

PROSPECTUS 2017



Agricultural Training Centre

CONTENTS





WELCOME 02

IS STUDY AT TARATAHI FOR ME? 04

TASTER COURSES 06

INTERNATIONAL STUDENTS 08

GRADUATE PROFILES 10

WHAT CAN I STUDY? 12

WHERE CAN I STUDY? 34

RESEARCH PROGRAMMES 39

FAQ'S 40

ENROLMENT & FEES 42





WELCOME

Nau Mai, Haere Mai

Thank you for requesting our 2017 Prospectus.

The primary sector is one of the world's most important industries, providing food and raw materials necessary for survival. Primary industries are a vital part of New Zealand's economy and way of life and are responsible for over 70 percent of our product exports. As New Zealand continues to grow its export markets around the world, demand for qualified people in the primary industries is correspondingly increasing. To stay competitive, our skill levels will need to increase over the next decade in order to realise economic and environmental goals.

The primary industries employ 350,000 people and account for one in six jobs nationally and in some regions one in three jobs. By 2025 the primary industries (defined broadly as including both primary production and related manufacturing and services) will need 92,600 more workers with qualifications. Even roles that have traditionally not required formal qualifications in the past will need greater skills*.

Taratahi Agricultural Training Centre has been successfully preparing students for careers in agriculture since 1919. Our mission is to build workforce skills in primary industries through quality education and the demonstration and dissemination of knowledge and skill. Each year, approximately 2,000 students learn with Taratahi to build and develop skills for the agricultural industry. Using the skills and knowledge gained at Taratahi, graduates have the opportunity to move into rich and rewarding careers in the primary sector.

Taratahi attracts students from all over New Zealand and around the world. Some of our students have grown up on a farm, but many of our students are from non-farming backgrounds. We make no distinction for acceptance. The main entry requirement is a passion for a successful career in agriculture. There is strong demand within the rural industry for Taratahi graduates with many finding work even before they graduate. Some of our graduates choose to continue their studies at Bachelor level at Massey or Lincoln universities, or through the Primary ITO.

We offer NZQA approved qualifications for the agricultural industry. Programmes are offered from Taratahi campuses around New Zealand, allowing students to choose learning options that suit their needs and interests within agriculture. Programmes are reviewed regularly to ensure training is relevant and meets the current needs of the primary sector.

Taratahi is unique in the world of agricultural training. With access to thousands of hectares of commercial farm land (owned, leased, managed or through access arrangements), all students learn in real life farming situations from the day they arrive on campus.

Students will gain real life agricultural experience under the direction of a respected team of tutors. Our carefully selected tutors are not only passionate about teaching, they are also specialists in their area of knowledge, dedicated to farming and agriculture. Students also participate in on-farm research and extension programmes that have been an area of considerable development over the past few years. This area of operations is entrenched with models of partnership and collaboration with other like-minded organisations, without which this progress could not be achieved.

When you choose to study at Taratahi you are making a solid investment in your future. You will gain critical industry knowledge while at the same time making lifelong friends and contacts.

Contact us to discuss our programmes and how we can personally help you get started in your chosen career!

The Taratahi team



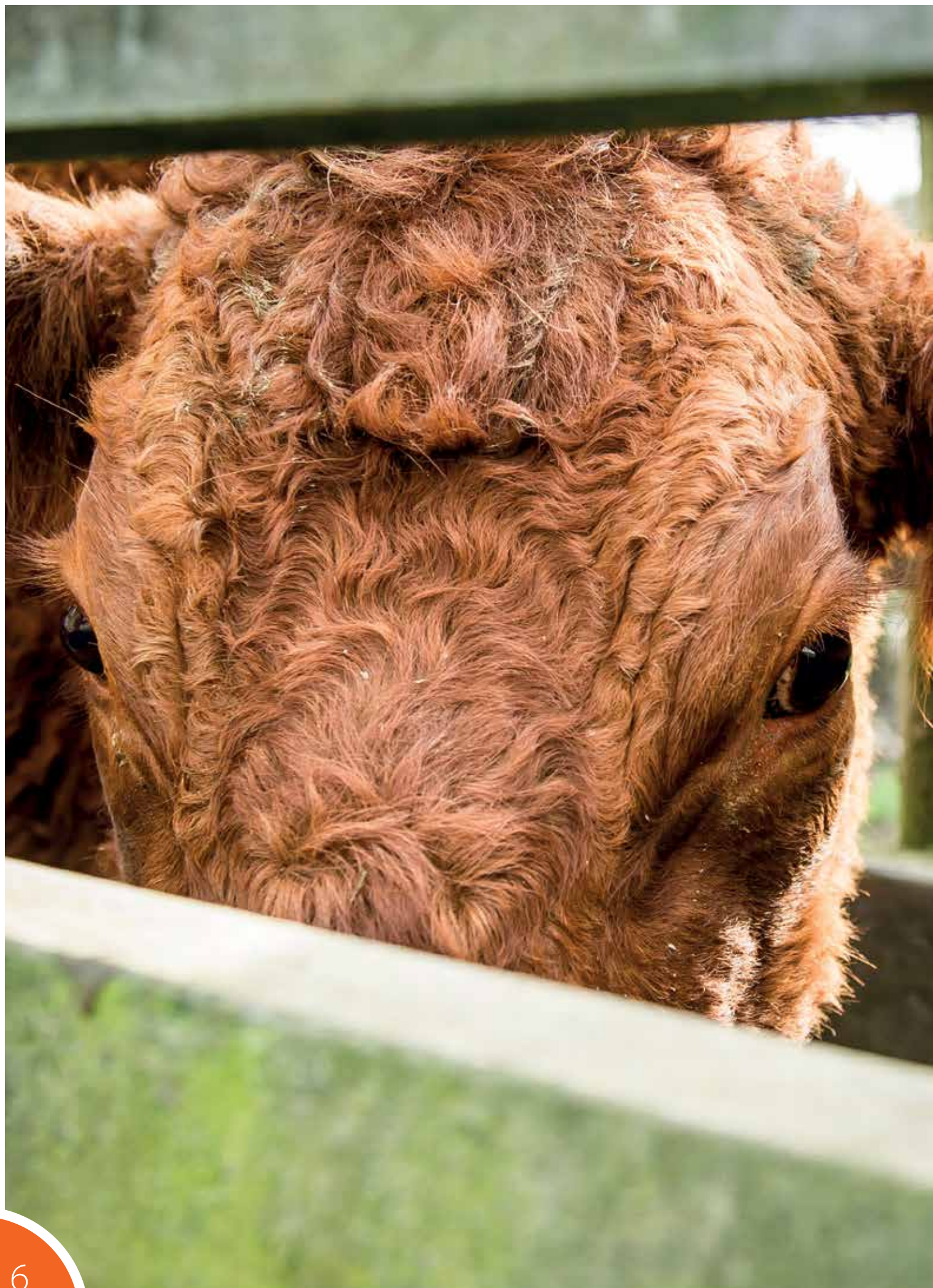
IS STUDY AT TARATAHI FOR ME?

Study at Taratahi may be for you if you are interested in:

- Raising and working with animals
- Working outdoors in a rural environment
- Driving tractors, motorbikes, and heavy machinery
- Doing physical work, and working with your hands
- Working with tools, machinery and equipment
- Business management in the primary industries
- Science and research in the primary industries

Study options start at foundation level and students have the option to learn with us up to management level qualifications. In addition to learning general farming skills, students can choose to stream into distinct career pathways:







TASTER COURSES

Tasters are a great way to discover what it's like to live and learn at Taratahi.

Wairarapa Tasters

The Wairarapa residential campus runs four-day Tasters (January, October and December), which are held in the school holidays. The application fee for the four day Tasters covers course fees, meals and accommodation. Students will be involved in a range of practical farming activities during the day and fun after-hours events in the evenings.

Regional Tasters

Some campuses run fees free one day Taster programmes where students get a chance to have a go at some of the more practical aspects of our agricultural programmes.

For 2017 regional Taster dates, you can email: info@taratahi.ac.nz or visit our website www.taratahi.ac.nz for more details.

INTERNATIONAL STUDENTS

Each year, Taratahi welcomes international students from all over the world including Asia, Europe, Latin America, the Middle East and Africa. Our international students take part in a number of different training programmes of various durations. These students add a special element to the atmosphere and culture at Taratahi and we greatly value their contribution.

Programmes open to international students are indicated by an International fee (in \$NZ).





GRADUATE PROFILES



JAMES AND TIA TAUTUKU
Assistant Manager



Graduated: 2015

Studied: Taratahi Certificate in General Farm Skills (Level 3)

James and Tia Tautuku were professional performing artists but both had their sights set on a career on the land.

"Studying the certificate programme has given me a much better understanding of what is involved in farm work. I have learned skills to give me confidence with chainsaws and farm machinery, agrichemicals and fencing. My wife Tia especially appreciated learning about soil types and how to manage the land."

DANIELLE SCOTT
Agribusiness Advisor BNZ



Graduated: 2013

Studied: Taratahi Sheep and Beef programme (level 3), National Certificate in Agriculture (level 4)

Danielle Scott has been accepted onto the BNZ's Rural banking graduate programme in Northland.

Danielle credits her time at Taratahi with laying a solid foundation for her career.

"Some people who go into Agribusiness don't really understand the practicalities of farm life but my time at Taratahi means I have a really good understanding of what farm life entails - not just the theory side of it."

SHAWN SANDS
Farm Manager & Contract Milker



Graduated: 2013

Studied: Taratahi Certificate in Agriculture (Level 3) and National Certificate in Agriculture (Dairy) (Level 4)

"Going to Taratahi has definitely helped me get to where I am today. It wasn't just about learning about dairy farming. We were also helped to set good work practices and develop our interpersonal and life skills. I have learned that these qualities are just as important to employers as technical skills."



TAANE HUBBARD
Shepherd General



Graduated: 2015

Studied: Taratahi Certificate in Agriculture (Level 3 and 4), Massey Diploma of Agriculture (Level 5) 2016

"I really enjoyed Taratahi because it really helps you to excel in whatever you want to study. My Taratahi experience helped me to become a finalist in the Ahuwhenua Young Maori Farmer of the Year 2015. I also made lots of friends and networks that no doubt helped me get to my job today as a Shepherd General on Tautane Station – Chur!"

HEMO KOPA
Junior Shepherd General



Graduated: 2015

Studied: Taratahi Certificate in Agriculture (Level 3 and 4), Massey Diploma of Agriculture (Level 5) 2016

"Taratahi gave me the opportunity to follow my passion to work in the agriculture industry, to create networks and make new mates. As a sheep and beef student there was always a variety of jobs. Taratahi helped me reach the finals of the Ahuwhenua Young Maori Farmer of the Year Award 2015, then that lead to my current job as junior shepherd general at Pukemiro Station with the ADB Williams Trust."

DUNCAN CAMPBELL
Assistant Manager, Dairy



Graduated: 2014

Studied: Massey University Diploma in Agriculture (Level 5)

In 2013, Duncan enrolled in the Massey University Diploma of Agriculture (Level 5) delivered by Taratahi.

Duncan believes that the Diploma is a great solution for people who have worked on-farm and don't want to study at degree level.

"The Diploma has been key in what I've achieved. It's made the difference between being someone who is able to do a job, and someone is able to add value to that job."

WHAT CAN I STUDY?





OPTIONS WHILE YOU ARE STILL AT SCHOOL

NCEA LEVEL 1,2, 3

PRIMARY INDUSTRIES IN SCHOOLS

DESCRIPTION

Primary Industries in Schools has been designed to provide senior secondary school students (Year 11 - 13) with the opportunity to build and develop skills through on-farm experiences while also gaining credits towards their NCEA Levels 1 - 3. Our programmes give students the unique opportunity of beginning their tertiary education in agriculture while still at secondary school.

All Primary Industries in Schools programmes options are government funded. They have a strong focus on practical, hands on training, while also completing nationally recognised units that contribute towards NCEA Level 1, 2, 3 and a Vocational Pathway Award in the Primary Industries.

Students can be involved in the Primary Industries in Schools programme in the following four ways:

- **Extramural** students study via correspondence using Taratahi learning resources and assessments
- **STAR** (Secondary Tertiary Alignment Resource) students study in short block courses at various times throughout year
- **PITA** (Primary Industries Trades Academy) students study Levels 1 and 2, part-time over a minimum of 33 weeks
- **STEP uP** (Secondary Tertiary Education/Employment Pathways – Primary) students study Level 3 part-time in various flexible delivery models



Programmes are delivered in the following regions; Northland, Auckland, Waikato, Bay of Plenty, Hawkes Bay, Taranaki, Manawatu, Wairarapa, South Otago, Southland.

EXTRAMURAL STUDY

Extramural theory papers on different aspects of the primary industry are available via distance learning with support from our tutors. Topics include farming, forestry, equine, apiculture, wool harvesting, horticulture. This study is available for Years 11 to 13 and offered nationwide.

STAR

Taratahi offers students in Year 11 to 13 the opportunity to participate in STAR courses. STAR courses focus on different aspects of the primary industry and are typically run as short blocks of three to five days each throughout the year, though this can be tailored to meet learner needs on a case by case basis. Topics include;

- Wool Harvesting
- Agri-Chemicals
- Agri-Vehicles
- Chainsaw Safety
- Dairy Farming
- Electric Fencing
- Sheep Handling
- Mechanical Engineering (Wairarapa only)
- Equine Focus (Wairarapa only)



PRIMARY INDUSTRIES TRADES ACADEMY (PITA)

The Primary Industries Trades Academy (PITA) programme is available to Year 11 and 12 students.

Our programme involves learning practical skills with our qualified industry tutors on selected farms, as well as gaining valuable industry and career advice. The PITA programme runs during terms 1-4, with practical delivery finishing in October, leaving November for students to focus on exams.

- New Zealand Certificate in Primary Industries Skills Level 2
- New Zealand Certificate in Equine Skills Level 2
- NCEA Level 1 and 2 including Level 1 Literacy and Numeracy requirements
- Vocational Pathway Award in Primary Industries

Schools may choose from two delivery models;

- 1-day model - One day a week on farm, theory and practical taught and delivered by Taratahi
- 2-day model - One day a week on farm, theory and practical taught and delivered by Taratahi, the second equivalent day

STEP uP (3+2)*

Taratahi offers senior secondary school students the opportunity to work towards a Level 3 Tertiary Qualification that will meet the needs of the primary industry. Unit standards from this programme will go towards helping the student achieve NCEA Level 3. Programme offerings include:

- New Zealand Certificate in Equine (Horses) Level 3
- New Zealand Certificate in Agriculture (Vehicles, Machinery and Infrastructure) Level 3

Various delivery models are available throughout School Term time and the School holidays including the following options;

- 1 day per week in Tertiary: 4 days per week in School
- 2 days per week in Tertiary: 3 days per week in School
- 3 days per week in Tertiary: 2 days per week in School
- 4 days per week in Tertiary: 1 day per week in School

ENROLMENT

Secondary school students need to enrol in these programmes through their school. Please speak to your careers advisor.

Careers advisors need to contact the Taratahi regional office closest to their school.

For further information, download a copy of the Primary Industries in Schools handbook from this page on our website:

<http://www.taratahi.ac.nz/programmes/primary-industries-in-schools>

Or contact us for a copy on pita@taratahi.ac.nz.



OPTIONS AFTER YOU LEAVE SCHOOL – LEVEL 1-3 FOUNDATION PROGRAMMES



FEES
FREE

NEW ZEALAND CERTIFICATE IN FOUNDATION SKILLS (Level 1) & NEW ZEALAND CERTIFICATE IN PRIMARY INDUSTRY SKILLS (Level 2)

DESCRIPTION

The Level 1 and 2 Foundation programme focuses on practical production based skills, with a mix of theory knowledge based learning, at the end of which students will be awarded the following;

- New Zealand Certificate in Foundation Skills (Level 1)
- NCEA Level 1 and 2
- New Zealand Certificate in Primary Industry Skills (Level 2)
- Vocational Pathway Award in Primary Industries

This programme is designed to prepare students for further training in the primary industries and include employability life skills vital for beginning a career. These include communication, teamwork, budgeting, time management, prioritising, presentation, initiative, and literacy and numeracy.

DURATION/START DATES

February, 32-40 (tba) week full-time programme, 4 days per week, rolling enrolments.

LOCATION

Northland, Auckland, Waikato, Bay of Plenty, Hawkes Bay, Taranaki, Manawatu, Wairarapa, Wellington, Southland.
Note: locations are subject to change.

FEES (\$NZ)

Domestic – Fees Free

ENTRY CRITERIA

Applicants must preferably not hold an existing Level 1 or Level 2 qualification.

PATHWAYS

This qualification provides graduates with the opportunity to be able to apply for a Level 3 programme of study, which can lead to entry-level positions on sheep and beef, or dairy farms.

JOB OPPORTUNITIES

Further study can lead to entry-level positions in the primary industry sector.



NEW ZEALAND CERTIFICATE IN PRIMARY INDUSTRY SKILLS (Level 2) – Stand alone

DESCRIPTION

This programme focuses on practical production based skills, with a mix of theory knowledge based learning. It is designed to prepare students for further training in the primary industries by providing foundational skills for the work and farm environment. These are skills considered vital when beginning a career in agriculture. Students will have the opportunity to implement, practice and improve their knowledge and skills on commercial farms in managed scenarios during their training.

DURATION/START DATES

12 weeks, full time, various start dates, 4 days per week.

LOCATION

Northland, Auckland, Waikato, Bay of Plenty, Hawkes Bay, Taranaki, Manawatu, Wairarapa, Wellington, Southland.

Note: locations are subject to change.

FEES (\$NZ)

Domestic - Fees Free

ENTRY CRITERIA

Applicant must not hold an existing Level 2 qualification.

PATHWAYS

This qualification provides graduates with the opportunity to be able to apply for a Level 3 programme of study, which can lead to entry-level positions on sheep and beef, or dairy farms.

JOB OPPORTUNITIES

Further study can lead to entry-level positions in the primary industry sector.

FEES
FREE



NEW ZEALAND CERTIFICATE IN AGRICULTURE (Vehicles, Machinery and Infrastructure) – Stand alone

DESCRIPTION

The purpose of this qualification is to provide rural workplaces with individuals who have the ability to safely carry out a range of activities for the efficient operation of a rural workplace, including the use and maintenance of workplace vehicles, machinery, and infrastructure.

Rural workplaces will benefit by having skilled staff who will be able to maintain and improve production through safe and efficient workplace practices.

Students will benefit by having a qualification within a training pathway that recognises progression through the industry, as well as increased skills and knowledge acquisition to enable improved job performance.

This qualification is for students from a wide range of rural workplaces, who want to further develop their skills and abilities across a range of non-specialised competencies, in order to contribute to the safe and efficient operation of a rural workplace.

DURATION/START DATES

12, 13 or 14 weeks, full-time, various start dates.

Note: duration and start dates are subject to change.

LOCATION

Northland, Auckland, Waikato, Hawkes Bay, Taranaki, Manawatu, Wairarapa, Southland. Note: locations are subject to change.

FEES (\$NZ)

Domestic - \$750.00

International - \$7,250.00

ENTRY CRITERIA

Applicants must be aged 16 years or over, and must also be physically able and strong enough to work safely around livestock and use machinery.

PATHWAYS

This programme may lead onto further training at Level 3 with strands in Milk Harvesting, Farming Systems and Livestock husbandry. Or onto the New Zealand Certificate in Agriculture (Level 4) with strands in Breeding Livestock, Non-breeding Livestock and Dairy Farming.

JOB OPPORTUNITIES

Graduates of this qualification are likely to be employed as a general hand, junior shepherd, farm assistant, or in other similar roles in rural based workplaces.

DAIRY FARMING AND EQUIPMENT Or SHEEP AND BEEF FARMING

DESCRIPTION

This programme is a combination of the New Zealand Certificate in Agriculture (Farming Systems) and the New Zealand Certificate in Agriculture (Vehicles, Machinery and Infrastructure). It introduces students to the broad theoretical concepts that underpin New Zealand's pastoral farming systems.

This programme will give students the knowledge and skills to operate vehicles, machinery and equipment safely and effectively; move, handle, treat, feed, and perform routine husbandry practices on livestock; an understanding of pasture-based livestock feeding and how this is managed to meet animal needs; and an understanding of how sustainable practices and technology can be used on-farm.

DURATION/START DATES

42 weeks (including 6 weeks holiday)

Programme runs: end of February to December

Note: duration and start dates are subject to change.

LOCATION

Northland, Auckland, Waikato, Hawkes Bay, Taranaki, Manawatu, Wairarapa, Southland. Note: locations are subject to change.

FEES (\$NZ)

Domestic - \$3,700.00

International - \$21,700.00

ENTRY CRITERIA

Applicants must be aged 16 years or over, and must also be physically able and strong enough to work safely around livestock and use machinery.

PATHWAYS

Graduates may wish to gain entry level positions on dairy farms or pursue further study through the New Zealand Certificate in Agriculture (Level 4). Alternatively, graduates could follow a management pathway by progressing to a Diploma in Agribusiness at Level 5.

JOB OPPORTUNITIES

Graduates of this qualification are likely to be employed as a general hand, junior shepherd, farm assistant or in other similar roles in rural based workplaces.



NEW ZEALAND CERTIFICATE IN AGRICULTURE (Farming Systems)*

DESCRIPTION

This programme introduces students to the broad theoretical concepts that underpin New Zealand's pastoral farming systems and the practical capabilities of the sector. The qualification has four main threads. The first is in understanding the key farming inputs for pastoral farming systems. These include soils, plants, pasture and livestock. The second is equipping students with the practical skills to assist with on-farm tasks to do with keeping livestock in good condition. The third concerns technology and sustainable practice. This involves looking at how technology is used within farms and how sustainable practice supports farm production and profitability. The final thread is health and safety, which is essential to all farming practices and ensuring the industry is safe to work within.

Study options/pathways include: Dairy or Drystock.

DURATION/START DATES

27 weeks, full-time (including 3 weeks holiday)

Programme runs: March to September – Drystock.

June to December – Dairy

Note: duration and start dates are subject to change.

LOCATION

Northland, Auckland, Waikato, Hawkes Bay, Taranaki, Manawatu, Wairarapa, Southland. Note: locations are subject to change.

FEES (\$NZ)

Domestic - \$2,950.00

International - \$14,450.00

ENTRY CRITERIA

Applicants must be aged 16 years or over and should be working towards a learner, restricted or full drivers licence. Applicants must also be physically able and strong enough to work safely around livestock and use machinery.

PATHWAYS

Students may wish to gain entry level positions on dairy farms or pursue further study through the New Zealand Certificate in Agriculture (Level 4). Alternatively, another option is to follow a management pathway by progressing to a Diploma in Agribusiness at Level 5.

JOB OPPORTUNITIES

Typical jobs after graduating includes milk harvester, dairy assistant and junior farm assistant.

NEW ZEALAND CERTIFICATE IN AGRICULTURE (Livestock Husbandry)*

DESCRIPTION

This programme introduces students to the key practices involved in livestock husbandry. It focuses on knowing the processes that occur from mating to birth and then rearing the young animal. It includes understanding animal anatomy, reproductive processes and cycles. The focus is on understanding that for a farm to be successful, there should be optimum numbers of conceptions and live births. Once the animals have been born, they must be kept in good condition by preventing, diagnosing and treating health problems to produce the best possible return for the farm.

Study options/pathways include: Dairy or Drystock.

DURATION/START DATES

22 weeks (including 2 weeks holiday)

Note: duration and start dates are subject to change.

LOCATION

Northland, Auckland, Waikato, Hawkes Bay, Taranaki, Manawatu, Wairarapa. Note: locations are subject to change.

FEES (\$NZ)

Domestic - \$2,950.00

International - \$13,450.00

ENTRY CRITERIA

Applicants must be aged 16 years or over and should be working towards a learner, restricted or full drivers licence. Applicants must also be physically able and strong enough to work safely around livestock and use machinery.

PATHWAYS

Graduates may wish to gain entry level positions on dry stock farms or pursue further study through the New Zealand Certificate in Agriculture (Level 4). Alternatively, another option is to follow a management pathway by progressing to a Diploma in Agribusiness at Level 5.

JOB OPPORTUNITIES

Typical jobs after graduating includes junior shepherd general, junior farm assistant, fencer's assistant, milk harvester or dairy assistant.

NEW ZEALAND CERTIFICATE IN AGRICULTURE (Milk Harvesting)* (international students only)

DESCRIPTION

This programme introduces students to the principles and skills required to harvest milk, maintain milk quality, assist with solving milk quality problems and assist with dairy effluent management.

It is about recognising the processes and techniques involved in collecting milk, assessing its quality and identifying the factors that make milk suitable, or unsuitable, for sale. It is critical that students achieve an understanding of milking shed equipment and how to keep this equipment clean, hygienic and in good condition. Integral to this qualification is an understanding of the need to keep dairy cows in good condition so their milk is of high quality and maximum production is achieved. Finally, the qualification looks at the management of dairy effluent.

DURATION/START DATES

22 weeks (including 2 weeks holiday)

Programme runs: July to December

Note: duration and start dates are subject to change.

LOCATION

Wairarapa. Note: locations are subject to change.

FEES (\$NZ)

Domestic - \$2,950.00

International - \$13,450.00

ENTRY CRITERIA

Applicants must be aged 18 years or over and meet the English language criteria on page 40. Applicants must also be physically able and strong enough to work safely around livestock and use machinery.

PATHWAYS

Graduates may want to pursue further study through the New Zealand Certificate in Agriculture (Level 4). Alternatively, another option is to follow a management pathway by progressing to a Diploma in Agribusiness at Level 5.

JOB OPPORTUNITIES

Graduates may wish to gain positions as full time milk harvesters or farm assistants on a dairy farm.

NEW ZEALAND CERTIFICATE IN AGRICULTURE (Pastoral Livestock Production)*

DESCRIPTION

This programme introduces students to the factors which influence the quality and quantity of pastoral livestock production. It focuses on the understanding that pastoral livestock and pasture are key inputs into a farm. Students will gain the knowledge to assess and maintain pasture quality at different life stages and seasons so effective decisions can be made to support optimum livestock nutrition. This qualification also looks at other factors that contribute to keeping livestock in optimum condition, such as keeping animals pest and disease free so financial returns are maximised.

Study options/pathways include: Dairy or Drystock.

DURATION/START DATES

12 weeks, full time.

Note: duration and start dates are subject to change.

LOCATION

Northland, Auckland, Waikato, Hawkes Bay, Taranaki, Manawatu, Wairarapa. Note: locations are subject to change.

FEES (\$NZ)

Domestic - \$750.00

International - \$4,750.00

ENTRY CRITERIA

Applicants must be aged 16 years or over and should be working towards a learner, restricted or full drivers licence.

Applicants must also be physically able and strong enough to work safely around livestock and use machinery.

PATHWAYS

Graduates may wish to pursue further study through the New Zealand Certificate in Agriculture (Level 4). Alternatively, graduates could follow a management pathway by progressing to a Diploma in Agribusiness at Level 5.

JOB OPPORTUNITIES

Graduates may wish to gain entry level positions on dry stock or dairy farms.

NEW ZEALAND CERTIFICATE IN AGRICULTURE (Farming and Pastoral Systems)*

DESCRIPTION

This programme introduces students to the broad theoretical concepts that underpin New Zealand's pastoral farming systems and the practical capabilities of the sector. It includes the factors that influence the quality and quantity of pastoral livestock production. The qualification looks at the key farming inputs for pastoral farming systems as they apply to the farming industry. These include soils, plants, pasture and livestock. It builds the understanding that livestock are key inputs into a farm, and for livestock to provide optimum returns, they must have good nutrition and be kept in good health. Nutrition comes from effective pasture management.

Students will gain the knowledge to assess and maintain pasture quality for livestock at different life stages and in each season. They will also be equipped with the practical skills to assist with on-farm tasks to keep livestock and pasture in good condition. In addition, students will look at how technology is used within farms and how sustainable practice supports farm production and profitability.

Study options/pathways include: Dairy or Drystock.

DURATION/START DATES

42 weeks (including six weeks holiday)

Programme runs: End of February to December

Note: duration and start dates are subject to change.

LOCATION

Northland, Auckland, Waikato, Hawkes Bay, Taranaki, Manawatu, Wairarapa. Note: locations are subject to change.

FEES (\$NZ)

Domestic - \$3,700.00

International - \$21,700.00

ENTRY CRITERIA

Applicants must be aged 16 years or over, and should be working towards or hold a learner, restricted or full drivers licence. Applicants must also be physically able and strong enough to work safely around livestock and use machinery.

Applicants must demonstrate they are competent to drive farm vehicles or have completed relevant unit standards.

Alternatively, applicants must demonstrate they have the equivalent skills and knowledge.

PATHWAYS

Graduates may wish to pursue further study through the New Zealand Certificate in Agriculture (Level 4). Alternatively, graduates could follow a management pathway by progressing to a Diploma in Agribusiness at Level 5.

JOB OPPORTUNITIES

Graduates may wish to gain entry level positions on dry stock or dairy farms.



NEW ZEALAND CERTIFICATE IN CROSSBRED WOOL HANDLING (Level 3) (with optional endorsement in Fine Wool)*

DESCRIPTION

The purpose of this qualification is to provide the wool harvesting industry with people who have gained the knowledge and practical skills to prepare and grade crossbred wool.

Students will benefit by having a qualification within a training pathway that recognises progression through the industry, as well as having increased skills and knowledge acquisition to enable improved job performance. Students may choose to specialise in fine wool handling on completion of the New Zealand Certificate in Crossbred Wool Handling by completing the optional endorsement in Fine Wool. This endorsement recognises the additional specialised skills and knowledge required to identify and remove faults when preparing fine wool.

The sheep farming, wool harvesting, and textile industries will benefit by having people with wool preparation and grading skills that will maximise financial returns at all stages of the wool growing and harvesting process.

DURATION/START DATES

TBA

LOCATION

Northland, Auckland, Waikato, Hawkes Bay, Taranaki, Manawatu, Wairarapa. Note: locations are subject to change.

FEES (\$NZ)

Domestic - \$1,000.00

International - \$7,250.00

ENTRY CRITERIA

Applicants must be aged 16 years or over, and must also be physically able and strong enough to work safely around livestock and use machinery.

PATHWAYS

This qualification can build on the Wool Handling strand of the New Zealand Certificate in Wool Harvesting (Level 2) with strands in Crutching, Wool Handling and Crutching and Shearing, which can lead on to the New Zealand Certificate in Wool Handling (Level 4).

JOB OPPORTUNITIES

Graduates of this certificate may be employed as a commercial wool handler in the wool harvesting industry.

NEW ZEALAND CERTIFICATE IN EQUINE SKILLS (Sporthorse Stable Assistant)*

DESCRIPTION

The purpose of this qualification is to provide the equine industry with individuals who have the skills and knowledge to assist in the stabling, care and/or exercise of horses in the performance horse sectors of the equine industry.

On completion of this programme, students will be able to attend to the routine day to day requirements of horses in training, apply skills and knowledge in the routine identification, reporting, and treatment of problems of horses in training and respond appropriately to emergencies involving horses.

This programme focuses on Sporthorses so learners will be able to apply routine procedures when exercising and training horses for a sport horse discipline and conduct the routine preparation of a horse for an event and attend to horses' and riders' requirements at the event.

Students complete theory and practical training most days in addition to handling and riding a range of horses.

DURATION/START DATES

14 weeks

February and September

LOCATION

Wairarapa

FEES (\$NZ)

Domestic - \$2,300.00

International - \$8,750.00

ENTRY CRITERIA

Applicants must be aged 16 years or over and should have had some experience or contact with horses. You need to have handled horses and be able to rise to the trot.

PATHWAYS

New Zealand Certificate in Equine Skills (Sporthorse Groom) Level 4.

JOB OPPORTUNITIES

Employment - working under supervision in a team as a groom, stable hand or trekking guide.



LEVEL 3



NEW ZEALAND CERTIFICATE IN SHEARING (Crossbred/fine)*

DESCRIPTION

The purpose of this qualification is to provide the wool harvesting industry with people who have gained the knowledge and practical skills to shear sheep that have limited variation in wool characteristics. To achieve this certificate, graduates must be able to carry out shearing tasks relevant to one of the following contexts to meet the outcomes: blade shear, machine shear crossbred wool or machine shear fine wool.

Students/graduates will benefit by having a qualification within a training pathway that recognises progression through the industry, as well as increased skills and knowledge acquisition to enable improved job performance and increased remuneration. Graduates will be capable of working under limited supervision.

DURATION/START DATES

TBA

LOCATION

Northland, Auckland, Waikato, Hawkes Bay, Taranaki, Manawatu, Wairarapa. Note: locations are subject to change.

FEES (\$NZ)

Domestic - \$2,950.00

International - \$17,450.00

ENTRY CRITERIA

Applicants must be aged 16 years or over, and must also be physically able and strong enough to work safely around livestock and use machinery.

PATHWAYS

This qualification builds on the Crutching and Shearing strand of the New Zealand Certificate in Wool Harvesting (Level 2) with strands in Crutching, Wool Handling and Crutching and Shearing. It can lead to the New Zealand Certificate in Shearing (Blade/Crossbred/Fine) (Level 4).

JOB OPPORTUNITIES

Graduates will have the skills and knowledge to be employed as full-time commercial shearers in the wool harvesting industry.

NEW ZEALAND CERTIFICATE IN APICULTURE

DESCRIPTION

This programme is ideal for existing beekeepers wishing to obtain a qualification. The New Zealand Certificate in Apiculture provides students with no previous experience in beekeeping entry level skills and knowledge needed to help obtain a junior position in the beekeeping industry.

Modules include subjects such as how to construct and repair beehives, seasonal management of bees and the hives, requeening the hives, identification and treatment of diseases, shifting beehives and honey extraction.

DURATION/START DATES

One year, part-time (34 weeks) (taught in seasonally based modules over 14 workshops).

LOCATION

Northland, Auckland, Waikato, Bay of Plenty, Hawkes Bay, Taranaki, Manawatu, Wairarapa, Wellington, Southland, Christchurch, Cromwell, Nelson, Dunedin.

FEES (\$NZ)

Domestic - \$1,224.00

International - N/A

ENTRY CRITERIA

No formal academic qualifications necessary. You must be a New Zealand citizen or permanent resident, over 16 years old and show an interest in the beekeeping industry.

JOB OPPORTUNITIES

Junior beekeeping position.

LEVEL 4

NEW ZEALAND CERTIFICATE IN EQUINE SKILLS (Sporthorse Groom)

DESCRIPTION

The purpose of this programme is to provide the equine industry with individuals who have the skills and knowledge to manage the care, exercise and training of horses in the sporthorse sector of the equine industry.

Students will learn specific skills and services that have been endorsed by the industry. This will allow them to work more effectively in an equine workplace. The skills, which are backed by a knowledge base, technical training and commercial proficiency, are delivered with soft skills and health and safety wrapped around them.

This programme allows students to learn on a "real, commercial on-yard" location. Practice and enhancement of the skills is integrated into the day-to-day jobs that occur on the yard - which will give the training context, substance and value.

As students learn to assess, monitor and manage the day-to-day work on a yard and the care of the horses, they will have the opportunity to complete solo work firstly on the training yard and then on a work placement.

DURATION/START DATES

31 weeks (which includes 4 weeks placement)

Programme runs: mid-February to mid-October

LOCATION

Wairarapa

FEES (\$NZ)

Domestic - \$4,600.00

International - \$17,500.00

ENTRY CRITERIA

Applicants must be aged 16 years or over and should have had some experience or contact with horses. They need to have handled horses and be able to rise to the trot.

PATHWAYS

This Level 4 programme is 31 weeks. Students are able to exit at 14 weeks and gain the New Zealand Certificate in Equine Skills (Level 3) Sporthorse Stable Assistant.

Students who have completed the Level 3 programme prior may start the programme in the 15th week.

JOB OPPORTUNITIES

Employment either in a team or in a solo position as a senior groom, stable hand or trekking guide. This programme also offers foundation skills that are related to a range of other riding and equine related jobs where handling and understanding the horse is required.







DRYSTOCK BREEDING FARMING Or DAIRY FARMING

DESCRIPTION

This programme introduces students to the responsibilities involved in managing and overseeing the day-to-day operations of a farming system. Students learn about farm performance, how to identify the performance of their farm and compare this performance to others in the industry. Part of this is financial planning and producing management reports that provide information on the day-to-day activities and livestock production of the farm.

Alongside this, is an emphasis on planning, with the development of breeding, nutrition, feeding and production plans and considerations around maintaining and replacing farm equipment and vehicles. In addition, students consider the environmental impacts of their farming activities and ways to mediate this impact. On the practical side, students implement their feeding, nutrition, health and production plans, as well as perform maintenance and repairs on farm equipment and vehicles. They engage in the practical activities of running the farm and dealing with any issues around meat, wool or velvet production, quality or animal health/behaviour.

DURATION/START DATES

One year (41 weeks, including 5 weeks holiday), Full-time
Programme start date: February
Note: duration and start dates are subject to change.

LOCATION

Northland, Auckland, Waikato, Hawkes Bay, Taranaki, Manawatu, Wairarapa. Note: locations are subject to change.

FEES (\$NZ)

Domestic - \$3,399.00
International - \$18,450.00

ENTRY CRITERIA

Prior to acceptance to this programme students should have:

- completed a major course of study with Taratahi or equivalent study (in most cases a level 3, one year programme); or
- a high level of agricultural knowledge and work experience (at least two years' industry experience).

Selection of students is considered on a case-by-case basis. Students are normally required to complete industry experience before they are awarded this qualification.

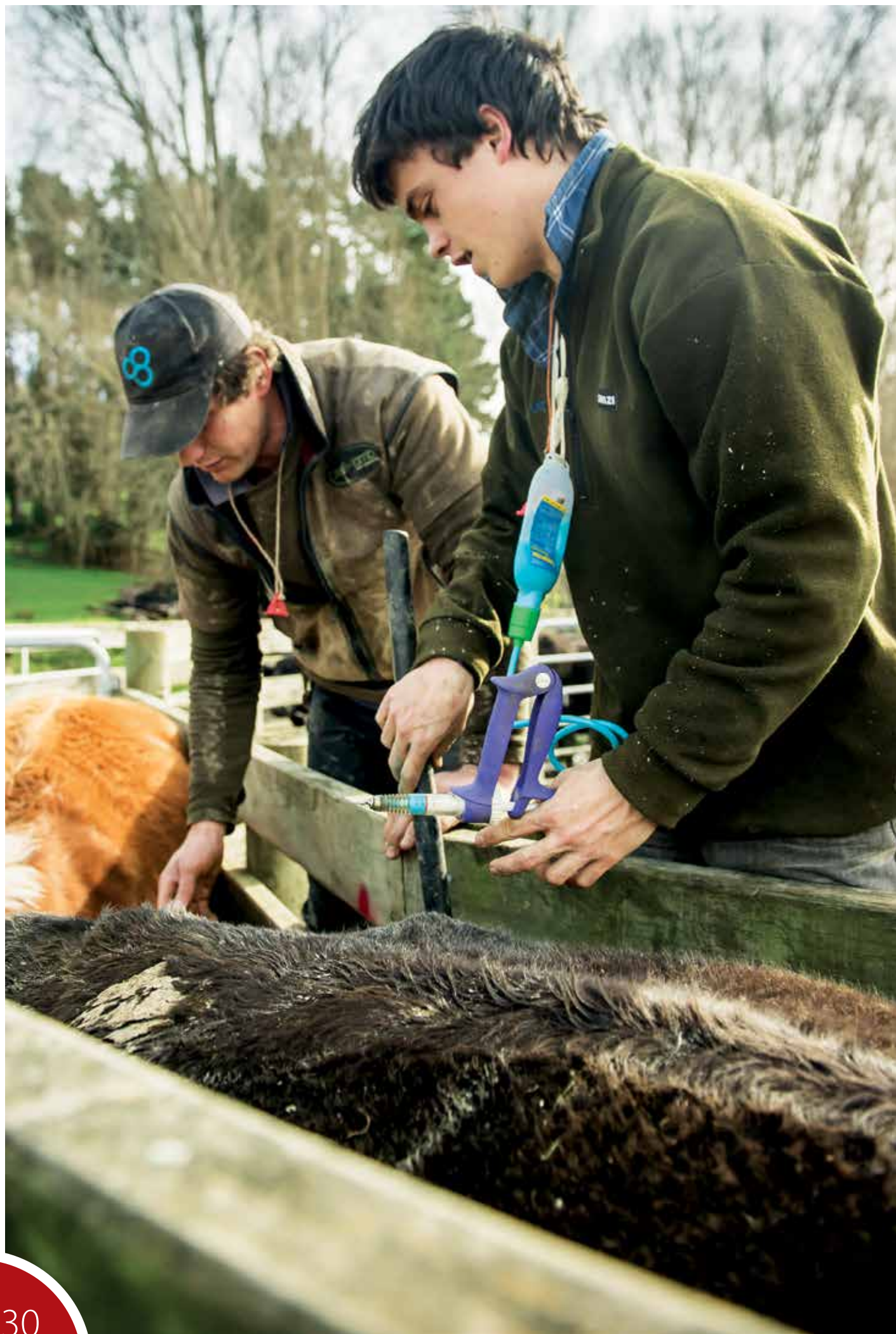
PATHWAYS

Upon completion of this qualification graduates could follow a management pathway by progressing to a Diploma in Agribusiness at Level 5.

JOB OPPORTUNITIES

Level 4 study can allow graduates to advance quickly to jobs with more responsibility such as assistant manager, head shepherd, or other farm management positions.





MASSEY UNIVERSITY DIPLOMA IN AGRICULTURE

DESCRIPTION

This diploma is available full-time and is ideal for students who want to further their knowledge and agriculture career. This programme offers a pathway to either degree level study or management opportunities. In addition, it allows students to take advantage of new technological developments and farming ventures.

The diploma in agriculture has eight papers that are designed to provide students with knowledge and appreciation of pasture and crop production and management; animal production, health and management; soil management; farm engineering and mechanisation; financial; business and marketing management; communication skills and personnel management. This is done through an integration of practical training with theoretical knowledge, and presentation of reports based on farm operations.

DURATION/START DATES

32 weeks – Semester 1
Programme start dates: February and July

LOCATION

Wairarapa (Residential or non-residential).

FEES (\$NZ)

Domestic – \$5,463.00
International – \$18,450.00

ENTRY CRITERIA

You are qualified for the admission to the Massey University Diploma in Agriculture programme if you have:

- met the NCEA Level 3 university entrance standard, the specifications of which are on the Massey University website; or
- successfully completed a National Certificate in Agriculture Level 4; or
- successfully completed a Massey University Foundation Certificate in Agriculture at Taratahi*
- a minimum of 12 months' farm practical experience
- an IELTS test score of 5.5 with a band score no lower than 5

*enquire with us about the Foundation Certificate in Agriculture.

Applicants must be 20 years or older.

PATHWAYS

At the conclusion of the Diploma, students are well placed to contribute positively to land-based employment or to proceed to study at Bachelor's level. There is also the potential to cross credit to other Massey qualifications.

JOB OPPORTUNITIES

Depending on the amount of prior work experience typical job opportunities after graduation include assistant manager, stock manager, farm manager, head shepherd, sharemilker, fertiliser rep or sales rep.

LINCOLN UNIVERSITY DIPLOMA IN AGRICULTURE*

DESCRIPTION

This diploma is available on a part-time basis and is ideal for students wanting to obtain more advanced qualifications while working. The diploma in agriculture covers eight papers in: soil management, plant husbandry, plant and animal health, livestock production systems, farm management, engineering, computing and communication.

The diploma is offered over two 12-week semesters each year. Students take two papers each semester, taking two years to complete the qualification. Students are required to attend class one afternoon a week. See www.lincoln.ac.nz/regionaldiploma for further details.

DURATION/START DATES

Two years, part-time – Semester 1 and 2

LOCATION

Wairarapa

FEES (\$NZ)

Domestic – \$6,720.00
International – \$26,000.00

ENTRY CRITERIA

You are qualified for the admission to the Lincoln University Regional Diploma in Agriculture programme if you:

- have a New Zealand University Entrance Qualification; or
- have achieved 40 credits at NCEA Level 2 across four of the subjects recognised by Lincoln University for entry into these diplomas. You must also meet the literacy and numeracy requirements for University Entrance; or
- are over 20 years old and a New Zealand citizen or permanent resident, applying through Special Admission provisions; or
- have successfully completed an approved qualification at NZQA Level 4 or above, e.g. the National Certificate in Agriculture (Level 4).
- 6.0 overall band score, with no individual component less than 5.5

PATHWAYS

At the conclusion of the Diploma, students are well placed to contribute positively to land-based employment or to proceed to study at Bachelor's level.

JOB OPPORTUNITIES

Depending on the amount of prior work experience typical job opportunities after graduation could include assistant manager, stock manager, farm manager, head shepherd, sharemilker, fertiliser rep or sales rep.

NEW ZEALAND DIPLOMA IN AGRIBUSINESS MANAGEMENT

DESCRIPTION

This programme is targeted at people who are in a management capacity in an agribusiness, or who have some industry or other relevant experience and are ready to advance into a management position within an agribusiness.

The purpose of this programme is to increase the skill level of individuals within the agribusiness sector who have the knowledge and skills to manage a wide range of agribusiness operations.

Students who complete this programme will come out with recognised agribusiness management skills and knowledge to enable improved job performance and enhance employment opportunities.

DURATION/START DATES

Two years, part-time – Semester 1 and 2

LOCATION

Wairarapa

FEES (\$NZ)

Domestic - \$3,577.50 or \$22.50 per credit

International - N/A

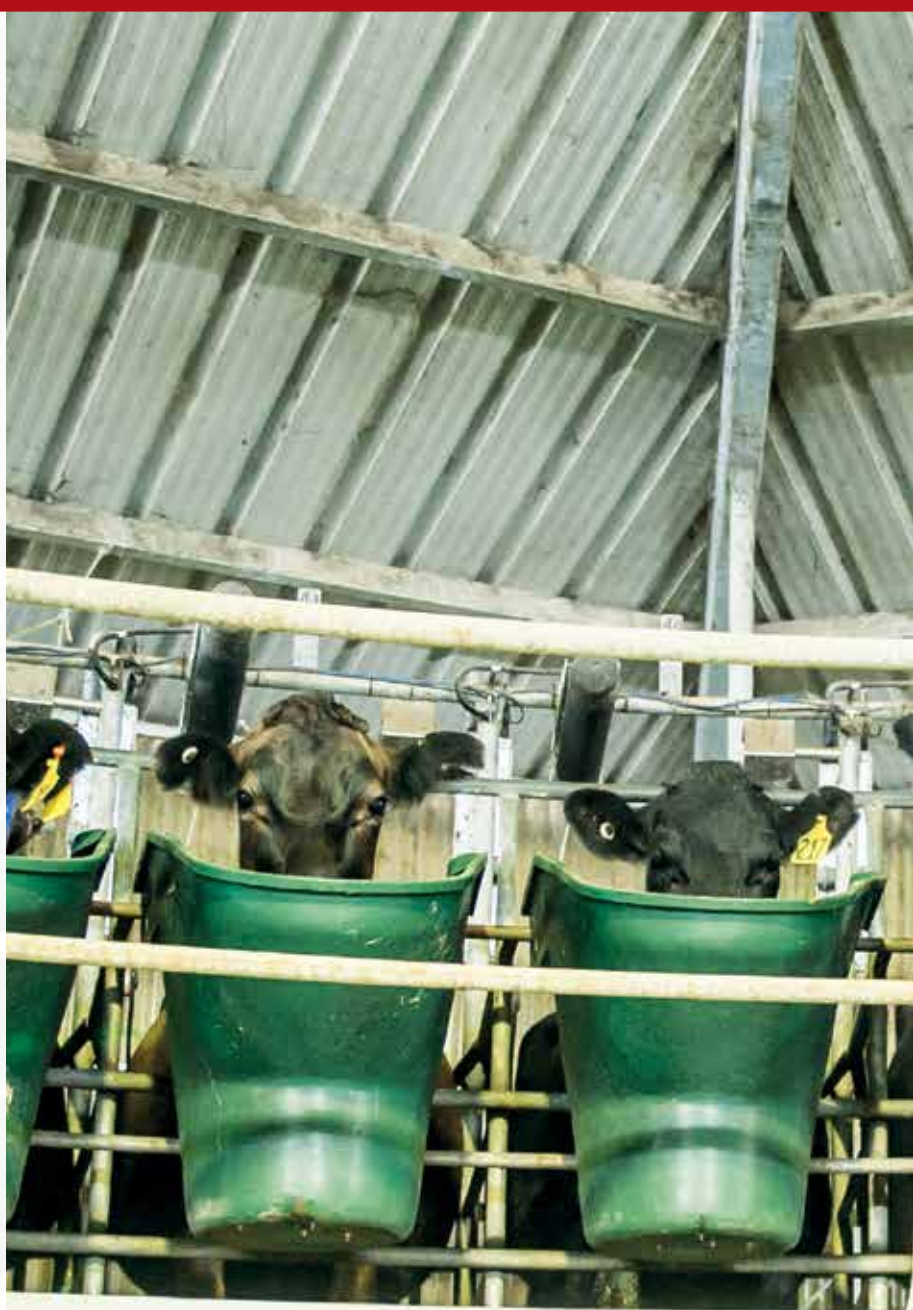
ENTRY CRITERIA

Applicants need 2-3 years' industry experience and have a passion and motivation to work in the agribusiness sector. Applicants entering into this programme should be in a position to access financial and production performance information about a specific agribusiness.

GRADUATE PROFILE

Graduates of this programme will be able to:

- Compile and integrate whole business information about an agribusiness to critically analyse performance and identify opportunities for improvement
- Manage the financial requirements of an agribusiness
- Manage staffing requirements in an agribusiness
- Manage natural and/or physical resources for agribusiness sustainability.



LEVEL 5 DIPLOMAS

CENTRAL NORTH ISLAND DAIRY ACADEMY

DESCRIPTION

The Central North Island Dairy Academy will offer an intensive 32 week residential programme combining theory, practical training and on-farm experience based around the Massey University Diploma in Agriculture Level 5. The aim of this programmes is to develop graduates who possess technical, managerial and leadership skills.

The diploma in agriculture has eight papers that are designed to provide learners with knowledge and appreciation of pasture and crop production and management; animal production, health and management; soil management; farm engineering and mechanisation; financial; business and marketing management; communication skills and personnel management. This is done through an integration of practical training with theoretical knowledge and presentation of reports based on farm operations.

Intakes are limited to only ten students per year, and is at no cost to the student. Students are selected through an application process. The Dairy Academy will operate on the Ariki Dairy Unit, owned by Pengxin in the Wairakei District near Taupo. Students will live in housing on nearby Landcorp or Shanghai Pengxin farms and combine classroom study with practical application of learning on the Ariki dairy farm. Students will be encouraged to gain casual employment with Landcorp on its nearby dairy farms, primarily in study breaks.

LANDCORP
NEW ZEALAND



DURATION/START DATES

32 weeks, full-time – Semester 1
February 2017

LOCATION

Central North Island Dairy Academy, Taupo

FEES (\$NZ)

Domestic - Fees Free

ENTRY CRITERIA

You are qualified for the admission to the Massey University Diploma in Agriculture programme if you have:

- Met the NCEA Level 3 university entrance standard, the specifications of which are on the Massey University website; or
- Successfully completed a National Certificate in Agriculture Level 4; or
- Successfully completed a Massey University Foundation Certificate in Agriculture at Taratahi*
- A minimum of 12 months' farm practical experience

*enquire with us about the Foundation Certificate in Agriculture.

Applicants must be 20 years or older.

Only domestic students are eligible for this programme.

JOB OPPORTUNITIES

Herd manager, assistant manager. farm manager.

WHERE CAN I STUDY?



NORTHLAND

Non-residential

AUCKLAND

Non-residential

WAIKATO / BAY OF PLENTY

Non-residential

TARANAKI

Non-residential

HAWKE'S BAY

Non-residential in
partnership with EIT



MANAWATU

Non-residential

WAIRARAPA

Residential campus /
Head Office

SOUTHLAND

Non-residential

WHERE WE FARM AND TEACH

The following farms are owned, leased or managed by Taratahi. In addition to these farms, we also have access arrangements with many other commercial farms around the country to provide students with learning opportunities.

DAIRY

Wairarapa Dairy Unit, Masterton

Taratahi's 225ha dairy unit is situated on our main Wairarapa Campus. The dairy unit milks around 560 cows through a 46 aside herringbone shed and also rears replacement heifers through to weaning in a modern calf rearing operation.

Pukewhai, Wairarapa

This farm is situated within ten minutes of Pahiatua. Taratahi's educational activities are integrated into the farm operations on a regular basis. The farm comprises of 163ha effective milking platform. Taratahi targets to peak milk 445 cows for the 2016/2017 season.

Waimate West Demonstration Farm, South Taranaki

Set up in 1917 to illustrate good farming techniques, the Waimate West Demonstration Farm (WWDF) continues to operate with the same purpose today. The 34ha Demonstration Farm, managed by Taratahi, milks 130 cows through a 16 aside herringbone shed. Waimate West hosts research trials, such as nitrogen, cropping and once a day milking. Since 2012 it has also supported agricultural education for Taratahi's South Taranaki students.

Stratford Demonstration Farm, Taranaki

Stratford Demonstration Farm was purchased in 1917 by local farmers to establish and operate a model dairy farm to develop and promote improved farming methods. As an Incorporated Society, general farm policy was formulated by a committee of local farmers and agricultural consultants. The farm is run as two herds in a systems farmlet trial, under the control of a consultant.

The 54ha farm runs 170 jersey cows in two milking herds using a 20 aside Herringbone Shed. Performance is measured using the two milk silos for supply to factory.

SHEEP AND BEEF

Tautane Station, Hawkes Bay

Tautane Station is owned by Ngāti Kahungunu Limited and is located on the East Coast in Hawke's Bay, close to Herbertville and approximately 50 minutes from Dannevirke. The farm stretches across a picturesque 12km of coastline which includes the well-known Cape Turn Again.

Tautane is leased by Taratahi, totals 3,375ha and carries 30,000 sheep and beef stock units. Its primary focus is breeding yet we also finish up to 8,000 lambs each year. Tautane featured on Country Calander in August 2016, highlighting learning on the land for our Taratahi sheep and beef students. Tautane hosts Taratahi students for work experience which sees the students staying on farm for up to two weeks at a time.

Mangarata, Wairarapa

Mangarata is a 518ha breeding and semi finishing farm situated five minutes northeast of Masterton. Comprising of a mix of flat, rolling and medium hill country, the range of topography allows for a broad range of learner experiences. Mangarata runs 4,500 stock units and has a maternal breeding system in place focusing on fecundity and weaning weights. In combination with the sheep flock, Mangarata runs a beef cow operation, where all yearling heifers are mated.

Glenside, Wairarapa

Glenside winters over 7,700 stock units on 880ha. It is the amalgamation of two properties (Glenside and Arahura) and is located in Gladstone, 20km south east of Masterton. Glenside farms sheep, beef and deer, with approximately 4,000 ewes and two-tooths, 200 beef cows and 350 mixed age breeding hinds (plus various replacements). Glenside offers a variety of stock work and general farm duties opportunities.

Ballantrae – Manawatu

Taratahi took on the lease of Ballantrae in March 2016. The farm is situated at the bottom of the Saddle road about 5km from Woodville. It is medium to steep summer safe hill country and is 470ha total with 300ha effective. Ballantrae is running 3000 stock units which is made up of 2000 terminal ewes and 900 trading cattle. Ballantrae has also been a part of a long standing fertiliser trial with AgResearch. Taratahi students who study at in Manawatu will use Ballantrae as their base for farm and practical experience.

ADB Williams Trust, Dannevirke

ADB Williams Trust is a 1321ha effective operation with the main farm located at Otope 12km south-east of Dannevirke. It is supported by a 381ha effective summer-safe block located at Coonoor 30-minutes south-east of Otope. The Trust has a mandate to support charitable purposes and in particular training and education for people in agriculture. The Trust formed a relationship with Taratahi, and the Otope base unit hosts an accommodation and training facility for Taratahi students. Pukemiro Station (940ha effective) comprises of 580ha medium hill country, 205ha flat and 155ha rolling hill.

The farm is typically summer dry. Stock at Pukemiro includes 5,300 ewes, 2,000 winter trade lambs, 145 Hereford Friesian cross MA cows, 47 R2 in calf heifers, 100 R2 Friesian Bulls, 135 R1MS finishing cattle and 100 carry-over dairy cows. Coonoor is medium to steep limestone hill country running just over 3,000 stock units, carrying predominately replacement ewe hoggets. Beef breeding cows are used to help maintain pasture quality.

Hawke's Bay Campus Farmland

The Hawke's Bay Campus amalgamates three blocks within Hawke's Bay totalling 150ha, providing students with a variety of farming topography and stock requirements. A number of local owners in the Hawke's Bay allow access to their farms, with students undertaking roles on these farms that increases their knowledge and skills in a working environment.

These blocks are:

Puketapu Farm, Hawke's Bay: Located 15 minutes from campus this 70ha lease block is used as a fattening farm for cattle. The farm carries approximately 150 R1 replacement heifers and steers that come from Tautane Station, targeting them for sale by the following autumn.

Otatara Farm, Hawke's Bay: On this 55ha block, students establish basic skills in fencing, agri-vehicles, chainsaws and stock handling on this farm due to it being located right on campus. The farm encompasses a woolshed and yards enabling students to develop their stock handling and animal health knowledge. The land is used to carry breeding ewes with the offspring farmed for sale.

Heipipi Farm, Hawke's Bay: Situated ten minutes north of Napier, this 25ha block carries 150 breeding ewes managed similarly to the Otatara block. This land is used as a run-off block for stock during summer when other farms dry off. Sheep and cattle yards provide facilities for stock handling and loading out of stock when sold.





FACILITIES - RESIDENTIAL CAMPUS

A full-time Student Wellbeing and Residential Manager lives on our Wairarapa campus and two Residential Supervisors manage the campus during the evenings and weekends.

Taratahi has created a friendly atmosphere, helping make students' time at Taratahi an experience to remember.

The Wairarapa Campus has a swimming pool, computer room, gymnasium and a common room with pool table and Sky TV.

Taratahi provides three nutritious meals a day, seven days a week for all first year residential students. Staff cater for hearty, rural appetites as well as most individual dietary requirements.

All first-year students have their own room with a bed, desk, storage and heater. Level 4 and Level 5 students live in shared houses on campus.

ADDITIONAL ACTIVITIES

We work hard to make the campus a 'home away from home' and put on a variety of activities for our students in the evenings and during weekends. Some of these activities include:

- Regular sport nights
- Regular quiz nights
- Student vs. staff sporting competitions
- Tutors will often take out small groups of students to go hunting in the Wairarapa bush (we also organise gun licences for students)
- Regular excursions to Wellington and local events and attractions.

PASTORAL CARE

Taratahi seeks to not only develop an individual's skill level while on campus, but help students to develop important life skills. Some of the ways we do this include:

- Driving lessons in a vehicle purchased by the Student Council, to encourage students to gain their drivers licence.
- The chance to participate in major annual events in the agricultural calendar, eg. Golden Shears, Hoof & Hook Competition and the Ahūwhenua Young Māori Farmer Awards – aimed at developing Māori farming leaders of the future.
- Transport to weekend sports for students who are playing or supporting friends.

STUDENT COUNCIL

The Student Council is an important part of life at Taratahi.

The Council members are elected by the students. They meet every fortnight and tackle issues relating to campus life. The meetings are minuted and committee members take positions such as Chairperson, Secretary and Treasurer.

Our students learn how to organise themselves and run a committee. They develop the self-confidence to 'step-up' when required.

RESEARCH PROGRAMMES

Beef + Lamb New Zealand Genetics - Sheep Central Progeny Test Project

The central progeny test project was instigated to ask the following questions: "Do high performance rams perform well in different environments?" and "do top performing rams on the flat still perform well on harder hill country?"

Starting in 2013, Taratahi's previous lease farm Koromiko in the Wairarapa had been involved in an artificial insemination programme. It has now been moved to Taratahi's Mangarata farm also in the Wairarapa to measure and record the results from 15 dual purpose sires across 800 ewes. The farm measures and records ewe scanning, number of lambs born, ewe condition, lamb weaning weights and sex, DNA sampling of lambs and yield grade and health status. Mangarata is one of five farms around New Zealand engaged in this trial work and only one of two hill country sites.

Ewe Longevity trial – Massey University

The trial started in 2015 and is based on Taratahi's Mangarata Farm in the Wairarapa.

The ewe longevity trial is looking at the influences of pregnancy diagnosis, birth rank, weight and body condition score at different ages, has on the length of time a ewe stays in the breeding flock.

Beef + Lamb New Zealand Genetics - Beef Central Progeny Test

Beef + Lamb New Zealand Genetics has launched a beef progeny test, which will show how bulls of different types perform under comparable commercial conditions. The test involves about 2,200 cows and heifers and is being run over two years, across five large properties – one of these is Tautane Station. It is hoped that the trial will establish sound genetic linkages between large numbers of stud beef flocks to aid beef breeders to make more informed decisions around which bulls to purchase and who from.

Ravensdown, AgResearch, Massey University & MPI's Primary Growth Partnership - Remote Soil Scanning and Variable Rate Aerial Fertiliser Application

For the next seven years, Tautane Station will host Ravensdown, AgResearch and Massey University in the development of a more comprehensive method of assessing soil nutrient status on hill country farms. The programme aims to optimise fertiliser application to New Zealand hill country through improving existing differential application capability in aircraft - and developing a decision support system which will use remote sensing technology to target fertiliser application where it will produce the most benefit.

FarmIQ Systems Ltd - IQ Farms

Mangarata is one of eleven commercially operated farms located throughout the country that have been contracted to work with FarmIQ. The IQ Farms have been an important reference for the development of the FarmIQ System, helping FarmIQ work towards its aim of creating better information flows across the red meat industry.

DairyNZ - Farmwatch

DairyNZ Farmwatch is a weekly summary of the on-farm situation observed throughout New Zealand. This information is published in regional newspapers and online. Taratahi's Dairy Unit contributes information relating to its dairy farms to this report. Information in the Farmwatch allows other farmers around the country see what is happening in the region, and use the information as a benchmark to make decisions for their farms. Information includes soil temperature, rainfall, pasture cover, pasture growth rates, cow condition and milk production.

Farm trials – Stratford Dairy Farms

Taratahi manages two demonstration farms in Taranaki (Waimate West Demonstration Farm (WWDF) and Stratford Demonstration Farm (SDF)). The farms were established to support regional on-farm initiatives and research to improve productivity, resource use efficiency, sustainability and profitability.

Current research trials on the WWDF have included demonstrating the use of new pasture cultivars in improving dairy farm production and profit. An additional trial includes integrating high yield crops to evaluate how much additional dry matter can be generated and the systems required to convert this sustainably into extra milk solids production and profit. This trial is funded by the Sustainable Farming Fund, DairyNZ and other regional sponsors.



I don't have any farming experience. Can I still apply for a programme?

Yes, give us a call. What we are looking for is someone who is passionate and motivated about a career in agriculture whether they have lots of experience or none at all.

If you are aged between 16 - 18, we also suggest you attend one of our Taster courses so that you can be sure of your decision. Attending a Taster course will also help us recommend the right programme for you.

Do you provide accommodation at all campuses?

There is some accommodation at some of Taratahi's campuses. The only fully residential option is at Taratahi's Wairarapa Campus. The campus is ten minutes from Masterton, Wairarapa's main town.

Do I need a driver's licence?

It is preferable to have at least your restricted licence. Encouragement will be given to those who don't have a licence to complete this (at their cost) with a recognised driving instructor.

Does Taratahi cater for students with reading or writing difficulties?

Yes. All students are tested when they begin their programme of study. Literacy and numeracy is embedded into their everyday work. Tutors are available during the evenings and will help students who struggle with reading and writing (Wairarapa only). Some assessments can be done verbally and others with a reader/writer.

How do I pay my fees?

Taratahi offers various payment options at enrolment. These are fully discussed when you apply and include payment in full, or instalments by automatic payment.

Are there any scholarships to help pay for my fees?

Please see page 44 for more information about scholarships or visit www.taratahi.ac.nz.

What level of English do I need to be able to study as an international student?

ENGLISH PROFICIENCY OUTCOMES

PROGRAMMES		
Level 3	Level 4	Level 5
IELTS TEST		
General or Academic score of 5 with no band score lower than 5	General or Academic score of 5.5 with no band score lower than 5	Academic score of 5.5 with no band score lower than 5
TOEFL PAPER-BASED TEST (PBT)		
Score of 500 (with an essay score of 4 TWE)	Score of 530 (with an essay score of 4.5 TWE)	Score of 550 (with an essay score of 5 TWE)
TOEFL INTERNET-BASED TEST (IBT)		
Score of 35 (with a writing score of 20)	Score of 46 (with a writing score of 20)	Score of 46 (with a writing score of 20)
UNIVERSITY OF CAMBRIDGE ENGLISH EXAMINATIONS		
FCE or FCE for Schools with a score of 154. No less than 154 in each skill	FCE or FCE for schools with a score of 162. No less than 154 in each skill	FCE or FCE for schools with a score of 162. No less than 154 in each skill
NZCEL		
Level 3 with an endorsement of either General, Workplace, or Academic	Level 3 with an endorsement of either General, Workplace, or Academic	Level 4 with the Academic endorsement
PEARSON TEST OF ENGLISH (ACADEMIC)		
PToE (Academic) score of 36	PToE (Academic) score of 42	PToE (Academic) score of 42
CITY & GUILDS IESOL		
B1 Achiever with a score of 43	B2 Communicator with a score of 42	B2 Communicator with a score of 42





FAQ'S

WAIRARAPA CAMPUS

What facilities are provided at the Wairarapa campus?

See page 38 for details.

What does the Wairarapa have to offer after hours?

The Wairarapa has a wide range of outdoor and sporting activities with tramping, hunting and fishing all available locally. We also have good shopping, movie theatres and recreational facilities. Masterton has a good sized town centre with shopping to cater for most needs. Staff put on activities in some evenings and during weekends. These can include sports nights and quiz nights. We provide transport to weekend sports for students who are playing or supporting friends. We also organise gun licences for those who are keen hunters. We offer driving lessons to encourage students to gain their drivers licence.

Can I keep a vehicle at Taratahi?

Yes, you can apply to keep a car at the campus.

How do I get to town if I don't have a vehicle?

Regular trips are made to Masterton for supplies and to take students to any appointments they may have in town.

Are all meals provided?

3 meals a day, 7 days a week are provided for the Level 3 full time students. Level 4 and 5 students usually live in one of five self-contained houses on campus. These houses have been set up to create a 'flatting' environment to teach students life skills. Therefore they cook and clean for themselves.

Can I bring a work dog to Taratahi?

Sheep and beef students are usually given the option to bring a dog after they have completed two terms of their programme. The dog should be under command and have all of its vaccinations and registration completed before arriving at Taratahi. Approval from the Sheep and Beef Manager is also required.

How do I keep in touch with family & friends?

Taratahi has a computer suite with access to telephones, email and internet. Free wifi is available at campus.

A young man with dark, curly hair, wearing a black jacket and black shorts, is standing in a grassy field. He is petting a black and white dog on its head. The dog is looking up at him. In the background, there are several white sheep and a fence. The scene is outdoors with trees and foliage in the distance.

ENROLMENT & FEES



FEES, LOANS & ALLOWANCES

Please note that these fees relate specifically to accommodation and other costs relating to the Wairarapa campus only. For information about programme fees, please refer to the information for the relevant programme. For information about our fees policy, as well as withdrawals and refunds please contact the Taratahi regional office relevant to your programme.

ACCOMMODATION AND MEAL COSTS

ARRANGEMENT	COST
LEVEL 3 Residential student	
	\$285 per week (40 weeks)
LEVEL 3 Day student (includes lunch Monday to Friday and accommodation when rostered on FARM STAY AWAY)	
	\$65 per week (40 weeks)
Level 4 AND 5 student	
	\$150 per week (22 weeks - Level 4) (32 weeks - Level 5)
Student recreation fee	
	\$100 pa
Hostel bond – Level 3	
	\$250 pa
Hostel bond – Level 4 and 5	
	\$500 pa



LOANS & ALLOWANCES

Taratahi students can apply for loans and/or allowances through Studylink. To find out if you are eligible visit the Studylink website: www.studylink.govt.nz or phone 0800 88 99 00.

SCHOLARSHIPS

Taratahi students can apply for a range of scholarships to assist with paying fees and/or accommodation at Taratahi. The following list highlights the many scholarship opportunities that are available.

SCHOLARSHIP	APPLICATIONS CLOSE	SCHOLARSHIP	APPLICATIONS CLOSE
Doris Elizabeth Swadling Trust	mid-January	Longview/Taratahi Scholarship	31 October
DairyNZ Excellence Award	28 February	Edmond Sanderson Jeff Farm Scholarships – Salvation Army	31 January
LA Alexander Trust	28 February	Robert Gibson Methodist Trust Board	20 November
Royce Nicholls Trust Scholarship	28 February	JE Prestidge Trust Scholarship	30 November
Margaret Bashford Scholarship	28 February	Peter Laing Memorial Trust	30 November
Sargent's Motorcycles	1 March	Ballance/Taratahi Scholarship	1 November
Beef and Lamb New Zealand	1 March	Harwood Farm Trust Scholarship	2 December
PGG Wrightson/Taratahi Scholarship – first year	1 March	Stihl Shop	Term 2, Term 4
Parininihi Ki Waitōtara Trust	March and September	PGG Wrightson/Taratahi Scholarship – second year	1 November
Whangarei A&P Society	30 September	Wairarapa Rural Women New Zealand	1 November
Māori Education Foundation – Agricultural Scholarships	30 April	Wairere/Taratahi Scholarship	1 November
Putaruru Veterinary Club Education Trust	30 June, 31 December	Wairarapa Rural Women New Zealand	1 November
Elsie and Laura Lehmann Trust	31 October	Meridian Energy	1 November
Rotary Club of South Wairarapa	31 October	Westpac	1 November
The Ann Sinclair Trust	31 October	Carterton District Council	1 March
Rural Women NZ	Refer to: www.ruralwomen.org.nz/services/bursaries	Williams ADB Charitable Trust	Contact Dorrington Poole & Partners in Dannevirke. Tel: 06 3747089
Janine Young Memorial Award	20 February	Tony and Vicki Miles	31 March
Richard Mills – Taratahi Scholarship	31 October		

For more detailed information about financial support and other scholarships available, please visit the scholarships page on our website, www.taratahi.ac.nz.

READY TO ENROL?

REQUEST AN APPLICATION PACK

For an application pack (which includes an enrolment form), please contact us either via email: info@taratahi.ac.nz or call: **0800 TARATAHI** (0800 827 2824).

APPLICATION PROCESS

Now that you've read your options, here's what you need to do next:

1. Fill in an enrolment form
2. Application assessed by Taratahi
3. Applicant notified of decision
4. If you are accepted:
 - You will need to organise payment of your fees.

Please note that programmes do fill up quickly, so please get your application form and required documentation in early.

SELECTION CRITERIA

The following criteria is used to select candidates for a full-time programme:

- Eligible to leave secondary school
- Interest in the chosen field of study (agriculture or equine)
- References.

COURSE ACCEPTANCE

Candidates for any programme will first be considered to establish the student's estimated likelihood of success in the programme. There may be some pre-requisites, such as interviews, attending a Taster course, providing additional information or agreeing to a study contract.

ENROLMENT

Students meeting the enrolment criteria are able to apply for a programme of study at Taratahi by filling in an enrolment form and providing the necessary documents. For programmes which have limited places, you may be required to wait until the closing date before being advised whether your application has been accepted.

For New Zealand Certificate in Agriculture (Level 3); National Certificate in Equine Skills (Sporthorse Stable Assistant) (Level 3); New Zealand Certificate in Agriculture (Level 4); Massey University Diploma in Agriculture (Level 5) or the Central North Island Dairy Academy:

The following documentation is also required:

- School report
- 100 word letter explaining why you want to enrol
- Written references x2
- Passport photo
- A certified birth certificate
- A copy of driver's licence (if you have one).

CONTACTS

HEAD OFFICE

529 Cornwall Road, RD7
Masterton 5887
0800 TARATAHI (0800 827 2824)
Email: info@taratahi.ac.nz

NORTHLAND

35e Commerce Street,
Whangarei 0110
T: 0800 TARATAHI
E: northland@taratahi.ac.nz

AUCKLAND

Manukau Institute of Technology
NH Building
Gate 13, Alexander Crescent,
Otara, Auckland 2023
T: 0800 TARATAHI
E: auckland@taratahi.ac.nz

WAIKATO/BAY OF PLENTY

83 Princes St
Putaruru
T: 0800 TARATAHI
E: waikato@taratahi.ac.nz

TARANAKI

PO Box 138
343 – 345 Broadway, Stratford 4352
T: 0800 TARATAHI
E: aranaki@taratahi.ac.nz

HAWKE'S BAY

c/o Eastern Institute of Technology
Private Bag 1201, Napier 4142
501 Gloucester St, Taradale, Napier
T: 0800 TARATAHI
E: hb@taratahi.ac.nz

MANAWATU

T: 0800 TARATAHI
E: manawatu@taratahi.ac.nz

WAIKARAPA

529 Cornwall Road, RD7
Masterton 5887
T: 0800 TARATAHI
E: info@taratahi.ac.nz

SOUTHLAND

c/o Southern Institute
of Technology
133 Tay Street
Invercargill 9810



@TaratahiNZ



Taratahi



@taratahi

www.taratahi.ac.nz
