

EASTERN INSTITUTE OF TECHNOLOGY

PROSPECTUS

2018



THE EXPERIENCE YOU NEED
& THE SUPPORT TO SUCCEED



EIT

Te Aho a Māui

OUR LOCATIONS

Tairāwhiti Campus
290 Palmerston Road
Gisborne
06 869 0810

Rural Studies Unit
312-314 Stout Street
Gisborne
06 869 0810

Auckland Campus
238 Queen Street
Auckland
09 300 7410

Hawke's Bay Campus
501 Gloucester Street
Taradale, Napier
06 974 8000

Some of our programmes are offered online or by distance, so you can study anywhere within New Zealand.

REGIONAL LEARNING CENTRES

CENTRAL HAWKE'S BAY

53 Russell Street
Waipukurau
06 858 7009

HASTINGS

First Floor, Tower Building
215 Railway Road, Hastings
06 974 8936

MARAENUI

18-20 Bledisloe Road
Maraenui, Napier
06 842 0591

RUATORIA

4 Hekiera Road
Ruatoria
06 864 8063

TOKOMARU BAY

40 Toa Street
Tokomaru Bay
06 864 5402

WAIROA

Cnr Paul and Queen Streets
Wairoa
06 838 7349

CONTENTS

The experience you need	5	English Language	37
The support to succeed	7	Health & Sport Science Community Health & Wellness, Massage, Recreation & Sport	39
Campuses built for your needs	9	Nursing & Health Science	43
How we'll support you	11	Hospitality	51
World class 'A' rated lecturers	13	Māori Studies Te Ūranga Waka Te Whatukura	55
What should you study?	14	Professional Practice	58
Understanding qualifications	15	Māori Visual Arts Toihoukura	59
What's the difference between EIT and a university?	15	Primary Industries Agriculture, Apiculture, Horticulture, Forestry	63
Financial support for your study	16	Teaching & Social Work	73
Beauty & Hairdressing	18	Tourism & Travel	78
Business	22	Trades & Technology Architecture, Automotive, Carpentry, Electrical, Engineering, Plumbing & Gasfitting	80
Computing	28	Veterinary Nursing Animal Care, Veterinary Nursing	84
Creative Industries ideaschool Creative Careers, Fashion, Music, Screen Production	32	Viticulture & Wine Science Science, Viticulture, Wine Science	86
  		Enrolment information	91

STUDENT STATISTICS

5 Masters degrees

13 Postgraduate programmes

12 Bachelor degrees

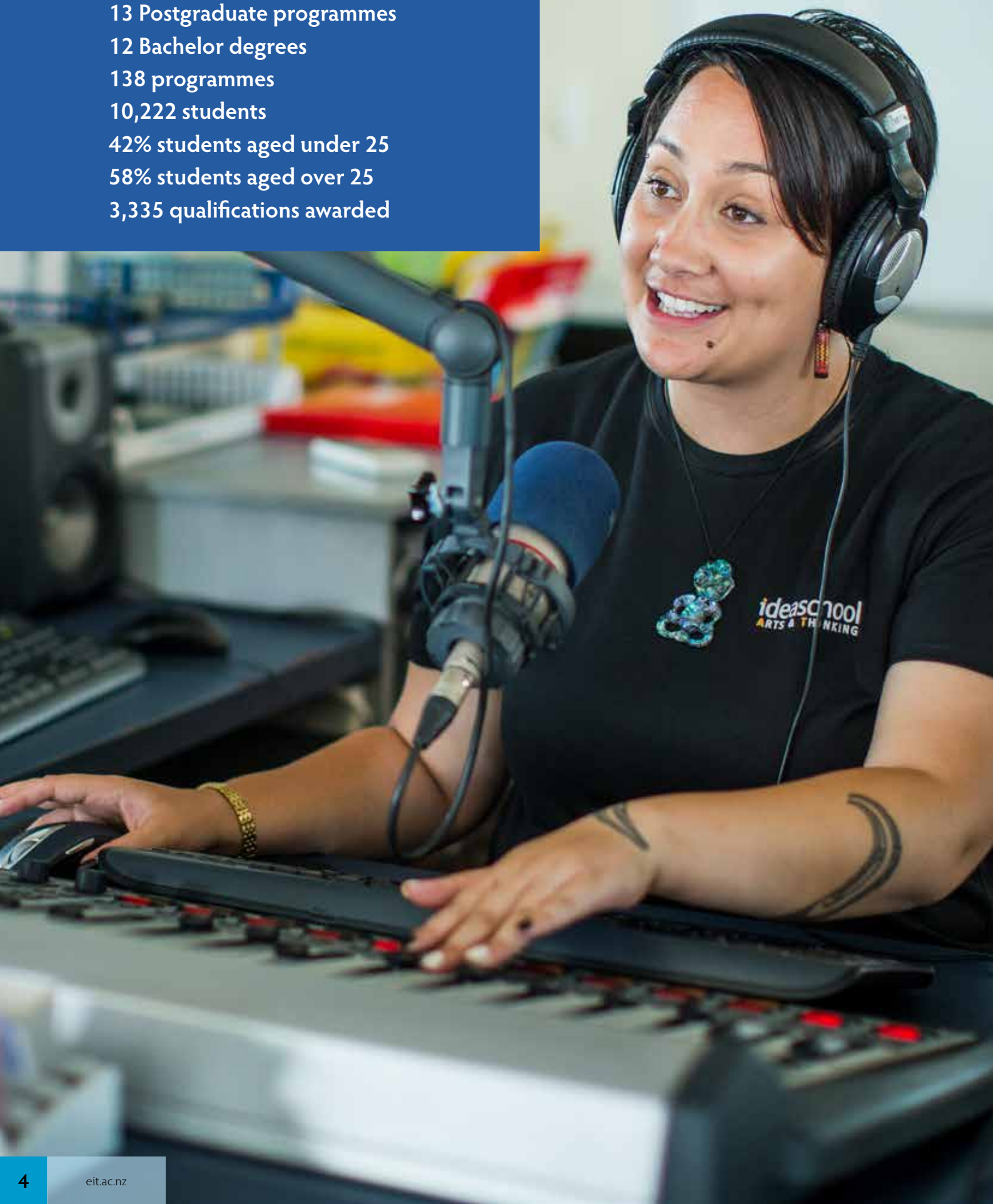
138 programmes

10,222 students

42% students aged under 25

58% students aged over 25

3,335 qualifications awarded





THE EXPERIENCE YOU NEED

When you study at EIT you'll get the kind of experiences that will help you gain the knowledge and skills to get ahead, whether you want to break into your chosen career or change direction in life.

You'll experience being part of a vibrant learning community in one of New Zealand's top tertiary institutes, and be taught by experienced lecturers who have track records as respected academics and industry professionals.

You'll get the benefit of EIT's long-established connections with industry throughout New Zealand. Many of our programmes are field-based to help you develop relevant work skills, gain practical experience, and get useful industry contacts which can set you on the path to a great job, all while you're studying.

You'll have the experience of studying at our modern well-equipped campuses or at our regional learning centres, and you'll gain invaluable experience using our facilities and state-of-the-art technology.





& THE SUPPORT TO SUCCEED

At EIT you'll get the support you need to help make sure you get the rewards for your hard work. If you're serious about study and your future, EIT is right behind you.

You'll learn in classes that are the right size to make sure you get the involvement and support you need, and you can receive help and guidance with everything from study planning, to applying for a job after you complete your studies.

You'll be supported by lecturers who are here for you, within a learning environment where you are treated as an individual, not a number. They'll know your name and you'll receive one-on-one attention to make sure you get the support to succeed.



**TEXT
4631**

FOR A
CAMPUS
TOUR*

In a survey of EIT graduates from 2016, 93% said that they would recommend their programme to others.



CAMPUSES BUILT FOR YOUR NEEDS

EIT offers you qualifications from certificate to postgraduate level at campuses in Hawke's Bay, Tairāwhiti (Gisborne) and Auckland. Or you can learn closer to home at one of the Regional Learning Centres in Hastings, Maraenui, Ruatoria, Tokomaru Bay, Waipukurau and Wairoa, plus other pop-up centres near you.

EIT Hawke's Bay is one of New Zealand's most attractive campuses with superb architecture and shaded outdoor areas for study on warm days. EIT Tairāwhiti's two campuses are located in the heart of Gisborne, near the Taruheru River, and you can't get more central than EIT Auckland's location on Queen Street.

Our campuses have top quality facilities, purpose-built for EIT programmes, including high-tech trades workshops, professional-standard training kitchens and a fully-equipped wine science and viticulture laboratory.

Get connected by jumping onto campus-wide free wifi. EIT's libraries put resources at your fingertips, with expert librarians on-hand to help you, and you can get your textbooks and stationery sorted at Ōtātara Bookshop at the Hawke's Bay campus.

To print your work professionally, fully-equipped printing services handle everything from large format printing to document binding, for a price that won't put a dent in your finances.

Hungry after all your study? You can enjoy bustling campus cafés and student training cafés to catch up with fellow students over a cup of coffee or lunch.



Academic Learning Services

You can get help and advice on all aspects of study, including study planning, writing assignments, basic computing, maths, academic writing and exam techniques.



STAR/Gateway

Want help making the move from secondary school to tertiary education and training, plus gain credits towards your chosen career qualification while studying NCEA? Talk to the STAR/Gateway Coordinator.

Chaplaincy

EIT has a team of chaplains available for you. They are mostly volunteers and represent all the main faiths and spiritualities.



Childcare

We'll take care of your children while you take care of your studies. Ōtātara Children's Centre at EIT Hawke's Bay and Manaaki Tamariki Child Care Centre at EIT Tairāwhiti are open for you. Bookings are essential.



Career Development

EIT Career Development Services can help you make career choices, work out what to study, and give you guidance and information about finding a job, or kick-starting your career.

Bookshop

The Ōtātara Bookshop caters for students' on all campuses stationery and textbook needs. The shop also sells stamps, a range of greeting cards and small gift items.

Schools and Community Liaison

EIT's liaison team can hold events and presentations for schools, community and industry on-campus or at your location. In addition to information and enrolment days, groups and individuals can book a campus tour year-round.



EIT Students' Association

EITSA is here to represent you. From looking after your interests to organising social events and activities, plus EITSA arranges discounts and exclusive deals – for EIT students only.

eitsa.ac.nz



Pouwhirinaki – Māori & Pasifika Student Support

You can get advice, mentoring and advocacy in pastoral care, cultural needs and values, te reo Māori, waiata and tikanga, scholarships, iwi and hapū registrations and grants.



Māori and Pasifika

Our support team works with organisations, fanau, iwi, hapū and whānau. You can get guidance with study options, academic support and much more.

Disability Services

Dedicated support includes adaptive technology, alternative exam arrangements, assistance with funding, and disability car parking on-campus.

Trades Academy @ EIT

If you're at secondary school you can get practical, hands-on training in trades and other programmes, one day a week, and earn credits towards your NCEA Level 2 qualification.



HOW WE'LL SUPPORT YOU

Studying takes determination, commitment and self-discipline. As a student at EIT, you can get support to help you focus on what really matters – your studies and your future.

When you become a student at EIT, it may be your first time away from home, or the first time you've studied at a tertiary level. It may all be very new to you.

Your studies will take up a lot of your time, so you may need a hand with other parts of life.

To help you get the most out of your time here, EIT offers you support in all sorts of ways. Whether you're after help to choose the right subjects or you need some guidance to show you the best way to get into your chosen career, there's someone available to help.

Get personal one-to-one help from EIT's friendly experts who have plenty of experience helping students like you. They're on campus to offer advice, information and guidance.

We want your time at EIT to be exciting, productive and successful, so make sure you take advantage of all the support we offer.



Dr Derek Lardelli
Professor/Ahorangi
Principal Lecturer | Toihoukura



Professor Nat Waran
Executive Dean
Faculty of Education Humanities and Health Science



Associate Professor Pamela Wood
Senior Lecturer | Nursing and Health Science



Dr Steve Hinge
Lecturer | Business



Dr Carmo Saunders-Vasconcelos
Associate Professor
Viticulture and Wine Science



Dr Bridget Sutherland and Dr Mandy Rudge
Senior Lecturers | ideaschool



WORLD CLASS 'A' RATED LECTURERS

EIT lecturers have the latest knowledge and research in their field of expertise and are able to attract all-important research grants. For you, it means highly qualified academics who have the most up-to-date learning available.

EIT is rated one of the top two institutes of technology and polytechnics in New Zealand for research excellence by the Tertiary Education Commission. This helps EIT secure funding through the Government's performance-based research fund.

Government funding helps EIT continue to play a leading role in research in New Zealand.

Our lecturers are in demand to work closely on research projects with universities, polytechnics, businesses and organisations at regional, national and international levels. They pass on their knowledge to you via their teaching.

When you study at EIT, you will be at an institute that is highly rated for quality academic research.

WHAT SHOULD YOU STUDY?

DID YOU KNOW?

Bachelors degree graduates have median earnings 46% higher than the national median income, five years after graduating, and masters degree graduates median incomes are 68% higher.

Ministry of Education. (2015). Student Loan Scheme Annual Report 2014/15.

Some people know exactly what they want to do in life, so choosing what to study is much easier. They know what they are good at; they know their strengths and how they want to use them.

But for many people it's not so easy. There are lots of courses, many different jobs, and plenty of career choices out there. So making the right decision about what to study can seem daunting.

It's a good idea to get lots of information to help you make a well-informed decision. A good place to start is the Government's Careers NZ website at careers.govt.nz.

It's a good idea to think about what you're interested in. Spend some time thinking about what you like and don't like, and what you're good at.

If you have an idea of a profession, you could talk to people who are working in the industry. They can tell you what skills, experience and qualifications you need.

You may find that you have knowledge, skills or previous achievements that can count towards your qualification.

At EIT, we've got lots of experience helping students make important decisions and pointing them in the right direction.

Come and have a chat with us. We can put you in touch with programme coordinators and arrange an appointment to talk with the careers counsellor about education, training and career choices.

UNDERSTANDING QUALIFICATIONS

Programmes & Courses	A programme results in a qualification and consists of a number of courses. Some programmes consist of compulsory courses while others have a selection of elective courses, or a combination.
Credits	Courses consist of credits, and when a course is successfully completed, the credits will be counted towards the qualification. One credit usually consists of 10-12 hours of learning.
Levels	Levels indicate the depth of knowledge and complexity of skills required. The higher the level, the more complex the concepts and skill sets. In New Zealand the levels progress from Level 1 to Level 10.
Short Courses	Don't generally result in formal qualifications. To find out more check out shortcourse.eit.ac.nz
Certificate	Levels 1 - 6 12 weeks - 2 years Provides an introduction to a subject and may be completed as a path towards higher level study.
Diploma	Levels 4 - 6 1 - 2 years 120 credits
Bachelors Degree	Level 7 3 - 4 years 360 credits (Honours: Level 8 480 credits)
Graduate Certificate Graduate Diploma	Level 7 6 months - 2 years Certificate: 60 credits, diploma: 120 credits This allows a degree graduate to study further courses at the same level as their degree but in a different or additional specialisation.
Postgraduate Certificate Postgraduate Diploma	Level 8 6 months - 1 year Certificate: 60 credits, diploma: 120 credits Postgraduate study extends and deepens knowledge and skills after completing a bachelor's degree, and prepares students for independent research and scholarships.
Masters Degree	Levels 9 and above 1.5 - 2 years 120 - 240 credits A master's degree qualifies individuals who apply an advanced body of knowledge in a range of contexts for research, a pathway for further learning, professional practice and/or scholarship.

WHAT'S THE DIFFERENCE BETWEEN EIT & A UNIVERSITY?



For those with no formal qualifications or who have been away from study for a while, our entry level certificates mean we can offer you a unique opportunity to progress further into higher level programmes, and eventually degrees if you want. Or you can go straight into an entry level job position in the first step to a new career.

We also offer vocational study that is tailored to the regions specific requirements, meaning you are qualified and work-ready to get local in-demand jobs.

You no longer have to leave home to get a recognised degree as our degrees (called 'Bachelors') are absolutely equal to those offered at New Zealand universities. In fact, research shows that EIT graduates are viewed by local employers to be as good as graduates from anywhere else*.

Our postgraduate offerings mean you don't have to travel and miss out on work or family to further your career.

However you define your success, when you study at EIT we'll give you the experiences and support you need, to help you achieve it.

*Troy, V. (2013). *EIT 2013 Community and Stakeholder Brand Survey*. Hawke's Bay, New Zealand: SIL Research.

FINANCIAL SUPPORT FOR YOUR STUDY

Scholarships and grants make life easier by helping to cover your fees, other costs and living expenses while you study. You don't always need to be an academic high-flyer to qualify.

EIT has a long list of scholarships which you can apply for. So if you would like to get financial help with your study, make sure you find out what's available. You can also take a look online at the [givME](#) database available at EIT. It lists every scholarship and grant available in New Zealand.

Te Ara o Tākitimu – Māori and Pasifika Trades Training

If you are aged 16 to 40 and looking to gain a trade qualification and apprenticeship, you can apply for funding, support and incentives for a wide range of programmes from Levels 3 to 4.

Year 13 Degree Scholarship – 100% FREE tuition for Year One

EIT has limited Year 13 Degree Scholarships. They're available to eligible Hawke's Bay and Tairāwhiti students from Hick's Bay to Taupō and Dannevirke.

If you're a Year 13 student from anywhere in New Zealand applying for the Bachelor of Viticulture, the Bachelor of Wine Science, or the Bachelor of Māori Visual Arts, you're also eligible.

You'll need to be a Year 13 secondary school leaver, resident in New Zealand, meet the degree entry (plus scholarship) criteria and start full-time degree study in February 2018.

Youth Scholarship

If you are aged between 16 and 19 (or 15 with an early leaving exemption) and wanting to study at Levels 1 to 3, you can apply for a Youth Scholarship. You may be eligible for funding for fees and compulsory course costs, travel, plus academic and other support.

Sport Hawke's Bay – EIT Sports Scholarship

The Sport Hawke's Bay – EIT Sports Scholarship have been developed to assist top sports performers to train and study in Hawke's Bay.

Five scholarships of up to \$2,000 each are awarded to sports performers enrolled or enrolling in an EIT qualification, to be spent on anything from training fees to equipment or study fees.

Any sports performer willing and able to represent Hawke's Bay or New Zealand can apply.



Truman Stuart, Anecia Winipera, Laura Langley and Ruben Parker
Sport Hawke's Bay and EIT Sports Scholarships Recipients

Year 13 Degree Scholarships are available for:

- Bachelor of Arts (Māori)
- Bachelor of Business Studies
- Bachelor of Computing Systems
- Bachelor of Māori Visual Arts (Te Toi o Ngā Rangi)
- Bachelor of Nursing
- Bachelor of Recreation and Sport
- Bachelor of Social Work
- Bachelor of Teaching (Early Childhood Education)
- Bachelor of Teaching (Primary)
- Bachelor of Visual Arts and Design
- Bachelor of Viticulture
- Bachelor of Wine Science



For more about EIT's scholarships check out scholarships.eit.ac.nz or phone 0800 22 55 348.

Scholarships and grants are subject to change.

* Text your name, address and the word YR13. Usual message charges apply.

BEAUTY & HAIRDRESSING



INTRODUCTION TO BEAUTY, HAIRDRESSING, STYLING & HEALTH



Here's a perfect introduction to applied practical skills in beauty, hairdressing, personal styling and health. After graduating you may specialise and pursue your interests by progressing to a higher-level qualification.

To find out more check out styling.eit.ac.nz

NZ Certificate in Foundation Skills (Styling) [Level 2]

FEE FREE

This will introduce you to a range of subject areas and practical skills in beauty therapy, hairdressing, personal styling and fitness. You could then go on to further studies in these areas. Activities are hands-on and will include some theory so that you have the opportunity to achieve NCEA Level 1 numeracy and literacy.

ENTRY REQUIREMENTS

This is an open entry programme which means no formal academic qualifications are required. You must be aged 16 or over.

Length	17 weeks full-time	Start date	February and July
Fee	Fee free	Campus	Hawke's Bay

BEAUTY & BODY THERAPY

In today's busy, stressful work, beauty therapists have people's happiness and well-being in their hands. With EIT's programmes you'll learn anatomy, physiology and the hands-on art of beauty therapy. You'll get experience looking after clients at "Refresh" EITs on-campus beauty therapy clinic, using the latest equipment. With comprehensive academic learning and practical experience, you'll graduate with excellent career prospects.

YOUR CAREER OPPORTUNITIES

At the end of the programmes your skills could find you working in makeup and skin care retail, beauty therapy clinics, day spas or even on a cruise ship.

To find out more check out beauty.eit.ac.nz

NZ Certificate in Makeup and Skin Care [Level 3]

(Subject to approval and accreditation)

Students will learn about skin care and makeup techniques to be able to work in the beauty sector as technicians providing a range of makeup and skin care services.

ENTRY REQUIREMENTS

You must have NCEA level 1 or provide evidence of achievement at an equivalent level. Applicants aged over 20 who can show evidence of ability to successfully achieve may be considered.

Length	17 weeks full-time*	Start date	July
Fee	\$6,025 per year (approx)	Campus	Hawke's Bay

* Part-time study available



NZ Certificate in Beauty Therapy [Level 4]

(Subject to approval and accreditation)

Would you like to help people look and feel great by introducing them to a range of beauty and relaxation treatments? This programme provides the fundamental skills in beauty therapy from cosmetic enhancements, to waxing and relaxation massage. On successful completion of the NZ Certificate in Beauty Therapy, students can progress into the NZ Diploma in Beauty Therapy.

ENTRY REQUIREMENTS

NCEA level 2, or provide evidence of achievement at an equivalent level. Applicants aged over 20 who can show evidence of ability to successfully achieve may be considered.

Length	1 year full-time*	Start date	February and July
Fee	\$6,025 per year (approx)	Campus	Hawke's Bay

* Part-time study available

NZ Diploma in Beauty Therapy [Level 5]

(Subject to approval and accreditation)

Learn the skills to work as a qualified Beauty Therapist. Further enhance client skin analysis to provide advanced electrical therapy, body exfoliation and wraps and give nutritional advice to enhance people's appearance and make them feel fantastic.

ENTRY REQUIREMENTS

Successful completion of NZ Certificate in Beauty Therapy or equivalent.

Length	1 year full-time*	Start date	February and July
Fee	\$6,025 per year (approx)	Campus	Hawke's Bay

* Part-time study available

HAIRDRESSING

Here's your chance to earn a qualification that will help you get ahead in hairdressing. You'll start by learning about customer service, shampoo techniques, tools and equipment usage, long and short hair styling, colouring and trichology, and more. In year two, you'll get into more advanced long and short hairstyling, haircutting techniques, perming, advanced colouring and lots more. You'll train in EIT's "Elite" commercial hairdressing training salon, and gain real skills working with real clients under the guidance of expert lecturers.

YOUR CAREER OPPORTUNITIES

Show your true style and follow your passion - there are lots of opportunities for qualified hairdressers. You could create a career in local salons or head further afield, and maybe one day have your own salon. For a professional stylist with a flair for hair, anything is possible.

To find out more check out hair.eit.ac.nz

NZ Certificate in Hairdressing (Salon Support) [Level 3]

Get practical skills backed up by theoretical knowledge. From simple trims to wave-blown restyles, this certificate will equip you with the skills and techniques to set you on the path to becoming a professional stylist. This programme leads on to the level 4 certificate.

ENTRY REQUIREMENTS

You need to meet the NCEA Level 1 literacy and numeracy requirements, or provide evidence of achievement at an equivalent level, or minimum 8 credits from Gateway or Trades Academy unit standards. If English is not your first language, you must have an IELTS minimum score of 5.0 Academic (or equivalent).

Length	1 year full-time*	Start date	February and July
Fee	\$7810 (approx)	Campus	Hawke's Bay

* Part-time study available

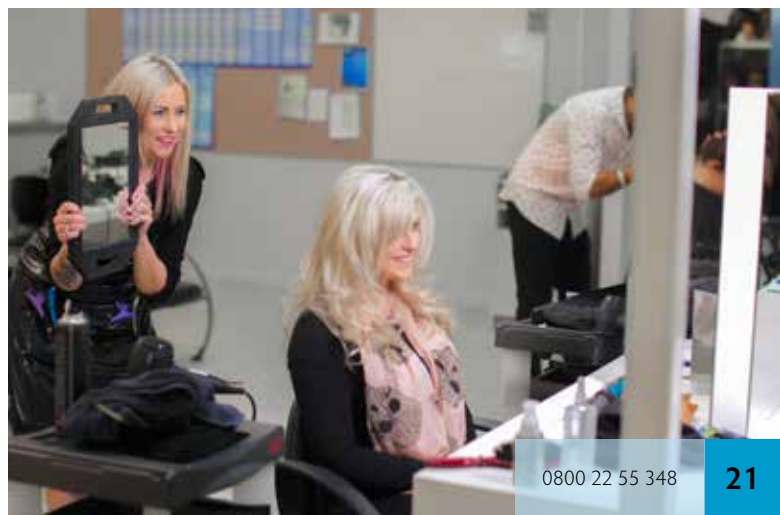
NZ Certificate in Hairdressing (Emerging Stylist) [Level 4]

Develop technical skills on your pathway to becoming a stylist employed within the hairdressing industry. Advance your knowledge, creativity and skills in advanced long and short hair styling, hair and scalp conditioning and treatment, hair cutting, colouring, perming and relaxing, within our salon facilities. Students may undertake this programme while working in the hairdressing industry.

ENTRY REQUIREMENTS

Preference will be given to applicants who have successfully completed the EIT Certificate in Hairdressing [Level 3], or NZ Certificate in Hairdressing (Salon Support) [Level 3]. There is alternative entry available, please see website for details.

Length	1 year full-time	Start date	February and July
Fee	\$7,515 (approx)	Campus	Hawke's Bay



BUSINESS

"I love EIT."

"It saved me a lot of money and I got a good education out of it. It was as good as any university in New Zealand at probably half the price."

"I love the lifestyle in Gisborne. It's very chilled out and the cost of living is so much cheaper here."

Isaac Hughes

Bachelor of Business Studies graduate
Coates Associates Ltd.

BUSINESS

REAL LIFE | REAL LEARNING | REAL BUSINESS

EIT School of Business is proud of its programme innovations which began in 2017. Four start points per year gives more flexibility - you can start when you wish. Assessments have been redesigned to better match real world situations - so there are fewer exams! Our programmes are closely connected to the business and wider community so they are relevant and help you build your networks for the future.

YOUR CAREER OPPORTUNITIES

In this highly competitive world, businesses and organisations need people with skills and knowledge that can give them an edge. Opportunities for qualified business people include working in private companies, government and not-for-profit sectors.

To find out more check out business.eit.ac.nz

NZ Certificate in Retail (Customer Service and Sales Support) [Level 2]

FEE FREE

Get a head start in the retail industry and acquire practical skills like creating attention-grabbing displays and helping customers. The retail industry is a dynamic career choice, so learn to give outstanding customer service with confidence and take advantage of the number of jobs available to people with the right skills.

ENTRY REQUIREMENTS

This is an open entry programme which means no formal qualifications are required. You must be aged 18 or over. A personal interview may be part of the application process. You are required to have a reasonable reading level in order to cope with the programme and carry out written instruction.

Length	15 weeks full-time*	Start date	March and August
Fee	Fee FREE	Campus	Hastings (full-time) or Maraenui (part-time, March start only)

* Part-time study available (on demand only)

NZ Certificate in Business (Introduction to Small Business) [Level 3]

Prepare to start a small business – identify and assess the opportunities and requirements for small businesses. This programme will prepare you well for small business in New Zealand.



ENTRY REQUIREMENTS

NCEA Level 2 or an approved qualification at Level 2/3 or above. Or those with knowledge and/or work experience with numeracy and literacy abilities to be able to complete the qualification. An interview will be required. Please see website for full details.

Length	1 year part-time EVENING CLASSES or 19 weeks full-time online	Start date	Evening classes - February, May, July and October. Online - Flexible start dates
Fee	Evening classes - \$3,325 per year (approx) Online - \$600-700 per year (approx)	Campus	Hawke's Bay or online

NZ Certificate in Business (Introduction to Small Business) [Level 4]

Improve your capability to establish, operate, grow and sustain a small business. You will be able to enhance the viability, survival and growth of business entities and their sector.



ENTRY REQUIREMENTS

NCEA Level 2 or an approved qualification at Level 2/3 or above. Or those with knowledge and/or work experience with numeracy and literacy abilities to be able to complete the qualification. An interview will be required. Please see website for full details.

Length	1 year part-time EVENING CLASSES or 19 weeks full-time online	Start date	Evening classes - February, May, July and October. Online - Flexible start dates
Fee	Evening classes - \$3,325 per year (approx) Online - \$600-700 per year (approx)	Campus	Hawke's Bay or online

NZ Certificate in Business (Introduction to Team Leadership) [Level 3]

Become a team leader with the confidence you need to succeed. Take your first step to management by gaining the skills and most importantly the confidence to give direction, feedback and motivation. Put your best foot forward and learn the skills required to move into your first leadership role.



ENTRY REQUIREMENTS

NCEA Level 1 or an approved qualification at Level 1 or above. Or those with knowledge and/or work experience with numeracy and literacy abilities to be able to complete the qualification. An interview will be required. Please see website for full details.

Length	16 weeks full-time*	Start date	Flexible start dates
Fee	\$500 to \$600 per year or \$171 per course (approx)	Campus	Online delivery

* Part-time study available

NZ Certificate in Business (Administration and Technology) [Level 3]

This programme is ideal if you want to work in office administration. It gives you the essential skills and knowledge to work or gain employment, in a wide range of supervised general office administration roles in a variety of sectors. These may include: receptionist, data entry operator, front line customer service role, call or contact centre operator, secretary, office support worker. Great administrators are at the heart of a well-run office and this programme gives you the skills you need to take on the responsibility.

ENTRY REQUIREMENTS

NCEA Level 1 or an approved qualification at Level 1 or above. Or those with knowledge and/or work experience with numeracy and literacy abilities to be able to complete the qualification. An interview will be required. Please see website for full details.

Length	6 months full-time*	Start date	February and July
Fee	\$2,763 per 60 credit programme (approx) including course related costs	Campus	Hawke's Bay or Tairāwhiti

* Part-time study available

NZ Certificate in Business (Administration and Technology) [Level 4]

This programme is ideal if you want to work in office administration and executive support. It gives you the essential skills and knowledge to work, or gain employment, in a wide range of general office administration roles in a variety of sectors under broad guidance. These may include: a sole-charge role in a small business entity, senior receptionist, customer relationship role, personal assistant and secretary, lead administrator, front line customer service role, call or contact centre operator, office support worker, web administrator, service desk coordinator. Great administrators are at the heart of a well-run office and this programme gives you the skills you need to take on the responsibility.

ENTRY REQUIREMENTS

An approved qualification at Level 3 or above. Or those with knowledge and/or work experience with numeracy and literacy abilities to be able to complete the qualification. An interview will be required. Please see website for full details.

Length	6 months full-time*	Start date	February and July
Fee	\$2,763 per 60 credit programme (approx) including course related costs	Campus	Hawke's Bay

* Part-time study available

NZ Certificate in Project Management [Level 4]

This programme can lead to a career down many paths both in New Zealand and internationally. It is a fantastic foundation for you to develop knowledge in how to manage projects from inception to completion. Become an asset to any organisation through increased project success and consistent application of project management skills.



ENTRY REQUIREMENTS

NCEA Level 2 or an approved qualification at Level 2/3 or above. Or those with knowledge and/or work experience with numeracy and literacy abilities to be able to complete the qualification. An interview will be required. Please see website for full details.

Length	19 weeks full-time*	Start date	Flexible start dates
Fee	\$600 to \$700 per year or \$160 per course (approx)	Campus	Online delivery

* Part-time study available

NZ Certificate in Business (First Line Management) [Level 4]

This programme will provide you with the skills you need to effectively manage a team to reach goals and achieve objectives within the New Zealand business environment. You will learn the technical knowledge and skills, people skills and knowledge of the business environment.



ENTRY REQUIREMENTS

See entry requirements in NZ Certificate in Project Management [Level 4] for more details.

Length	19 weeks full-time*	Start date	Flexible start dates
Fee	\$600 to \$700 per year or \$160 per course (approx)	Campus	Online delivery

* Part-time study available

NZ Certificate in Business (Accounting Support Services) [Level 4]

This qualification sets the foundations of good accounting practice. You will have the opportunity to gain knowledge and understanding of the principles and practices behind key accounting concepts. You will be able to carry out a range of accounting support services and work in many accounting support roles in business entities.

ENTRY REQUIREMENTS

See entry requirements in NZ Certificate in Project Management [Level 4] for more details.

Length	1 year part-time EVENING CLASSES	Start date	February, May, July and October
Fee	\$2,821 per year (approx)	Campus	Hawke's Bay

NZ Diploma in Business [Level 5]

This qualification will lead you into business and beyond. You will develop an organised approach to independent working and improve your communication skills. You will become an effective problem solver, and will be able to recognise the ethical dimensions inherent in decision making. You can choose to specialise in either accounting or leadership and management. Once completed, you can pathway into the second year of the Bachelor of Business Studies.

ENTRY REQUIREMENTS

NCEA Level 2, a NZQA qualification at Level 2 or above with evidence of literacy and numeracy equivalent to NCEA Level 1. You may also meet entry requirements if you have completed a Level 4 business qualification or have New Zealand University Entrance. If you are aged 20 or over, you must be able to demonstrate ability to study at diploma level.

Length	1 year full-time*	Start date	February, May, July and October
Fee	\$5,294 per year (approx)	Campus	Hawke's Bay or Tairāwhiti Some courses can be studied online

* Part-time study available

Bachelor of Business Studies [Level 7]

This degree will give you a strong foundation in business and help you gain the skills today's employers demand. You'll benefit from a wide-ranging business education with plenty of practical experience, and you can choose to specialise in majors in accounting, management, marketing or management and marketing. Small classes and experienced staff means you'll get the right level of support to show employers you mean business. This programme distinguishes itself by being practically orientated and having a work-based project element for real-world learning.

ENTRY REQUIREMENTS

You must meet university entry requirements (see website for details). Approved foundation programmes include the EIT Diploma in Applied Business and New Zealand Diploma in Business, or provisional entry without prerequisites for those over 20 years.

Length	3 years full-time*	Start date	February, May, July and October
Fee	\$5,294 per year (approx)	Campus	Hawke's Bay or Tairāwhiti** Some courses can be studied online

* Part-time study available ** Only the accounting and management major are offered at Tairāwhiti.

Graduate Diploma in Business [Level 7]

The Graduate Diploma in Business enables those who have completed a bachelor's degree to achieve a degree level qualification in business or in a specialised area of business. Endorsements include:

- Management
- Accounting
- Entrepreneurship
- Business analysis
- Health services management
- Human resource management
- Logistics and supply chain
- Project management
- Sales and marketing
- Wine industry (see page 90)
- Unendorsed

These endorsements will particularly suit those who are seeking to enhance their career opportunities, or those seeking to add industry related skills to an existing business qualification.

ENTRY REQUIREMENTS

You need a degree or equivalent qualification, or work in business and can demonstrate evidence of significant work and professional experience at degree level or above. Graduates from non-business disciplines may require preparatory study before enrolment.

Length	1 years full-time*	Start date	February, March and July
Fee	\$5,264 (approx) depending on course selection	Campus	Hawke's Bay or Auckland

* Part-time study available

Graduate Diploma in Professional Accounting [Level 7]

If you have already completed a degree in business studies with an accounting specialisation, this programme will enable you to meet all academic requirements for membership of Chartered Accountants Australia and New Zealand (CAANZ). This prepares you for the practical experience and professional competence components of the requirements to become a full member of CAANZ.

ENTRY REQUIREMENTS

You must have completed a Bachelor of Business Studies with a strong component of accounting. If you have a business degree with a major other than in accounting, you are welcome to apply, but you must liaise with the programme coordinator before enrolment.

Length	1 years full-time*	Start date	February, May, July and October
Fee	\$5,294 (approx)	Campus	Hawke's Bay

* Part-time study available

Postgraduate Certificate in Applied Management [Level 8]

This programme enables those who have completed a degree in business, or similar, to achieve a postgraduate level qualification in applied management. The certificate is also a direct entry path into postgraduate study for New Zealand residents who have significant industry and/or life experience, but who have not completed an undergraduate qualification.

ENTRY REQUIREMENTS

You need to have completed either a degree in business or a related area (or equivalent qualification), or have significant industry and/or life experience.

Length	6 months full-time*	Start date	February and July
Fee	\$3,523 (approx)	Campus	Hawke's Bay or online with an on-campus component

* Up to 2 years part-time

Postgraduate Diploma in Applied Management [Level 8]

This programme will support your development as self-employed practitioner, or your career in domestic and/or international organisations across a broad range of industries and agencies. The areas include finance, markets, people and culture, planning, technology, innovation, globalisation, sustainability and the management of small to medium-sized enterprises.

ENTRY REQUIREMENTS

You need to have either completed a degree in business or a related area (or equivalent qualification) or the Postgraduate Certificate in Applied Management [Level 8].

Length	1 year full-time*	Start date	February and July
Fee	\$881 per 15 credit Level 8 course, \$1,763 per 30 credit Level 8 course, \$2,644 per 45 credit Level 9 course (approx)	Campus	Hawke's Bay or online with an on-campus component

* Up to 4 years part-time

Master in Applied Management [Level 9]

Further develop your skills as a self-employed practitioner, or your career in domestic and/or international organisations across a broad range of industries and agencies. The areas include domestic and international markets, marketing, financial and cost management, leadership, performing business in a multi-cultural environment, strategic planning and strategic management, corporate planning, managing and controlling different types of technology, innovation and entrepreneurship, consultancy, operations and business in the global world, sustainable business, and research in industry and business.

ENTRY REQUIREMENTS

You need to have completed a business degree or a postgraduate diploma in business or similar. Specific situations will also be given consideration.

Length	18 months full-time (or 6 months if you already have EIT's Postgraduate Diploma in Applied Management)*	Start date	February and July
Fee	\$881 per 15 credit Level 8 course, \$1,763 per 30 credit Level 8 course, \$2,644 per 45 credit Level 9 course (approx)	Campus	Hawke's Bay or online with an on-campus component

* Up to 6 years part-time

COMPUTING

FUJITSU

"The lecturers at EIT go above and beyond to support the students."

"They put 110% into everything that they do. They are more than supportive and almost turn into family. For my internship I chose to come to Fujitsu and at the same time they were also advertising a job so ... I got the job."

Clayton Farmer
Bachelor of Computing Systems graduate
Fujitsu

COMPUTING

Looking for a serious computing qualification? At EIT you can gain a practical qualification that is designed to help you gain employment in the IT industry. Most EIT diploma programmes and the Bachelor of Computing Systems include industry-based placements or internships that can lead you to permanent employment.

YOUR CAREER OPPORTUNITIES

As an in-demand IT graduate you can take your skills anywhere in the world, be well paid and work in a fast-moving industry that is constantly evolving. There's a huge variety of jobs, and your choices include business/systems analyst, database development and administration, developer/programmer, hardware engineering, network engineering, software engineer, help desk and IT support, or networks and systems administration.

To find out more check out computing.eit.ac.nz

NZ Certificate in Computing (User Fundamentals) [Level 2]

FEE FREE

Get the basic computing skills essential for employment and future study. Learn about the computer and Microsoft Office suite in a project-based, flexible learning environment. The programme covers Word, Excel, Publisher and PowerPoint and is self-directed using a combination of online and workbook methods.

ENTRY REQUIREMENTS

This is an open entry programme which means no formal qualifications are required. You must be aged 16 or over, and you are required to have a reasonable reading level in order to cope with the programme and to carry out written instruction.

Length	Part-time	Start date	February, May, July and October
Fee	Fee FREE	Campus	Hawke's Bay, Tairāwhiti, Hastings, Waipukurau, Wairoa, Maraenui or study from home anywhere in New Zealand

NZ Certificate in Computing (Intermediate User) [Level 3]

FEE FREE

This builds upon the skills and knowledge gained in the NZ Certificate in Computing [Level 2]. You will gain computing skills at an intermediate level for entry into employment in business administration and computing. The programme also enhances readiness for further study and provides an entry into the Bachelor of Computing Systems.

ENTRY REQUIREMENTS

You must have a basic knowledge of computing, or successfully completed the National Certificate in Computing [Level 2]. You are required to have a reasonable reading level in order to cope with the programme and to carry out written instruction.

Length	Part-time	Start date	February, May, July and October
Fee	Fee FREE	Campus	Hawke's Bay, Tairāwhiti, Hastings, Waipukurau, Wairoa, Maraenui or study from home anywhere in New Zealand

NZ Certificate in Business (Administration and Technology) [Level 3]

This programme is ideal if you want to work in office administration. It gives you the essential skills and knowledge to work or gain employment, in a wide range of supervised general office administration roles in a variety of sectors. These may include: receptionist, data entry operator, front line customer service role, call or contact centre operator, secretary, office support worker. Great administrators are at the heart of a well-run office and this programme gives you the skills you need to take on the responsibility.

ENTRY REQUIREMENTS

NCEA Level 1 or an approved qualification at Level 1 or above. Please see website for full details. Or a Level 1 qualification with NCEA Level 1 numeracy and literacy or with life skills and/or work experience with NCEA Level 1 numeracy and literacy may also apply. An interview may be required.

Length	6 months full-time*	Start date	February and July
Fee	\$2,763 per 60 credit programme (approx) including course related costs	Campus	Hawke's Bay or Tairāwhiti

* Part-time study available

NZ Certificate in Business (Administration and Technology) [Level 4]

This programme is ideal if you want to work in office administration and executive support. It gives you the essential skills and knowledge to work, or gain employment, in a wide range of general office administration roles in a variety of sectors under broad guidance. These may include: a sole-charge role in a small business entity, senior receptionist, customer relationship role, personal assistant and secretary, lead administrator, front line customer service role, call or contact centre operator, office support worker, web administrator, service desk coordinator. Great administrators are at the heart of a well-run office and this programme gives you the skills you need to take on the responsibility.

ENTRY REQUIREMENTS

An approved qualification at Level 3 or above. Please see website for full details. Or with life skills and/or work experience with NCEA Level 2 numeracy and literacy may also apply. An interview may be required.

Length	6 months full-time*	Start date	February and July
Fee	\$2,763 per 60 credit programme (approx) including course related costs	Campus	Hawke's Bay

* Part-time study available

NZ Certificate in Information Technology Essentials [Level 4]

The New Zealand Certificate in Information Technology Essentials (NZCITE) [Level 4] is a nationally recognized full-time, 17 week programme (or equivalent part-time) which offers you stimulating technology studies and provides a pathway towards your professional qualification in the computing industry.

ENTRY REQUIREMENTS

New Zealand Certificate in Computing (Intermediate User)(Level 3), or evidence of relevant knowledge and experience, including appropriate literacy and numeracy and Digital Technologies assessment standards equivalent to NCEA (Level 2). In the latter situation the applicant is required to participate in an enrolment interview with the purpose of verifying the evidence.

Length	6 months full-time*	Start date	February and July
Fee	\$2,998 or \$749.50 per 15 credits course (approx)	Campus	Hawke's Bay or Tairāwhiti

* Part-time study available

Bachelor of Computing Systems [Level 7]

This programme will provide you with a thorough grounding in Information Technology and its application in the business environment. In addition to giving a broad computing education, you can specialise in one of three major strands: programming and systems development, technical computing*, or e-commerce and web design. You will undertake a major industry based project or internship, which provides an opportunity for you to demonstrate your potential to employers and provides a taste of "real world" computing.

ENTRY REQUIREMENTS

You must meet university entry requirements (see website for details). Approved foundation programmes include the NZ Certificate in IT Essentials [Level 4].

Length	3 years full-time*	Start date	February and July
Fee	\$5,996 per year (approx) depending on course selection	Campus	Hawke's Bay or Tairāwhiti**

* Part-time study available **Only the technical computing major is offered at Tairāwhiti.

Graduate Diploma in Information Technology [Level 7]

Get a sound knowledge of the Information Technology environment and its effective management. You will be able to analyse the needs of business, develop, advise and implement innovations leading to more efficient use of resources within a dynamic information technology environment.

ENTRY REQUIREMENTS

You need to have completed a degree or equivalent qualification and provide evidence of knowledge and skills in data storage and data manipulation, and Microsoft Office applications. If you do not meet the criteria but present evidence of ability to succeed (e.g. maturity, life experience, work experience and other study) you are welcome to apply.

Length	1 year full-time*	Start date	February and July
Fee	\$8,907 (approx)	Campus	Hawke's Bay

* Part-time study available

Postgraduate Diploma in Information Technology [Level 8]

This programme will enable computing degree graduates to build on existing knowledge and technical skills for employment in the areas of IT where there are recognised skills shortages within New Zealand and internationally. Graduates are able to think critically and have a number of high level skills in the IT field that can be applied in a wide range of situations.

ENTRY REQUIREMENTS

You must have a computing degree or equivalent qualification.

Length	1 year full-time*	Start date	February and July
Fee	\$8,907 per year (approx) depending on course selection	Campus	Hawke's Bay

* Part-time study available

Master of Information Technology [Level 9]

The overall aim of the programme is to enable students to develop advanced knowledge and skills in information and communication technology through intensive academic study, including advanced independent work, advanced practice, and applied IT research.

ENTRY REQUIREMENTS

You must have an IT or related degree or a postgraduate diploma in IT with a B pass or higher.

Length	18 months full-time (or 6 months if you already have EIT's Postgraduate Diploma in Information Technology)*	Start date	February and July
Fee	\$8,907 per year (approx) depending on course selection	Campus	Hawke's Bay

* Part-time study available

"Fashion at EIT gave me the confidence to grow creatively."

"The programme gave me the freedom to create what I loved and taught me how to believe in myself and my ability. Once I graduated it was clear that the skills and knowledge I learnt were on par with industry."

Brooke Walsh
Fashion Apparel graduate

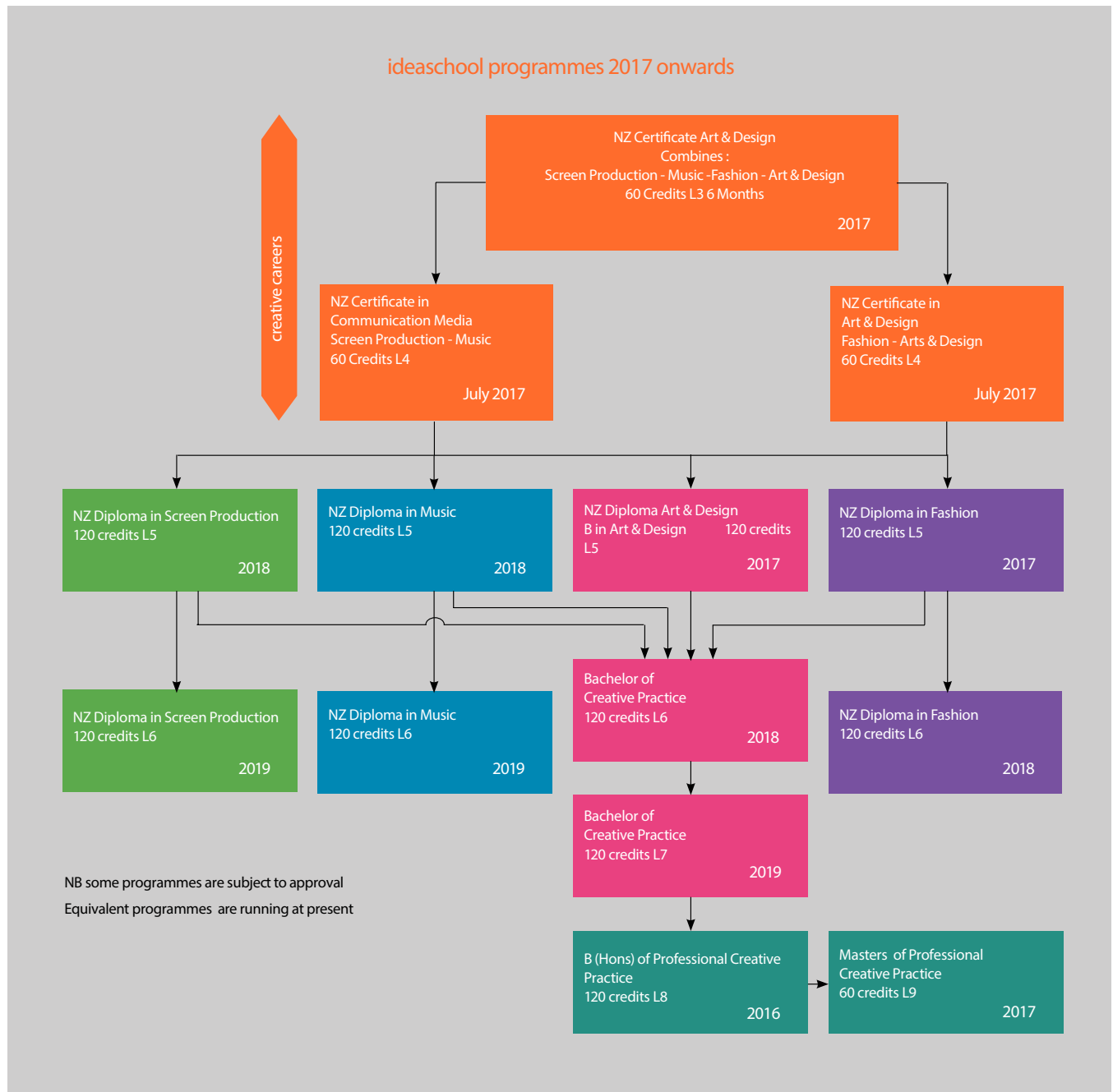
ideaschool

te kura ahu taonga

Pathway to Creative Careers

ideaschool runs all certificates and diplomas under the revised New Zealand Qualifications framework. The following diagram gives you a good idea of the pathways you can follow. The new structure has more entrance and exit points than previously, giving you more choice in the direction you want to follow in your creative career.

To find out more check out ideaschool.ac.nz



CREATIVE CAREERS

Pathway to Creative Careers [Level 3 & 4]

If you know you want a creative career in art & design, music, fashion or screen production, but haven't made up your mind which direction to follow, or don't have a portfolio, this is the programme for you. It is full of practical projects giving you a taste of all the creative fields. You will work individually and in groups to fulfil projects and investigate the myriad of opportunities in a creative career.

This programme consists of three New Zealand qualifications, two of which make a full year:

- **New Zealand Certificate in Arts and Design [Level 3]**
Semester One or Semester Two start, focused on art & design, music, fashion and screen production, then either:
- **Option 1: New Zealand Certificate in Arts and Design [Level 4]**
Semester Two, focused on Arts, Design and Fashion.
- **Option 2: New Zealand Certificate in Communication Media [Level 4]**
Semester Two, focused on Screen Production and Music.

Exiting at Level 3 with a certificate and entrance directly into Level 4 is possible.

ENTRY REQUIREMENTS

Please see website for details.

Length	1 year full-time*	Start date	February and July
Fee	\$3,137 per half year (approx)	Campus	Hawke's Bay or Tairāwhiti (Level 3 only)

* Part-time study available

NZ Diploma in Visual Arts and Design [Level 5]

This project-based programme is for people who want to have a creative career in arts and design. You will be developing your practical skills in individual and group projects to prepare you for a career in the creative industry. With your diploma completed successfully you can continue on to the Bachelor of Visual Arts and Design.

ENTRY REQUIREMENTS

Please see website for details.

Length	1 year full-time	Start date	February
Fee	\$6,118 (approx)	Campus	Hawke's Bay

Bachelor of Visual Arts and Design [Level 7]

Through engaging in a series of real life and in-house projects, utilising various creative disciplines including paint, sculpture, print, photography, graphic design and 3D design, you will get the skills, knowledge and attributes needed to think creatively and develop a career as a practicing visual artist and designer. In your second and third year you will have your own studio space with 24-7 access and you are provided with art supplies from our ideastore.

ENTRY REQUIREMENTS

You must have University Entrance or meet non-standard entry criteria. Details available on website. You will also be required to attend an interview and present a portfolio of work.

Length	3 years full-time*	Start date	February
Fee	\$6,490 per year (approx)	Campus	Hawke's Bay

* Part-time study available

FASHION

NZ Diploma in Fashion [Level 5]

This project-based programme is for people who want to have a creative career in the fashion design and creation industry. You will develop your practical skills during individual and group projects to prepare you for a career in the fashion industry. You could then continue to the New Zealand Diploma in Fashion Design [Level 6] or the Bachelor of Visual Arts and Design.

ENTRY REQUIREMENTS

Please see website for details.

Length	1 year full-time	Start date	February
Fee	\$6,782 (approx)	Campus	Hawke's Bay or Tairāwhiti

NZ Diploma in Fashion Design [Level 6]

(Subject to approval and accreditation)

You will further develop your practical design skills from Level 5. This project-based design programme is for people who want to have a creative career in the fashion design and creation industry. Work on individual and group projects to prepare you for your career.

ENTRY REQUIREMENTS

Please see website for details.

Length	1 year full-time	Start date	February
Fee	\$6,782 (approx)	Campus	Hawke's Bay

MUSIC

NZ Diploma in Music [Level 5]

(Subject to approval and accreditation)

Get a creative career in the music industry. Develop your practical skills within individual and group projects. You can then continue to the New Zealand Diploma in Music [Level 6] (starts in 2019 subject to approval and accreditation) or the Bachelor of Visual Arts and Design.

ENTRY REQUIREMENTS

Please see website for details.

Length	1 year full-time	Start date	February
Fee	\$6,000 (approx)	Campus	Hawke's Bay

SCREEN PRODUCTION

NZ Diploma in Screen Production [Level 5]

(Subject to approval and accreditation)

Get a creative career in the film, video and screen production industry. You will be developing your practical skills during individual and group projects to prepare you for a great career. You can then continue to the New Zealand Diploma in Screen Production [Level 6] (starts in 2019 subject to approval and accreditation) or the Bachelor of Visual Arts and Design.

ENTRY REQUIREMENTS

Please see website for details.

Length	1 year full-time	Start date	February
Fee	\$7,028 (approx)	Campus	Hawke's Bay

Te Hono ki Toi (Poutiri-ā-rangi) - Bachelor of Professional Creative Practice (Honours) [Level 8]

This programme is collaboratively offered by EIT's two iconic creative practice schools: ideaschool and Toihoukura, offering you an exclusive opportunity to engage with staff and students at both schools. It offers a unique perspective from both the European and Māori creative culture allowing a wide selection of media to be advanced.

It is designed to enable graduates and other artists to further their creative practice through guided reflection, research and professional practice. You will create an effective and professional body of creative work, make it publicly available and speak professionally about that work based on in-depth and broad research. Following completion of this honours programme, you may progress to Te Hono ki Toi (Poutiriao) - Master of Professional Creative Practice.

ENTRY REQUIREMENTS

You need an undergraduate degree in a creative practice with a B average or better; or provisional admittance may be provided. If English is not your first language, you must have an IELTS minimum score of 6.5 in all bands.

Length	1 year full-time*	Start date	February
Fee	\$7,065 (approx)	Campus	Hawke's Bay, Tairāwhiti or by distance with an on-campus component

* Part-time study available

Te Hono ki Toi (Poutiriao) - Master of Professional Creative Practice [Level 9]

This master's programme is usually combined with the Te Hono ki Toi Honours Level 8 programme (above). It is collaboratively offered by EIT's two iconic creative practice schools: Toihoukura and ideaschool, offering you an exclusive opportunity to engage with staff and students at both schools. It offers a unique perspective from both the European and Māori creative culture allowing a wide selection of media to be advanced.

You will have the opportunity to produce a body of creative work to a standard that develops, extends and refines prior professional practices, processes and knowledge. This will be achieved through research and critical evaluation to strengthen your creative practice while contextualizing your practice in relation to relevant communities, contemporary concepts, models theory, technologies and professional practice management techniques.

ENTRY REQUIREMENTS

A B average in a postgraduate qualification (Level 8) in a creative practice field. Alternate entry is available. If English is not your first language, you must have an IELTS minimum score of 6.5 in all bands.

Length	6 months full-time*	Start date	February
Fee	\$3,526 (approx). This does not include required Honours courses above	Campus	Hawke's Bay, Tairāwhiti or by distance with an on-campus component

* Part-time study available



ENGLISH LANGUAGE

A woman with curly brown hair is sitting at a table in a cafe. She is wearing a grey and white plaid jacket over a black shirt. She is looking towards the camera with a slight smile. In the background, there is a blurred view of the cafe interior, including a counter and some posters on the wall.

**"My sister-in-law had
studied at EIT and
recommended it to me."**

"I wanted to learn English at EIT because I think this is very important
for my professional life."

Luciene Freitas Mota
General English graduate from Brazil

ENGLISH LANGUAGE

Learning English can open doors to work, study and friendship. At EIT you'll be able to improve your English in well-equipped classrooms, where the focus is on interaction and conversation. You'll learn to 'live the language' as you develop your skills, taught by highly qualified and experienced teachers. You'll make full use of EIT's Language Laboratory, where the focus is on helping you become fluent in English. EIT is a registered British Council IELTS Testing Centre offering exams throughout the year.

YOUR CAREER OPPORTUNITIES

Reading, writing, listening to and speaking English effectively and confidently benefits you, no matter what your job or career. Being proficient in English helps create opportunities. In any workplace it's important to communicate, and having a good command of English will help you, now and in the future.

To find out more check out english.eit.ac.nz

FULL-TIME PROGRAMMES:

New Zealand Certificates in English Language (NZCEL) [Level 1-5]

FEE FREE*

Improve your English or prepare for study. As well as being in the classroom, you will go on study visits in Hawke's Bay. From Level 3 up, you may be able to go on to further study without having to complete an IELTS test.

Length	16 weeks per qualification full-time	Start date	February and July	Campus	Hawke's Bay
Fee	* Level 1 - 2 Fee FREE for Permanent Residents. Level 3 - 5. General = \$2,749. Academic = \$2,781.				

English Language Training Schemes [Level 1-5]

FEE FREE*

If you are unable to start in February or July, these are ideal. Your study will be the same as NZCEL, but you can choose the length of study time.

Length	Up to 8 weeks part-time	Start date	Contact EIT for start dates	Campus	Hawke's Bay
Fee	* Level 1 - 2 Fee FREE for Permanent Residents. Level 3 - 5 (for 4 weeks) \$687 (approx).				

PART-TIME PROGRAMMES:

IELTS Preparation Programme (Day and Evening Classes)

This will improve your English and your skills to take tests and to familiarise you with the IELTS test format.

ENTRY REQUIREMENTS

It is best if you have an intermediate or higher level of English, or are in NZCEL Level 3 or higher.

Length	Up to 8 weeks part-time	Start date	Contact EIT for start dates	Campus	Hawke's Bay
Fee	Day Class: 8 hours per week (Monday, Wednesday, Friday). \$481. Exam: \$385. Evening Class: 4 hours per week (Tuesday, Thursday). \$240. Exam: \$385. Fees are approximate.				

English for Living classes [Level 1 & 2]

FEE FREE*

Do you want to improve your English? The Level 1 and 2 courses will help you use English in daily life and improve your conversation skills.

Length	9 - 10 weeks	Start date	Contact EIT for start dates	Campus	Hawke's Bay
Fee	*Fee FREE for Permanent Residents				

HEALTH & SPORT SCIENCE



"Studying sport at EIT gave me the opportunity to do something that I love."

"If you are working in the industry that you are passionate about you don't work another day in your life."

Junior Armstrong

Bachelor of Recreation and Sport and Diploma Applied Business graduate
School Sport Team Leader at Sport Hawke's Bay

COMMUNITY HEALTH & WELLNESS

Qualified health professionals make a positive difference to New Zealand. At EIT there are many interesting study areas for you to choose from as part of our health and wellness programmes. You can study general health, disability and aged support, work and life skills, mental health and addiction support. EIT's community health and wellness programmes mix study, practical experience and theory. You'll study on campus, and also get experience through workplace placement in a wide range of community organisations.

YOUR CAREER OPPORTUNITIES

There are many highly rewarding jobs and careers working in community development, for not-for-profit or sports organisations, disability providers, addiction and support services, rest homes and residential community facilities.

To find out more check out health.eit.ac.nz

NZ Certificate in Skills for Living [Level 1]

FEE FREE

(Including a strand in Skills for Working)

This provides employment and life skills if you require intensive support with your learning. It focuses on developing and improving practical skills that will assist in independence for learning, working and living, enabling you to take a more active role in employment and the community.

ENTRY REQUIREMENTS

This is an open entry programme which means no formal academic qualifications are required. You must be aged 16 or over.

Length	2 years full-time	Start date	February
Fee	Fee FREE	Campus	Hawke's Bay

NZ Certificate in Health and Wellbeing (Support Work) [Level 3]

This programme prepares support workers to be safe, competent and accountable in assisting people of any age and disability within a variety of health care and community settings. This can also lead to further study opportunities in nursing, massage, sport or social services.

ENTRY REQUIREMENTS

You are required to have a reasonable reading level in order to cope with the programme and to carry out written instruction.

Length	17 weeks (3 days per week)*	Start date	February and July
Fee	\$923 (approx)	Campus	Hawke's Bay or Tairāwhiti Waipukurau or Wairoa (subject to demand)

* Part-time study available



NZ Certificate in Health and Wellbeing (Mental Health and Addiction Support) [Level 4]

Mental health and addiction support workers provide a variety of services in a diverse range of residential and community settings. They work with people who experience addictions, mental illness or disability, as well as their families. This qualification provides a first step towards a career in mental health and addiction.

ENTRY REQUIREMENTS

You need NCEA Level 1 literacy and numeracy, or provide evidence of achievement at an equivalent level.

Length	1 year full-time*	Start date	February
Fee	\$5,882 (approx)	Campus	Hawke's Bay

* Part-time study available

NZ Diploma in Health and Wellbeing (Mental Health) [Level 5]

Develop a high level of skills and competence in mental health and addiction support work. This is ideal for mental health and addiction support workers who have more seniority in the workplace, carry a higher level of responsibility and engage in more complex relationships with their clients.

ENTRY REQUIREMENTS

You need NCEA Level 2, or provide evidence of achievement at an equivalent level. You are expected to be already working or volunteering in this sector in order to complete the practical component of this programme, and normally will have completed a Certificate in Mental Health and Addiction Support, mental health support work and/or an equivalent programme in social services.

Length	1 year full-time*	Start date	February
Fee	\$5,882 (approx)**	Campus	Hawke's Bay

* Part-time study available ** You may qualify for a Ministry of Health training grant to reimburse some fee costs.

NZ Diploma in Addiction Studies (Applied) [Level 6]

Develop your level of skill and competence a step further in mental health support work. This is suitable for mental health support workers who have more seniority in the workplace, carry a higher level of responsibility and engage in more complex relationships with their clients.

ENTRY REQUIREMENTS

You need NCEA Level 3, or provide evidence of achievement at an equivalent level. You are expected to be already working or volunteering in this sector in order to complete the practical component of this programme, and normally will have completed a Certificate in Mental Health and Addiction Support, mental health support work and/ or an equivalent programme in social services.

Length	1 year full-time*	Start date	February
Fee	\$6,082 (approx)	Campus	Hawke's Bay

* Part-time study available

RELAXATION & REMEDIAL MASSAGE

Get first-hand experience with EIT's Relaxation and Remedial Massage programme. You can enter the Wellness and Relaxation programme to learn the foundation skills of massage therapy including relaxation and sport massage and techniques for all ages. You can then progress into the NZ Diploma in Remedial Massage and learn specialist techniques including neuromuscular therapy, trigger point massage, identifying dysfunction in clients and more. EIT's massage clinic "Revive" gives you the opportunity to work closely with lecturers, other students and the public, so you can practice your skills in a working clinic with your lecturers on-hand to help you.

YOUR CAREER OPPORTUNITIES

Students will gain the experience they need in the simulated workplace of EIT's "Revive" clinic to gain employment in a highly rewarding industry. Employment opportunities are available in a variety of healthcare, sport and recreation, and beauty therapy settings.

To find out more check out massage.eit.ac.nz

NZ Diploma in Wellness and Relaxation Massage [Level 5]

(Subject to approval and accreditation)

This programme provides practical and theoretical learning in wellness and relaxation massage. Get essential knowledge and skills in massage assessment and application, stress, nutrition, activity and health, human structure and function and the role of massage therapy and sport. You could then progress to the NZ Diploma in Remedial Massage.

ENTRY REQUIREMENTS

NCEA level 2 or provide evidence of achievement at an equivalent level. Applicants aged over 20 who can show evidence of ability to successfully achieve may be considered.

Length	1 year full-time*	Start date	February and July
Fee	\$6,084 (approx)	Campus	Hawke's Bay

* Part-time study available

NZ Diploma in Remedial Massage [Level 6]

(Subject to approval and accreditation)

Get advanced knowledge of massage through integrated theory and practice, which will enable you to select and carry out a range of therapeutic interventions for sport, rehabilitation and special population groups. You will advance your clinical assessment techniques to provide appropriate remedial massage therapy using neuromuscular therapy, physical performance techniques and gain an understanding of psychology and pathology.

ENTRY REQUIREMENTS

Completion of the NZ Diploma in Wellness and Relaxation Massage qualification or equivalent.

Length	1 year full-time*	Start date	February
Fee	\$5,195 (approx)	Campus	Hawke's Bay

* Part-time study available



"EIT provides an excellent opportunity to study for a qualification that supports your passion and provides excellent support throughout your learning. I enjoyed the practical application of concepts during the programme. Because our classes were small we had lots of one-on-one attention and always felt comfortable to question or discuss different viewpoints."

Sue Wakeling

Diploma in Therapeutic and Sport Massage graduate
Owner/Operator, Serenity Massage Therapy

SPORT, EXERCISE SCIENCE & HEALTH

Get a great career with EIT's programmes. You can get an introduction to anatomy, programme writing and the fitness industry with a Certificate in Health and Fitness. The diploma and degree lets you develop important skills, including exercise physiology, nutrition, sports psychology and much more. You'll get experience in the superb Pettigrew.Green Arena in Hawke's Bay and in local facilities in Tairāwhiti. The Pettigrew.Green Arena has a modern exercise science laboratory, lecture theatre, stadium, gym and massage clinic.

YOUR CAREER OPPORTUNITIES

EIT's programmes in sport, health and exercise can open the door to a variety of exciting and rewarding careers. Graduates can work in a diverse range of roles from health, fitness and conditioning in the gym environment, to sports performance, rehabilitation and lifestyle change in the wider health industry.

To find out more check out sport.eit.ac.nz

Certificate in Health and Fitness [Level 3]

(Under re-development)

Get an introduction to anatomy, programme writing and various aspects of the health and fitness industry. You will learn practical skills, initially with an individual focus, and as the programme continues, the focus shifts to working with clients and then working with group exercises. You could go on to gain employment in the health and fitness industry or continue on to higher level study. This programme is recognised by the Register of Exercise Professionals (REPS) at the levels of Foundation Level Exercise Assistant, Group Exercise Instructor, and Exercise Consultant (Level 1).

ENTRY REQUIREMENTS

This is an open entry programme which means no formal academic qualifications are required. You must be aged 16 or over. An interview for information sharing is recommended for all applicants.

Length	19 weeks full-time	Start date	February and July
Fee	\$2,892 (approx)	Campus	Hawke's Bay or Tairāwhiti

Diploma in Recreation and Sport [Level 5]

(Under re-development)

Actively participate in a range of sport and recreation activities to receive industry understanding, and gain knowledge of the structure and function of the human body to appreciate the relationship between nutrition, physical activity, and other personal health behaviours and health. You will be able to assess physical performance, apply exercise techniques and design recreation, sport and fitness programmes for a diverse population including people with special needs. You can go on to degree level study or start your career in the field of recreation, sport and health.

This programme is recognised by the Register of Exercise Professionals (REPS) at the levels of Foundation Level Exercise Assistant, Group Exercise Instructor, and Exercise Consultant (Level 1) and Personal Training.

ENTRY REQUIREMENTS

NCEA Level 2 or meet alternative entry criteria. See the website for more details.

Length	1 year full-time*	Start date	February and July
Fee	\$6,555 per year (approx)	Campus	Hawke's Bay

* Part-time study available



Mataeus Marsh and Dominic McGovan
Bachelor of Recreation and Sport
Hawks Scholarship Recipients

Bachelor of Recreation and Sport [Level 7]

(Under re-development)

This will enable you to enter employment in the sport, fitness, health or recreation industries with a sound knowledge of anatomy, physiology, exercise and sport science, sport coaching, health, recreation and business studies, as well as research and professional practice skills. This programme is recognised by the Register of Exercise Professionals (REPS) at the levels of Foundation Level Exercise Assistant, Group Exercise Instructor, and Exercise Consultant (Level 1) and Personal Training.

ENTRY REQUIREMENTS

You must meet university entry requirements (see website for details). Approved foundation programmes include the Certificate in Health Science, the Diploma in Recreation and Sport, or the Diploma in Wellness and Relaxation Massage.

Length	3 years full-time*	Start date	February and July
Fee	\$6,555 per year (approx)	Campus	Hawke's Bay

* Part-time study available

Postgraduate Certificate in Health Science [Level 8]

This offers health professionals, the opportunity to develop their skills of critical analysis, clinical and/or health service knowledge, and practice within their specific discipline area. The endorsement options are:

- Child and Family Health
- Diabetes Management
- Disease Management
- Elder Health
- Health Promotion
- Health Services Management
- Human Lactation and Breastfeeding
- Primary Health Care
- Professional Supervision

ENTRY REQUIREMENTS

You need an undergraduate degree in a health science / health discipline with a B average. If you do not meet the entry criteria for the postgraduate diploma, you may be admitted to the postgraduate certificate, and upon successful completion of two courses in the schedule to the regulations of the postgraduate certificate, gain admission to the postgraduate diploma. If English is not your first language, you need an IELTS score of at least 6.5, with no sub-set score lower than 6.0 or equivalent in one exam sitting.

Length	6 months full-time*	Start date	Start date varies depending endorsement
Fee	\$1,762 per 30 credit course (approx)	Campus	Blended learning or by distance with an on-campus component in Hawke's Bay

* Part-time study available

Postgraduate Diploma in Health Science [Level 8]

This programme offers health professionals the opportunity to advance their practice and develop their skills of critical analysis, clinical and/or health service knowledge, and practice within their specific discipline area.

The endorsement options are:

- Child and Family Health
- Diabetes Management
- Disease Management
- Elder Health
- Health Promotion
- Health Services Management
- Human Lactation and Breastfeeding
- Primary Health Care
- Professional Supervision
- RN Prescribing

ENTRY REQUIREMENTS

You need an undergraduate degree in a health science / health discipline with a B average. If you do not meet the entry criteria for the postgraduate diploma, you may be admitted to the postgraduate certificate, and upon successful completion of two courses in the schedule to the regulations of the postgraduate certificate, gain admission to the postgraduate diploma.

If English is not your first language, you need an IELTS score of at least 6.5, with no sub-set score lower than 6.0 or equivalent in one exam sitting.

Length	1 year full-time*	Start date	Start date varies depending on endorsement
Fee	\$1,762 per 30 credit course (approx)	Campus	Blended learning or by distance with an on-campus component in Hawke's Bay

* Part-time study available

Master of Health Science [Level 9]

This gives health practitioners and health managers from a broad range of health fields the opportunity to advance and expand their knowledge and scholarship in an interdisciplinary learning environment. You will develop skills of critical analysis, constructive synthesis, advanced practice and research within your discipline. Courses are designed around knowledge and research relating to key threads of health disparities and the needs of populations; ethical, legal and political dimensions of health policy and practice; and interdisciplinary practice to improve health care.

ENTRY REQUIREMENTS

You need an undergraduate degree in a health discipline with a B average or better, or a bachelors honours degree or a postgraduate certificate/diploma in a health field. If you don't, you may be admitted to the postgraduate certificate, and upon successful completion and in accordance with the regulations, gain admission to the Master of Health Science. If English is not your first language, you need IELTS score of at least 6.5 in all bands.

Length	18 months full-time*	Start date	Start date varies depending on course
Fee	\$1,762 per 30 credit course (approx)	Campus	Blended learning or by distance with an on-campus component in Hawke's Bay

* Part-time study available

Official education partner



NURSING & HEALTH SCIENCE



**"I feel like I can really
make a difference."**

"As a single mum of four children, I really appreciated the support network that the lecturers gave me while I was studying."

Nicole Lilburn
Bachelor of Nursing graduate

NURSING

Nursing is one of the most exciting and rewarding study areas available. You can study at EIT to become a registered nurse, and choose to go on to our postgraduate programmes. EIT offers a range of postgraduate nursing programmes, including Postgraduate Diploma in Health Science (Registered Nurse Prescribing) and Master of Nursing (Nurse Practitioner Pathway). Supportive and expert lecturers will help you gain knowledge and skills to become a registered or advanced practice nurse. You'll study at some of the best nursing teaching facilities in New Zealand, and you'll use state-of-the art technology as part of your studies, including well-equipped clinical simulation laboratories. EIT nursing graduates are highly sought after by employers.

YOUR CAREER OPPORTUNITIES

As a Registered Nurse, Clinical Nurse Specialist, Registered Nurse Prescriber or Nurse Practitioner your career will be highly rewarding, you'll experience challenges and variety as you make a positive difference in peoples lives.

To find out more check out nursing.eit.ac.nz

NZ Certificate in Study and Career Preparation [Level 4]

(Subject to approval and accreditation).

This qualification will give you an introduction to important skills and ideas, so you're ready to step up to higher level study, including at degree level. You'll learn the study and communication skills you need in the context of your field of interest. The courses you choose will get you ready to apply for entry into a range of diploma and degree programmes in the fields of health, including nursing and mental health support, social work and teaching.

If you choose not to carry on with study, you will have some broad knowledge and skills to enhance your employment prospects.

ENTRY REQUIREMENTS

Please see website for details.

Length	19 weeks full-time	Start date	February and July
Fee	\$2,862 (approx)	Campus	Hawke's Bay or Tairāwhiti

Certificate in Contemporary NZ Nursing Practice [Level 7]

This competency-based integrated theory and practice programme has been designed to meet two distinct areas of demand: New Zealand registered nurses wishing to return to clinical practice and overseas registered nurses who are required to successfully complete a competency-based programme in order to attain Nursing Council of New Zealand registration.

The skills and knowledge of registered nurses will be updated across the scope of nursing practice. You will have the opportunity to revise your nursing knowledge in order to achieve prescribed Nursing Council of New Zealand competencies.

ENTRY REQUIREMENTS

NZ applicants must provide evidence of registration as a registered nurse, with the Nursing Council of New Zealand.

International applicants please refer to EIT's International Prospectus.

If English is not your first language, you will be required to produce evidence of ability to speak, write and understand the English language. The assessment must have been completed within the past two years.

Length	6 weeks full-time	Start date	January, May, June/July and September/October
Fee	\$2,293 (approx)	Campus	Hawke's Bay

Bachelor of Nursing [Level 7]

This degree will enable you to enter practice as a registered nurse with a sound knowledge base of nursing theory, social sciences, biological sciences, research and professional practice skills. The programme provides a balance of theoretical studies, and nursing practice experiences which occur in a wide range of community and acute care settings. You will develop the understanding and skills needed to provide professional nursing care, promote health and develop as a nurse leader.

ENTRY REQUIREMENTS

You must meet university entry requirements and meet English language requirements if applicable (see website for details). Approved foundation programmes include the Certificate in Health Science, or Diploma in Therapeutic and Sport Massage.

Length	3 years full-time*	Start date	February and July
Fee	\$6,549 per year (approx)	Campus	Hawke's Bay or Tairāwhiti (February start only)

* Part-time study available

Postgraduate Certificate in Health Science [Level 8]

This offers health professionals, the opportunity to develop their skills of critical analysis, clinical and/or health service knowledge, and practice within their specific discipline area. The endorsement options are:

- Child and Family Health
- Diabetes Management
- Disease Management
- Elder Health
- Health Promotion
- Health Services Management
- Human Lactation and Breastfeeding
- Primary Health Care
- Professional Supervision

ENTRY REQUIREMENTS

You need an undergraduate degree in a health science / health discipline with a B average. If you do not meet the entry criteria for the postgraduate diploma, you may be admitted to the postgraduate certificate, and upon successful completion of two courses in the schedule to the regulations of the postgraduate certificate, gain admission to the postgraduate diploma. If English is not your first language, you need an IELTS score of at least 6.5, with no sub-set score lower than 6.0 or equivalent in one exam sitting.

Length	6 months full-time*	Start date	Start date varies depending endorsement
Fee	\$1,762 per 30 credit course (approx)	Campus	Blended learning or by distance with an on-campus component in Hawke's Bay

* Part-time study available



Postgraduate Diploma in Health Science [Level 8]

This programme offers health professionals the opportunity to advance their practice and develop their skills of critical analysis, clinical and/or health service knowledge, and practice within their specific discipline area.

The endorsement options are:

- Child and Family Health
- Diabetes Management
- Disease Management
- Elder Health
- Health Promotion
- Health Services Management
- Human Lactation and Breastfeeding
- Primary Health Care
- Professional Supervision
- RN Prescribing

ENTRY REQUIREMENTS

You need an undergraduate degree in a health science / health discipline with a B average. If you do not meet the entry criteria for the postgraduate diploma, you may be admitted to the postgraduate certificate, and upon successful completion of two courses in the schedule to the regulations of the postgraduate certificate, gain admission to the postgraduate diploma.

If English is not your first language, you need an IELTS score of at least 6.5, with no sub-set score lower than 6.0 or equivalent in one exam sitting.

Length	1 year full-time*	Start date	Start date varies depending on endorsement
Fee	\$1,762 per 30 credit course (approx)	Campus	Blended learning or by distance with an on-campus component in Hawke's Bay

* Part-time study available

Postgraduate Diploma in Health Science (Registered Nurse Prescribing) [Level 8]

This qualification is accredited by the Nursing Council of New Zealand. Registered Nurses working with people with long term conditions and in specialty teams may be eligible to enrol in this programme. There are four core courses within the qualification, the final course being a prescribing practicum where Registered Nurses work with their approved prescribing mentor. Enquiries are welcome from applicants considering this career pathway.

ENTRY REQUIREMENTS

Applicants must be a Registered Nurse with the Nursing Council of New Zealand with a current annual practising certificate. You need a minimum of three years' experience in their area of prescribing practice, have employer support to enrol and have a B grade average in the prerequisite courses in order to enrol in the Registered Nurse Prescribing course.

Length	1 year full-time*	Start date	Start date varies depending on endorsement
Fee	\$1,762 per 30 credit course (approx)	Campus	Blended learning or by distance with an on-campus component in Hawke's Bay

* Part-time study available





Master of Nursing [Level 9]

This programme is designed to prepare you for advanced practice roles, including Nurse Practitioner, and is approved by the Nursing Council of New Zealand as a "master's with a clinical focus, including the content for preparation for nurse prescribing". In this programme nurses develop advanced nursing knowledge, skills of critical analysis, constructive synthesis, advanced practice and research skills within your specialty area.

ENTRY REQUIREMENTS

You must be a registered nurse with a current annual practising certificate with the Nursing Council of New Zealand and have an undergraduate degree in a health science/health discipline with a B pass or better. If you do not, you may be provisionally admitted to the Postgraduate Certificate in Health Science, and on successful completion of two courses from the Master of Nursing Schedule (with a B average grade), gain admission to the Master of Nursing programme.

If English is not your first language, you need an IELTS of at least 6.5 in all bands.

Length	2 years full-time*	Start date	Start date varies depending on endorsement
Fee	\$1,762 per 30 credit course (approx)	Campus	Blended learning or by distance with an on-campus component in Hawke's Bay

* Part-time study available

Master of Health Science [Level 9]

This gives health practitioners and health managers from a broad range of health fields the opportunity to advance and expand their knowledge and scholarship in an interdisciplinary learning environment. You will develop skills of critical analysis, constructive synthesis, advanced practice and research within your discipline. Courses are designed around knowledge and research relating to key threads of health disparities and the needs of populations; ethical, legal and political dimensions of health policy and practice; and interdisciplinary practice to improve health care.

ENTRY REQUIREMENTS

You need an undergraduate degree in a health discipline with a B average or better, or a bachelors honours degree or a postgraduate certificate/diploma in a health field. If you don't, you may be admitted to the postgraduate certificate, and upon successful completion and in accordance with the regulations, gain admission to the Master of Health Science. If English is not your first language, you need IELTS score of at least 6.5 in all bands.

Length	18 months full-time*	Start date	Start date varies depending on course
Fee	\$1,762 per 30 credit course (approx)	Campus	Blended learning or by distance with an on-campus component in Hawke's Bay

* Part-time study available

HOSPITALITY



scholars | fully licensed training
restaurant

TORU 
RESTAURANT

**"The facilities at
EIT are fantastic."**

"The kitchens are designed really well so that they mirror the industry. So when you leave EIT there is no big difference in working in the EIT kitchen and going to a real world kitchen."

Andrea Davis

Diploma in Professional Chef Practice graduate
Mister D

Welcome to some of New Zealand's best hospitality programmes. EIT can equip you to become a hospitality professional, ready to take on a variety of roles. You can also attain internationally recognised City and Guilds qualifications, which can help open doors worldwide. You'll be given plenty of experience in EIT's superb modern training and production kitchens. You'll work in fully licensed training restaurants and cafés, where you'll gain invaluable experience preparing and serving lunch and dinner for paying diners.

YOUR CAREER OPPORTUNITIES

You could become a barista, café owner, wait staff in a five-star hotel, or manage front of house operations. How about training to be a fully qualified chef, and working in a top restaurant? There are many exciting job and career opportunities, whether you choose to work close to home or overseas.

To find out more check out hospitality.eit.ac.nz

NZ Certificate in Food and Beverage Service [Level 3] Café and Restaurant Skills

You will gain knowledge and skills in restaurant, bar, wine, kitchen and barista service while training in a modern, fully-licensed restaurant serving the public. You can build upon these skills by continuing onto the Level 4 programme which focuses on professional restaurant service.

ENTRY REQUIREMENTS

If you are aged under 20, you need to have achieved NCEA Level 1 literacy and numeracy requirements, or provide evidence of achievement at a higher level. If you are aged over 20 you need to demonstrate in a letter of application, an interest in the industry and competence in English.

If English is not your first language, you need an IELTS score of 5.5 Academic in all bands or higher.

Length	18 weeks full-time*	Start date	February and July
Fee	\$3,092 (approx)	Campus	Hawke's Bay or Tairāwhiti

* Part-time study available

NZ Certificate in Food and Beverage Service [Level 4] Professional Restaurant Service

Pursue a professional career in a restaurant or hotel management with a focus on fantastic customer service. Develop specialised restaurant, bar events and wine knowledge, and skills in wine and food matching plus a Bar Manager's Certificate. You will also gain a City and Guilds Diploma in Food and Beverage Service.

ENTRY REQUIREMENTS

If you are aged under 20 you need to achieve the NCEA Level 1 literacy and numeracy requirements, or provide evidence of achievement at a higher level, or have completed the New Zealand Certificate in Food and Beverage Service [Level 3] or equivalent.

If you are aged over 20 you need to demonstrate, in a letter of application, an interest in the industry and competence in English, or have completed the New Zealand Certificate in Food and Beverage Service [Level 3] or equivalent.

If English is not your first language, you need an IELTS score of 5.5 Academic in all bands or higher.

Length	18 weeks full-time	Start date	July
Fee	\$3,156 (approx)	Campus	Hawke's Bay



NZ Certificate in Cookery [Level 3]

Begin your career in the hospitality industry, and get work as a chef in a junior position producing basic dishes in a commercial kitchen, or go on to further study.

ENTRY REQUIREMENTS

If you are aged under 20 you need to achieve the NCEA Level 1 literacy and numeracy requirements, or evidence of achievement at a higher level.

If you are aged over 20 and do not meet this criteria, you will need to demonstrate motivation, commitment to the industry and evidence of ability to succeed. A personal interview may be part of the selection process.

If English is not your first language, you need an IELTS score of 5.5 Academic in all bands or higher.

You will be required to cook with and consume all types of meat. If you are vegetarian, please talk to us before applying.

Length	18 weeks full-time*	Start date	July
Fee	\$3,472 (approx)	Campus	Hawke's Bay or Tairāwhiti

* Part-time study available

NZ Certificate in Cookery [Level 4]

Become able to operate, with supervisory and some management responsibilities, in a kitchen environment of a typical service outlet. You will also gain the City & Guilds Diploma in Food Preparation & Service.

ENTRY REQUIREMENTS

You must have either the New Zealand Certificate in Hospitality [Level 2], the National Certificate in Hospitality [Level 3], the New Zealand Certificate in Cookery [Level 3], or completed the EIT Culinary Concepts course, or have the City and Guilds Certificate in Food Preparation and Cooking.

If you have prior learning, or industry experience and/or other training, you need to apply for recognition before enrolling. A personal interview may be part of the selection process.

If English is not your first language, you need an IELTS score of 5.5 Academic in all bands or higher.

You will be required to cook with and consume all types of meat. If you are vegetarian, please talk to us before applying.

Length	1 year full-time	Start date	March The prerequisite course, EIT Culinary Concepts, starts February (if required)
Fee	\$7,473 (approx)	Campus	Hawke's Bay or Tairāwhiti

NZ Diploma in Cookery (Advanced) [Level 5]

Get a professional qualification in the hospitality industry. You will be able to operate, with supervisory and some management responsibilities, in a kitchen environment of a typical service outlet. This programme incorporates two specialised strands to choose from.

Patisserie: including breads, pastry, desserts and cakes. Includes City & Guild Diploma in Patisserie.

Cookery: including global cuisine, modern cooking techniques, menu planning and costing, and charcuterie. Includes City & Guild Advanced Diploma in Food Preparation and Cookery.

ENTRY REQUIREMENTS

You must have completed the National Certificate in Hospitality (Cookery) [Level 4] or the New Zealand Certificate in Cookery [Level 4]. You can apply for recognition of prior learning for these certificates, through industry experience and/or completion of other recognised training. A personal interview may be part of the selection process.

If English is not your first language, you need an IELTS score of 5.5 Academic in all bands or higher.

You will be required to cook with and consume all types of meat. If you are vegetarian, please talk to us before applying.

Length	1 year full-time	Start date	February
Fee	\$6,728 (approx)	Campus	Hawke's Bay

NZ Certificate in Baking [Level 4]

The New Zealand Certificate in Baking Level 4 will cover the basic skills needed for working in bakeries, from artisan bakehouses through to supermarkets. Work experience is a key part of your study.

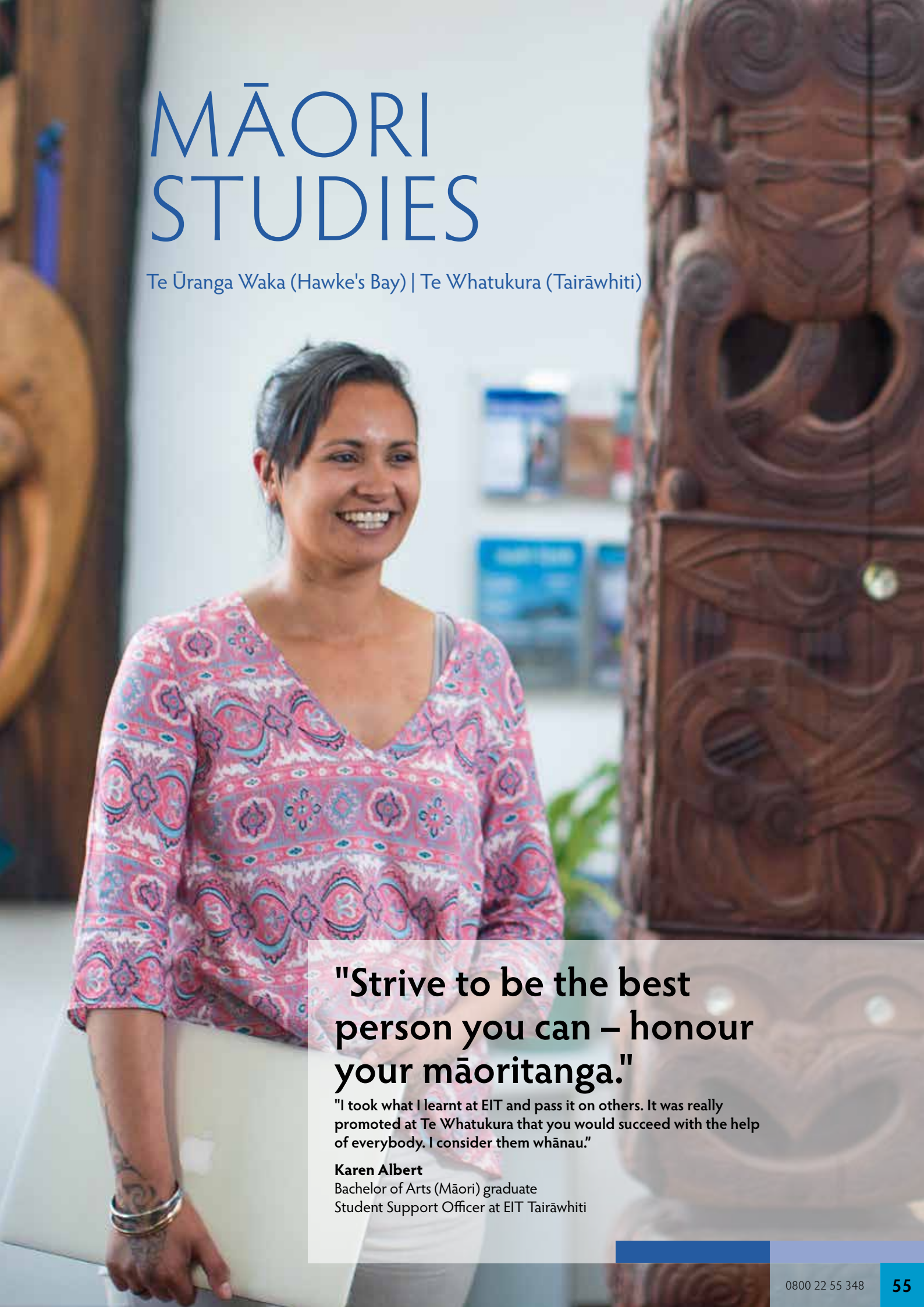
ENTRY REQUIREMENTS

If you are aged under 20, you need to have achieved NCEA Level 1 literacy and numeracy requirements, or provide evidence of achievement at a higher level. If you are aged over 20 you need to demonstrate in a letter of application, an interest in the industry and competence in English. If English is not your first language, you need an IELTS score of 5.5 Academic in all bands or higher.

Length	1 year full-time	Start date	March
Fee	\$7,473 (approx)	Campus	Hawke's Bay

MĀORI STUDIES

Te Ūranga Waka (Hawke's Bay) | Te Whatukura (Tairāwhiti)



"Strive to be the best person you can – honour your māoritanga."

"I took what I learnt at EIT and pass it on others. It was really promoted at Te Whatukura that you would succeed with the help of everybody. I consider them whānau."

Karen Albert

Bachelor of Arts (Māori) graduate
Student Support Officer at EIT Tairāwhiti

TE ŪRANGA WAKA | TE WHATUKURA

“Piki ake, kake ake i te toi huarewa, te ara o Tāwhaki, i piki ai ki runga”

The need to learn and speak the Māori language is greater than ever before.

Māori language is vital to New Zealand, and our identity. As Māori language becomes more widely used through kōhanga reo, primary schools and Kura Kaupapa Māori, parents are becoming more aware of the importance of keeping up with their children's knowledge of te reo Māori. Te reo Māori is a special taonga, to be shared with all New Zealanders.

At Te Ūranga Waka in Hawke's Bay and Te Whatukura in Te Tairāwhiti, our te reo studies offer qualifications from basic introductory level learning through to a specialised degree programme, and gives you the opportunity to become proficient in Māori customs, culture and research.

YOUR CAREER OPPORTUNITIES

You can work in government departments, hospital boards, teaching (kōhanga, primary, secondary, and tertiary), or work with local iwi as a liaison or policy advisor. You could work in television and radio as a reporter, scriptwriter, announcer or bilingual researcher. You can also take on key roles at your own marae and within your whānau, hapū, and iwi.

Many employers now prefer bilingual and bicultural employees, especially since te reo Māori became an official language of New Zealand.

For more information check out maori.eit.ac.nz

NZ Certificate in Te Reo Māori [Level 2] Te Pōkaitahi Reo Māori (Reo Rua) Te Kaupae 2

FEE FREE

This foundation qualification is intended for learners who have minimal command of te reo, as an additional language. Graduates will have the language skills required to communicate, with little support, in familiar everyday contexts, and in Māori environments where they feel comfortable. Successful completion of this certificate allows students to enrol in the Level 3 programme.

ENTRY REQUIREMENTS

This is an open entry programme which means no formal qualifications are required. You must be aged 16 or over.

Length	17 weeks full-time day classes*	Start date	February and July
Fee	Fee FREE	Campus	Hawke's Bay, Tairāwhiti, Wānanga, community venues or your workplace

* Night classes and weekend wānanga available

NZ Certificate in Te Reo Māori [Level 3] Te Pōkaitahi Reo Māori (Reo Rua) Te Kaupae 3

FEE FREE

This qualification is intended for learners who have intermediate-level understanding of, and ability in the use of, te reo. Graduates will have the skills and knowledge to communicate in te reo with some independence and confidence in everyday whānau, marae, social/community, workplace and/or academic contexts; and in Māori environments where they feel comfortable. Successful completion of this certificate allows students to enrol in the Level 4 programme.

ENTRY REQUIREMENTS

You must have completed the approved foundation programme, NZ Certificate in Te Reo Māori [Level 2] or have an equivalent qualification.

Length	17 weeks full-time day classes*	Start date	February and July
Fee	Fee FREE	Campus	Hawke's Bay, Tairāwhiti, Wānanga, community venues or your workplace

* Night classes and weekend wānanga available

NZ Certificate in Te Reo Me Ngā Tikānga [Level 4] Te Tohu Tauihu (Kaupae 4)

FEE FREE

(Subject to approval and accreditation).

This qualification is for graduates of the Level 3 programme who wish to further develop their knowledge of the Māori language, and marae customs and practices. There will be a focus on speaking te reo Māori and applying it in everyday life, and on the marae ātea. Practical experience in leadership roles will occur in the second half of this year long programme. Successful completion of this certificate allows students to enrol in the Level 5 Diploma and/or the Bachelor of Arts (Māori) programme.

ENTRY REQUIREMENTS

You must have completed the NZ Certificate in Te Reo Māori [Level 3] or have an equivalent qualification.

Length	19 weeks full-time day classes*	Start date	February and July
Fee	Fee FREE	Campus	Hawke's Bay, Tairāwhiti, Wānanga, community venues or your workplace

* Night classes and weekend wānanga available

Bachelor of Arts (Māori) Te Whakangungutanga ki Ngā Tāiro a Kupe [Level 7]

Pursue a professional career in a variety of fields. This programme is designed to give you proficiency in Māori language, customs and culture to enhance your career prospects and social standing within your community. Compulsory papers in Māori language and marae customs and practices form the basis of the degree major and are taught mainly in Māori. Other papers allow you to access a wide range of options, including Māori performing arts, research, Māori beliefs and Māori music. These are taught bilingually.

ENTRY REQUIREMENTS

You must meet standard university entry requirements and attend an interview prior to acceptance.

Approved foundation programmes include the EIT Certificate in Māori Studies [Level 4] and the new NZ Certificate in Te Reo Me Ngā Tikānga [Level 4].

Length	3 years full-time*	Start date	February and July
Fee	\$663 per 15 credit course (approx). \$1,325 per 30 credit course (approx)	Campus	Hawke's Bay or Tairāwhiti

* Part-time study available

Bachelor of Arts Honours (Māori) Te Pikitanga ki Awarua [Level 8]

Kua neke atu i te toru tekau tau a Te Ūranga Waka e whakaako ana i te reo Māori me ōna tikanga katoa, ka mutu e hia mano taura kua ako ki te kōrero Māori i konei. Ko te tohu e kīia nei 'Te Pikitanga ki Awarua' he tohu Hōnore, he tohu whakapakari i a koe anō. Ko te mahi rangahau te mahi matua, ā, e aro ana ki te kōunga o te reo Māori kai te whāngaihia. He kaha hoki tā rātau rangahau i ngā taera reo o te motu, otirā, ngā kaupapa katoa o te iwi Māori.

Get in-depth knowledge of the Māori language, including research and those issues affecting Māori society, both historical and contemporary, and play your part in shaping a positive social, political and economic future for Aotearoa.

ENTRY REQUIREMENTS

You need a minimum of a B+ average in Year 3 of the Bachelor of Arts (Māori), or a bachelor's degree in arts, humanities, social sciences, languages, teaching, performing arts or creative arts with a B pass or above in the degree major, or the equivalent of a bachelor's degree, such as an extended programme of learning to the equivalent of NZQA Level 7, with a high level of academic achievement and **for both of the above, a level of te reo Māori equivalent to a B+ average in Year 3 of the Bachelor of Arts (Māori).**

Length	1 year full-time*	Start date	February and July
Fee	\$5,296 (approx)	Campus	Hawke's Bay, Tairāwhiti or online

* Part-time study available

PROFESSIONAL PRACTICE



Te Tohu Tītohu mō Te Aka Whakaaroaro: Postgraduate Diploma in Professional Practice Te Tohu Paerua mō Te Aka Whakaaroaro: Master of Professional Practice [Level 8-9]

Are you looking for an opportunity to reflect on and develop your professional practice? These postgraduate programmes are for people whose primary work is with people: social workers, teachers, community/iwi development practitioners, counsellors, health practitioners and others working in fields where understanding customs, beliefs, values and language is essential.

Features of the programmes:

- Focus on your own practice developments and passions
- Critically reflect on your own practice strengths, weaknesses, challenges and areas for expansion
- Flexible delivery (block wānanga and online learning)
- Commitment to mātauranga Māori
- Collaborative interdisciplinary study with others whose practice is in socio-cultural fields.

ENTRY REQUIREMENTS

An undergraduate degree or level 7 graduate diploma in a socio-cultural field. Engagement in some form of socio-cultural practice is expected.

Length	Post-graduate 1 year full-time. Master 18 months full-time*	Start date	February
Fee	\$1960 per 30 credit course (approx)	Campus	Hawke's Bay - on campus and blended delivery

* Part-time study available

TOIHOUKURA



"I can do the work I love, which is art, in a whānau environment at Toihoukura."

"I get to research and discover all the things that make me a Māori artist by connecting to my history through my own stories. There is no other place that I would choose to take this journey!"

Roimata Sinclair

Bachelor of Māori Visual Arts (Te Toi o Ngā Rangi) student

TOIHOUKURA

Toihoukura! Toihouora e!

Toihoukura – Enriching Lives!

Toihoukura is a specialist school of contemporary Māori visual arts that looks to the past to shape the future of art in Aotearoa/New Zealand and globally. It runs its unique, world-class programmes primarily from EIT's Tairāwhiti campus.

The school has an excellent complement of tutors which is headed by Ahorangi (Professor) Derek Lardelli, renowned tā moko and multimedia artist and Ahonuku (Associate Professor) Steve Gibbs who specialises in painting. Both have a long history and association with networks of indigenous artists nationally and internationally. Erena Koopu (painting/performing arts), Ruth Smith (toi reo/art language and traditional narratives), Makarini Solomon (tā moko/multimedia), and an array of practicing artists and experts within the creative industries contribute to an exceptional learning experience for students throughout their studies.

You will be encouraged to guide your own direction, vision and independence about cultural expectations and conditions, and will develop a strong sense of imagery related to your ancestral whakapapa. Studying at Toihoukura is a holistic experience in learning to create art that finds its origins in Te Ao Māori through traditional information and thought, which is then conveyed in a contemporary format for the future.

YOUR CAREER OPPORTUNITIES

Since Toihoukura was established, over 20 years ago, graduates have progressed into careers as art teachers, successful self-employed practicing artists, cultural advisors, gallery curators and more.

To find out more check out toihoukura.eit.ac.nz

Certificate in Māori Visual Arts (Foundation) [Level 4]

FEE FREE

This programme is designed specifically to help you pursue your artistic aspirations through practical experience. If you have a desire to grow your art knowledge, design concepts and gain skills in a creative environment, this certificate is ideal. Successful completion of this programme can pathway you into Te Toi o Ngā Rangi - Bachelor of Māori Visual Arts. You will be exposed to a wide range of art mediums by tutors who are well respected in their fields.

ENTRY REQUIREMENTS

An interview with the principal tutor is required for all applicants. You will require a minimum of 8 credits at NCEA Level 1 from any literacy sub field or domain. These skills can be assessed in English and/or te reo Māori. Those who do not meet the above criteria but have an NZQA qualification at an equivalent or higher level that demonstrates achievement in literacy may apply. If you are over 20 years old and have life skills and/or work experience, and do not meet these entry requirements but have the equivalent ability and experience, you are encouraged to apply. If English is not your first language, you need an IELTS score of 5.5 Academic in all bands or higher.

Length	1 year full-time	Start date	February
Fee	Fee FREE	Campus	Tairāwhiti

Certificate in Studio Workshop Studies (Art and Design Māori) [Level 6]

This is a predominantly self-directed programme in practical art and design. You will be able to access resources and studio space which may not be readily available to you otherwise, with tutor guidance and support as required. Subject areas include research, studio practice and professional practice/exhibition. You will set agreed milestone and dates with your tutor for assessment and progress reports throughout the year.

ENTRY REQUIREMENTS

You must have university entrance or an art qualification, or proven experience as a practising artist. For full entry criteria please see website.

Length	34 weeks full-time	Start date	February
Fee	\$6,441 (approx)	Campus	Tairāwhiti

Bachelor of Māori Visual Arts Te Toi o Ngā Rangi [Level 7]

Te Toi o Ngā Rangi enables students at any stage of their exploration of painting, drawing, sculpture, design, weaving or other visual arts to develop further knowledge and skills in the world of Māori contemporary arts.

You will be welcomed into a whānau environment and supported by the Toi Houkura team of tutors and support staff. Led by Erena Koopu and supported by internationally renowned artists, Ahorangi (Professor) Derek Lardelli and Ahonuku (Associate Professor) Steve Gibbs, the team includes other internationally known artists, as well as artists emerging on the national and international stage.

The broad-based programme enables you to develop practical skills, inspires creativity and introduces you to a range of visual arts with a view towards specialisation.

Graduates of Te Toi o Ngā Rangi have found success in the creative industries including national and international art internships and residencies, major art commissions and self-employment as practicing artists. They have also made their way into art related areas such as teaching, museum curatorships, and iwi/hapū/whānau projects. The formation of art education programmes run by graduates within local communities are becoming more prominent, and are a living illustration of what Toi Houkura teaches.

ENTRY REQUIREMENTS

You must have university entrance or have successfully completed the Certificate in Māori Visual Arts (Foundation) [Level 4]. For discretionary entrance, provisional entrance, special admission, or admission at entrance level with credit, based on previous tertiary study, please see website.

Length	3 years full-time	Start date	February
Fee	\$6,558 per year (approx)	Campus	Tairāwhiti. On-site and offsite Wānanga

* Part-time study available

Te Ara Pourewa – Graduate Diploma in Heritage and Museum Studies [Level 7]

Protect, preserve and elevate taonga Māori, and prepare for a career as kaitiaki taonga (curator), kaitiaki pūranga (archivist), kaiatawhai whakaora taonga (conservator), pouherenga kōrero o-mua (historian), or kaihangarau whakakite (exhibition technician); as well as employment opportunities in the wider sector, including iwi organisations, government departments, education and heritage organisations such as NZ Historic Places Trust, libraries, and galleries.

ENTRY REQUIREMENTS

You need an undergraduate degree, preferably in te reo Māori, visual art and design, Māori traditional and contemporary arts, Māori media studies or social sciences. Applicants with undergraduate degrees in other disciplines will be considered; or you must be able to demonstrate equivalent educational and/or professional experience. If English is not your first language, you must have an IELTS minimum score of 6.5 in all bands.

Length	1 year full-time*	Start date	February
Fee	\$5,900 (approx)	Campus	Tairāwhiti (blended, online, Wānanga and internship)

* Part-time study available

Te Hono ki Toi (Poutiri-ā-rangi) - Bachelor of Professional Creative Practice (Honours) [Level 8]

This programme is collaboratively offered by EIT's two iconic creative practice schools: ideaschool and Toi Houkura, offering you an exclusive opportunity to engage with staff and students at both schools. It offers a unique perspective from both the European and Māori creative culture allowing a wide selection of media to be advanced.

It is designed to enable graduates and other artists to further their creative practice through guided reflection, research and professional practice. You will create an effective and professional body of creative work, make it publicly available and speak professionally about that work based on in-depth and broad research. Following completion of this honours programme, you may progress to Te Hono ki Toi (Poutiriao) - Master of Professional Creative Practice.

ENTRY REQUIREMENTS

You need an undergraduate degree in a creative practice with a B average or better; or provisional admittance may be provided. If English is not your first language, you must have an IELTS minimum score of 6.5 in all bands.

Length	1 year full-time*	Start date	February
Fee	\$7,065 (approx)	Campus	Hawke's Bay, Tairāwhiti or by distance with an on-campus component

* Part-time study available

Te Hono ki Toi (Poutiriao) - Master of Professional Creative Practice [Level 9]

This programme is collaboratively offered by EIT's two iconic creative practice schools: Toi Houkura and ideaschool, offering you an exclusive opportunity to engage with staff and students at both schools. It offers a unique perspective from both the European and Māori creative culture allowing a wide selection of media to be advanced.

You will have the opportunity to create a body of creative work to a standard that develops, extends and refines prior professional practices, processes and knowledge. This will be achieved through research and critical evaluation to strengthen your creative practice while contextualizing your practice in relation to relevant communities, contemporary concepts, models theory, technologies and professional practice management techniques.

ENTRY REQUIREMENTS

An undergraduate degree in a creative practice with a B average or better, or a B average in a postgraduate qualification (Level 8) in a creative practice field. Alternate entry is available. If English is not your first language, you must have an IELTS minimum score of 6.5 in all bands.

Length	6 months full-time*	Start date	February
Fee	\$3,526 (approx). This does not include required Honours courses above	Campus	Tairāwhiti, Hawke's Bay or by distance with an on-campus component

* Part-time study available

PRIMARY INDUSTRIES



"I think horticulture and EIT go hand in hand."

"The course is amazing, it is completely organic focused and I had a really big interest in permaculture and a new way of growing food. The small campus here was like studying amongst the family. The garden and the facilities were all beautiful. The lecturers did a really good job of supporting us all."

Aiden Marsh

Certificate in Sustainable Horticulture (Sustainable Lifestyle) [Level 3] graduate
Native Garden Nursery, Gisborne

AGRICULTURE

Gain the skills and knowledge that will provide you with a career in the agricultural sector. EIT delivers a range of qualifications targeted at the agricultural sector. You will gain skills in stock handling, vehicles and machinery, fencing, soils and pastures. Engage with agricultural companies that EIT works closely with, and benefit from learning with our tutors that know the industry.

YOUR CAREER OPPORTUNITIES

The agricultural industry continues to grow and develop. As a qualified graduate you will be recognised as a skilled individual that has industry relevant skills. EIT's qualifications are designed to provide pathways irrespective of your initial skill level or knowledge. This could be as a farm assistant or contractor, through to a management or supervisory role across a variety of agricultural careers.

To find out more check out agriculture.eit.ac.nz

NZ Certificate in Primary Industry Skills (Agriculture) [Level 2]

FEE FREE

Build your practical skills with this hands-on entry level programme. You will develop your knowledge in a working farm environment that will give you an introduction to basic farming skills with an emphasis on health and safety in the workplace. As a graduate of this programme you can pathway into the variety of level 3 programmes on offer.

ENTRY REQUIREMENTS

This is an open entry qualification which means no formal qualifications are required. You must be aged 16 or over and be physically able to complete the programme specific outcomes.

Length	12 weeks full-time*	Start date	Various start dates throughout year
Fee	Fee FREE	Campus	Hawke's Bay, Tairāwhiti or EIT Regional Learning Centres

* Part-time study available

NZ Certificate in Agriculture [Level 3] (Vehicles, Machinery and Infrastructure)

FEE FREE

Technical skills are essential for anyone interested in working in the primary industry sector. Qualified and competent machine operators, agri-vehicle drivers and fencers are highly sought after. This qualification will give you the skills to operate and maintain a range of vehicles and machinery and the practical skills to build and maintain infrastructure within the agricultural industry.

ENTRY REQUIREMENTS

NCEA Level 1, or literacy and numeracy abilities equivalent to NCEA Level 1 with either a qualification at Level 1 or evidence of relevant knowledge and experience. An interview may be part of the application process.

Length	13 weeks full-time*	Start date	Various start dates throughout year
Fee	Fee FREE	Campus	Hawke's Bay, Tairāwhiti or EIT Regional Learning Centres

* Part-time study available



EIT works in partnership with Taratahi Agricultural Training Centre to deliver this qualification in Hawke's Bay.

NZ Certificate in Agriculture (Farming Systems) [Level 3]

This qualification will provide you with the ability to access new agricultural technologies that will assist you to understand key farming ideas. On completion of the programme you will be able to provide input into sustainable practices and day-to-day decisions that improve farm performance and are underpinned by safe work practices.



EIT works in partnership with Taratahi Agricultural Training Centre to deliver this qualification in Hawke's Bay.

ENTRY REQUIREMENTS

NCEA Level 1, or literacy and numeracy abilities equivalent to NCEA Level 1 with either a qualification at Level 1 or evidence of relevant knowledge and experience. An interview may be part of the application process.

Length	28 weeks full-time*	Start date	February, May and October
Fee	\$3895** (approx)	Campus	Hawke's Bay, Tairāwhiti and Waipukurau and Ruatoria Regional Learning Centres

* Part-time study available ** includes course related costs.

NZ Certificate in Agriculture (Breeding Livestock Farming) [Level 4]

This qualification is aimed at those wanting to move into a management level position within the agriculture sector. You will develop an in-depth understanding of farm report systems and be able to benchmark farm performance. This qualification also starts to explore the management of environmental impacts and day-to-day use of vehicles, plants and machinery.



EIT works in partnership with Taratahi Agricultural Training Centre to deliver this qualification in Hawke's Bay.

ENTRY REQUIREMENTS

NCEA Level 2, or literacy and numeracy abilities equivalent to NCEA Level 1 with either a qualification at Level 2 or evidence of relevant knowledge and experience. An interview may be part of the application process.

Length	41 weeks full-time*	Start date	February and July
Fee	\$5678** (approx)	Campus	Hawke's Bay or Tairāwhiti

* Part-time study available ** includes course related costs.

NZ Diploma in Agribusiness Management [Level 5]

This qualification is suited to all sectors within the primary industries, providing you with the knowledge to successfully manage an agribusiness operation. You will identify opportunities for your business or employer that will improve business performance. As a graduate you will be able to manage finances, staffing and natural and physical requirements.



EIT works in partnership with Primary ITO to deliver this qualification.

ENTRY REQUIREMENTS

NCEA Level 2, or successful completion of a Level 3 certificate, preferably in the primary industries subject area. For applicants 20 years or older without any of the above academic criteria, evidence of relevant knowledge and experience, and the ability to undertake tertiary study at Diploma level is required. In this case the applicant will be required to participate in an enrolment interview with the purpose of verifying the evidence.

Length	2.5 years part-time	Start date	February and July
Fee	\$700 per paper approx 5 papers within course	Campus	Hawke's Bay or Tairāwhiti

APICULTURE

The lucrative and rapidly expanding apiculture industry wants more Kiwis to become beekeepers. World markets can't get enough of NZ honey, especially Manuka honey. Demand for pollination services also continues to increase with NZ's primary industry dependent on the healthy pollination of fruit and crops for its survival.

YOUR CAREER OPPORTUNITIES

Beekeeping offers many exciting career opportunities, both in New Zealand and overseas. Opportunities include: hobbyist beekeeper, part time or full time employment through to ownership of a commercial beekeeping operation. Graduates of this qualification can work as an assistant beekeeper for a commercial operator or as an independent beekeeper with a small number of beehives.

NZ Certificate in Apiculture [Level 3]

If you have ever wanted to work in the apiculture industry on a small scale or are assisting in a commercial beekeeping operation then this programme is for you. On completion of this qualification you will own your own beehive and be able to work under limited supervision to maintain, manipulate and operate beehives to produce quality products and pollination services.

ENTRY REQUIREMENTS

NCEA Level 1, or literacy and numeracy abilities equivalent to NCEA Level 1 with either a qualification at Level 1 or evidence of relevant knowledge and experience. An interview may be part of the application process.

Length	40 weeks part-time	Start date	June
Fee	\$1100** (approx)	Campus	Tairāwhiti, Ruatoria or Wairoa Regional Learning Centres

** Includes course related costs.



FORESTRY

Achieve a qualification that will help you secure work in a growing industry. EIT offers programmes that will help you succeed in the forestry sector. You will develop entry level skills for the forestry industry including first aid, general requirements, vehicle operation and basic chainsaw operations through to the management and implementation of daily needs within the forestry industry.

YOUR CAREER OPPORTUNITIES

You will be part of an industry with serious potential, as well trained people will be crucial to the industry's success now and in the future. EIT has qualifications that will pathway you into a career in forestry, providing you with opportunities to meet potential employers. You could work as a part of logging crew, a heavy equipment operator or a technician.

To find out more check out forestry.eit.ac.nz

NZ Certificate in Forest Harvesting Operations [Level 3]

When you complete this qualification you will have the practical skills and knowledge for employment in one of the many forest harvesting or log scaling operations. You will be able to work under limited supervision to meet commercial productivity requirements. The programme will develop your understanding of health and safety, environmental and quality requirements.

ENTRY REQUIREMENTS

This is an open entry qualification which means no formal qualifications are required. You must be aged 16 or over and be physically able to complete the programme specific outcomes. Students may be required to comply with industry rules and regulations or those of a partner organisation.

Length	20 weeks full-time*	Start date	February and July
Fee	\$4620** (approx)	Campus	Hawke's Bay or Tairāwhiti

* Part-time study available ** Includes course related costs.

NZ Certificate in Forestry Operations [Level 3]

This qualification provides the opportunity to work outdoors in a production role in a commercial establishment or silviculture operation. As part of the programme you will develop your knowledge in environmental and personal health and safety requirements. You will learn how to safely operate a chainsaw and use this to apply basic tree felling techniques selected for thin to waste production.

ENTRY REQUIREMENTS

This is an open entry qualification which means no formal qualifications are required. You must be aged 16 or over and be physically able to complete the programme specific outcomes. Students may be required to comply with industry rules and regulations or those of a partner organisation.

Length	31 weeks full-time*	Start date	February
Fee	\$1657** (approx)	Campus	Hawke's Bay or Tairāwhiti

* Part-time study available ** Includes course related costs.



NZ Certificate in Commercial Road Transport [Level 3] (Heavy Vehicle Operator)

(Subject to approval and accreditation)

With this qualification you'll be eligible for a wide range of employment opportunities in any industry where vehicles are driven and in areas where a range of licence classes are required, such as the transport and logging industry, pack houses, couriers and bus driving. This qualification gives you the skills and knowledge to safely and competently operate rigid vehicles or heavy vehicle combinations.

ENTRY REQUIREMENTS

This is an open entry qualification which means no formal qualifications are required. You must be aged 16 or over and be physically able to complete the programme specific outcomes. You must hold a current Full Class 1 Licence for a minimum of six months and hold a medical certificate no older than 60 days for the level of licence required. Students may be required to comply with industry rules and regulations or those of a partner organisation.

Length	30 weeks full-time*	Start date	February and May
Fee	Please see website for details	Campus	Hawke's Bay or Tairāwhiti

* Part-time study available ** Includes course related costs.

NZ Certificate in Forest Harvesting Operations [Level 4]

Enhance your career opportunities as a skilled individual with the knowledge required to contribute to the planning of a harvesting operation. You will be able to develop, implement and evaluate a range of operational plans to provide efficiencies within your sector that take into consideration environmental and cultural situations. You will acquire the skills to be responsible for the safe and efficient procedures of forest harvesting plants and equipment.

ENTRY REQUIREMENTS

This is an open entry qualification which means no formal qualifications are required. You must be aged 16 or over and be physically able to complete the programme specific outcomes. Students may be required to comply with industry rules and regulations or those of a partner organisation.

Length	15-32 weeks part-time*	Start date	March
Fee	\$25 per credit	Campus	Hawke's Bay or Tairāwhiti

* Depending on strand

NZ Certificate in Commercial Road Transport (Specialist Driver) [Level 4]

(Subject to approval and accreditation)

With this qualification you'll be eligible for a wide range of employment opportunities in any industry where vehicles are driven and in areas where a range of licence classes are required, such as the transport and logging industry, pack houses, couriers and bus driving. This qualification gives you the skills and knowledge to safely and competently operate rigid vehicles or heavy vehicle combinations to ensure the safe and efficient movement of freight within specific industry sectors.

ENTRY REQUIREMENTS

This is an open entry qualification which means no formal qualifications are required. You must be aged 16 or over and be physically able to complete the programme specific outcomes. Must hold a current Full Class 1 Licence for a minimum of six months and hold a medical certificate no older than 60 days for the level of licence required.

Length	20 weeks full-time	Start date	August
Fee	Please see website for details	Campus	Tairāwhiti

HORTICULTURE

Grow a great career in horticulture and choose from a huge range of qualifications. Learn all about soil types, plant science, propagation, pest and disease management, landscaping, irrigation and harvesting. Understand horticultural technology, resource management and agribusiness. You'll have access to EIT's horticulture laboratories, greenhouses, propagation facilities and garden plots.

YOUR CAREER OPPORTUNITIES

Horticulture industries worldwide are looking for well-trained staff, and EIT's qualifications and graduates are well recognised throughout the sector. You can choose from a range of horticulture qualifications from pre-employment to programmes that will advance your current employment. You could work in an orchard, garden centre or a nursery in roles ranging from pruner to production supervisor

To find out more check out horticulture.eit.ac.nz

NZ Certificate in Primary Industry Skills (Horticulture) [Level 2]

FEE FREE

This is a practical programme of study that covers the entry level skills needed to gain employment in the growing horticulture industry with an emphasis on health and safety in the workplace. You can choose to either study, general horticulture or fruit production. As a graduate of this programme you can pathway into the variety of level 3 programmes on offer.

ENTRY REQUIREMENTS

This is an open entry qualification which means no formal qualifications are required. You must be aged 16 or over and be physically able to complete the programme specific outcomes.

Length	12 weeks full-time	Start date	Various start dates throughout the year - see website for details
Fee	Fee FREE	Campus	Hawke's Bay, Tairāwhiti or EIT Regional Learning Centres

* Part-time study available

NZ Certificate in Agriculture [Level 3] (Vehicles, Machinery and Infrastructure)

FEE FREE

Opportunities exist within many primary industry sectors for qualified operators of machinery and agri-vehicles. This qualification will give you the skills to operate and maintain a range of vehicles and machinery that are specific to the horticultural workplace. It also covers the practical skills required to build and maintain infrastructure within this industry.

ENTRY REQUIREMENTS

NCEA Level 1, or literacy and numeracy abilities equivalent to NCEA Level 1 with either a qualification at Level 1 or evidence of relevant knowledge and experience. An interview may be part of the application process.

Length	13 weeks full-time	Start date	Various start dates throughout year
Fee	Fee FREE	Campus	Hawke's Bay, Tairāwhiti or EIT Regional Learning Centres

* Part-time study available

NZ Certificate in Land Based Sustainability Practices [Level 3]

FEE FREE

This programme offers an introduction to the concepts and principles of sustainable land management. It is aimed at learners who would like to sustainably develop and maintain their own or community land. Learners will increase their awareness of sustainable management practices that can be applied to many of the horticultural sectors.

ENTRY REQUIREMENTS

NCEA Level 1, or literacy and numeracy abilities equivalent to NCEA Level 1 with either a qualification at Level 1 or evidence of relevant knowledge and experience. An interview may be part of the application process.

Length	12 weeks full-time	Start date	Various start dates throughout year
Fee	Fee FREE	Campus	Hawke's Bay, Tairāwhiti or EIT Regional Learning Centres

NZ Certificate in Horticulture (General) [Level 3]

FEE FREE

If you enjoy working outdoors then this is the qualification for you. It is a mix of theory and hands on practical training that teaches the core horticultural subjects of plant science and naming, pest and disease, gardening skills and soils. This programme will give you an excellent skill base for personal use, further study at a higher level or in specialist fields.

ENTRY REQUIREMENTS

NCEA Level 1, or literacy and numeracy abilities equivalent to NCEA Level 1 with either a qualification at Level 1 or evidence of relevant knowledge and experience. An interview may be part of the application process.

Length	20 weeks full-time	Start date	Various start dates throughout year
Fee	Fee FREE	Campus	Hawke's Bay, Tairāwhiti or EIT Regional Learning Centres

NZ Certificate in Horticulture (Fruit Production) [Level 3]

This is a full time programme that will give you the practical skills and knowledge needed to gain employment in the fruit production industry. You will learn about pruning, thinning and crop health, alongside using orchard machinery and block development. There is a strong focus on effectively communicating within a team and health and safety practices within the workplace.

ENTRY REQUIREMENTS

NCEA Level 1, or literacy and numeracy abilities equivalent to NCEA Level 1 with either a qualification at Level 1 or evidence of relevant knowledge and experience. An interview may be part of the application process.

Length	20 weeks full-time*	Start date	July
Fee	\$1446** (approx)	Campus	Tairāwhiti or Hastings Regional Learning Centres

* Part-time study available ** Includes course related costs

Mahinga Kai – Te Hoata [Kaupae 3] | NZ Certificate in Maori Traditional Food Production, Harvest and Management [Kaupae 3]

FEE FREE

Focus on traditional māori tikanga that can be passed onto your tamariki and mokopuna by completing this introductory qualification. This programme provides the opportunity to engage with your whānau, hapū, iwi and communities by sharing the whakaaro nui gained. Grow both the theoretical and operational understanding of mahinga kai that will enhance your connection with te whenua.

ENTRY REQUIREMENTS

NCEA Level 1, or literacy and numeracy abilities equivalent to NCEA Level 1 with either a qualification at Level 1 or evidence of relevant knowledge and experience. An interview may be part of the application process.

Length	20 weeks full-time*	Start date	February and July
Fee	Fee FREE	Campus	Tairāwhiti, Ruatoria or Wairoa Regional Learning Centres

* Part-time study available

NZ Certificate in Sustainable Primary Production [Level 4]

People who complete this qualification will be able to develop their own or community land in a sustainable manner. You will be able to evaluate, plan, implement and monitor sustainable practices as they are applied to the land. The programme is aimed at those who already have some qualifications or experience in the horticulture sector whom are looking to build on this knowledge.

ENTRY REQUIREMENTS

NCEA Level 2, or literacy and numeracy abilities equivalent to NCEA Level 1 with either a qualification at Level 2 or evidence of relevant knowledge and experience. An interview may be part of the application process.

Length	22 weeks full-time	Start date	February and July
Fee	\$1871* (approx)	Campus	Hawke's Bay, Tairāwhiti or EIT Regional Learning Centres

* Includes course related costs

Horticulture Trainee Programme [Level 2-4]

This programme offers you stimulating studies and provides a pathway to further your career in many aspects of horticulture, and particularly in fruit production. Our qualifications are designed around industry requirements that as a graduate will see you seamlessly transfer your skills and knowledge into your current employment and provide career pathways for progression in the industry.

On completion of the programme you will achieved the following qualifications:

- New Zealand Certificate in Primary Industry Skills (Level 2)
- New Zealand Certificate in Agriculture (Vehicles, Machinery and Infrastructure) (Level 3)
- New Zealand Certificate in Horticulture (Fruit Production) (Level 3)
- New Zealand Certificate in Horticulture Production (Fruit Production) (Level 4)

ENTRY REQUIREMENTS

Each qualification has its own entry requirements, please talk with the Programme Coordinator regarding these. Being in current employment is not an entry requirement, but students must be committed to be employed within the fruit production industry for the duration of the programme.

An interview may be part of the application process.

Length	3 years part-time	Start date	Various start dates throughout the year - see website for details
Fee	\$2446* (approx)	Campus	Hawke's Bay or Tairāwhiti

* Includes course related costs

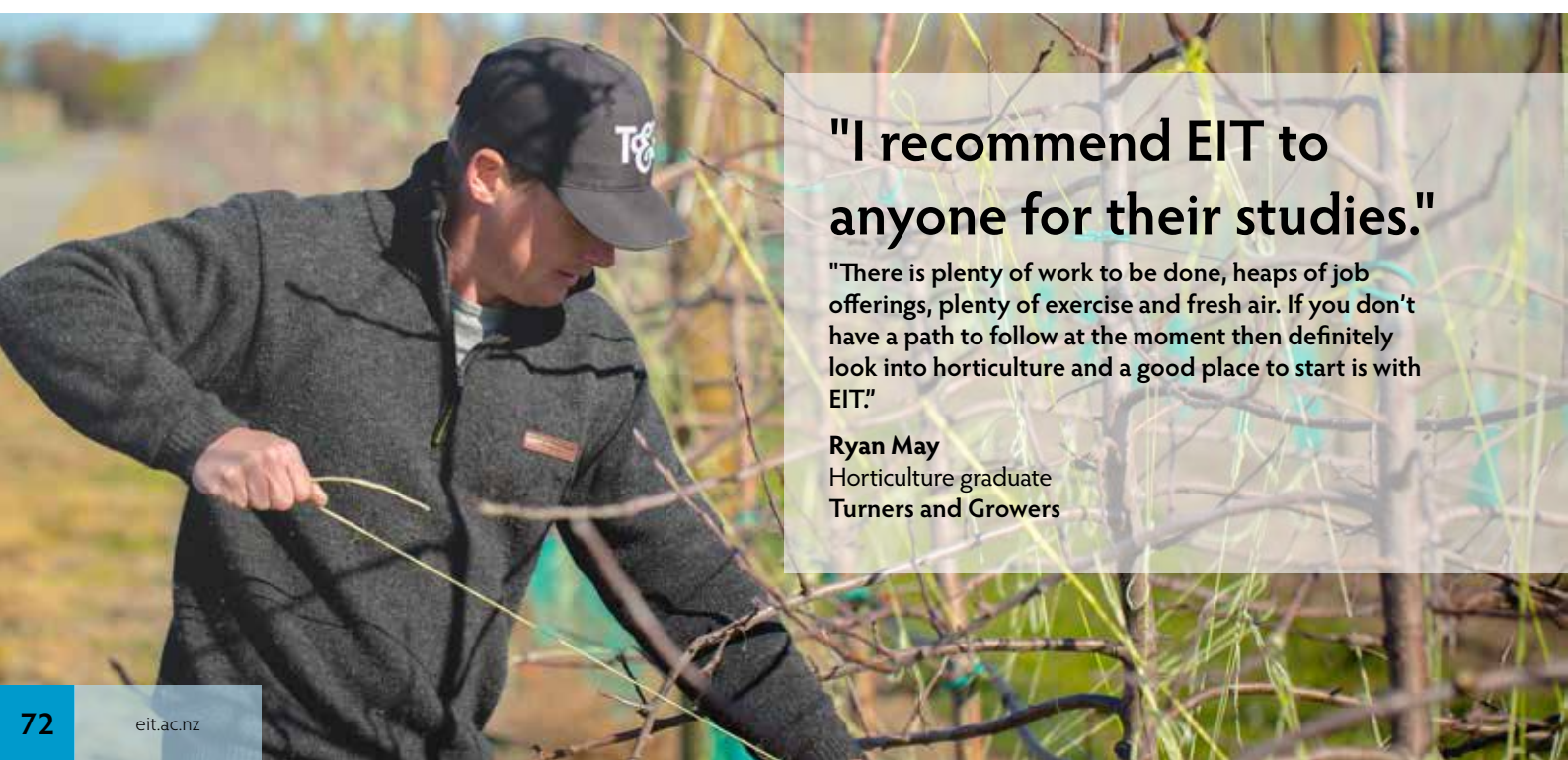
NZ Diploma in Horticulture Production [Level 5]

Become a specialist in the horticulture production sector by maximising effectiveness and productivity through this standard qualification. This programme focuses on the development of technical skills and knowledge, including leadership and team management skills, to enable efficient administration and supervision of horticulture production operations.

ENTRY REQUIREMENTS

NCEA Level 2, or successful completion of a Level 3 certificate, preferably in the primary industries subject area. For applicants 20 years or older without any of the above academic criteria, evidence of relevant knowledge and experience, and the ability to undertake tertiary study at Diploma level is required. In this case the applicant will be required to participate in an enrolment interview with the purpose of verifying the evidence.

Length	2 years part-time	Start date	Various start dates throughout year
Fee	Please see website for details	Campus	Hawke's Bay or Tairāwhiti



"I recommend EIT to anyone for their studies."

"There is plenty of work to be done, heaps of job offerings, plenty of exercise and fresh air. If you don't have a path to follow at the moment then definitely look into horticulture and a good place to start is with EIT"

Ryan May
Horticulture graduate
Turners and Growers

TEACHING & SOCIAL WORK



**"I found the course at EIT
to be fantastic."**

"The combination of theory and school based learning was invaluable to learning how to stand in front of a class."

Hamish Wedd

Bachelor of Teaching (Primary) graduate
Peterhead School

TEACHING

Learn to become a great teacher. EIT teacher education perfectly balances theory, research and practice. As you study, you'll work alongside experienced teachers in local early childhood centres and primary schools as part of the programme. Teaching is a rewarding career, and EIT's quality education programmes will help you develop your knowledge and skills for teaching.

YOUR CAREER OPPORTUNITIES

When you complete your early childhood education or primary teaching degree at EIT you can apply for registration with the Education Council of Aotearoa New Zealand (EDUCANZ) as a provisionally certified teacher. Choose to be an early childhood or primary teacher today.

To find out more check out teaching.eit.ac.nz

NZ Certificate in Study and Career Preparation [Level 3]

(Subject to approval and accreditation).

This is the ideal introduction if you're interested in working in social services or education. This certificate will help you get to grips with important concepts and basic skills relevant to careers in social work, teaching and other caring professions. It prepares you for further study at Level 4.

ENTRY REQUIREMENTS

Please see website for details.

Length	17 weeks full-time*	Start date	February and July
Fee	\$2,131 (approx)	Campus	Hawke's Bay or Tairāwhiti (February start only)

* Part-time study available

NZ Certificate in Study and Career Preparation [Level 4]

(Subject to approval and accreditation).

This qualification will give you an introduction to important skills and ideas, so you're ready to step up to higher level study, including at degree level. You'll learn the study and communication skills you need in the context of your field of interest. The courses you choose will get you ready to apply for entry into a range of diploma and degree programmes in the fields of health, including nursing and mental health support, social work and teaching.

If you choose not to carry on with study, you will have some broad knowledge and skills to enhance your employment prospects.

ENTRY REQUIREMENTS

Please see website for details.

Length	19 weeks full-time*	Start date	February and July
Fee	\$2,595 (approx)	Campus	Hawke's Bay or Tairāwhiti (July start only)

* Part-time study available

Bachelor of Teaching (Early Childhood Education) [Level 7]

It's rewarding to help young New Zealander's take their first important steps in life. The early years of a child's life lay the foundations for their future. Learn how to care for and teach infants, toddlers and young children. This degree gives you the balance of two days per week academic learning on campus, one day for individual study, and two days teaching experience in a licenced early childhood setting. As a graduate you can apply for registration with the Education Council of Aotearoa New Zealand (EDUCANZ) and become a provisionally certificated teacher.

ENTRY REQUIREMENTS

The selection process for this programme includes interviews and literacy and numeracy assessments. You must have no criminal convictions which would preclude you from working with children. You must be aged over 17 by the start of the programme and have University Entrance (see website for details).

If you are over 20 years of age and don't have University Entrance, you need to satisfactorily prove that you have the potential to succeed in tertiary study and satisfy the selection panel that you possess all of the necessary qualities that make you capable of undertaking the programme of study, and demonstrate competence in literacy and numeracy by meeting internal selection requirements.

If English is not your first language, you must have an IELTS minimum score of 7.0 in all bands.

Length	3 years full-time field-based	Start date	February
Fee	\$6,275 (approx)	Campus	Hawke's Bay

Bachelor of Teaching (Primary) [Level 7]

Become a primary school teacher and inspire New Zealand children to learn, achieve and realise their potential. This degree works in close partnership with local primary schools to provide you with a balance of professional teaching practice, educational theory and self-directed learning. Candidate Teachers attend campus classes two per days a week, participate in a school two days per week and enjoy one day per week for independent learning. You'll gain a rich understanding of the New Zealand Curriculum and considerable experience working with learners in schools. When you graduate you'll be able to apply for registration with the Education Council of Aotearoa New Zealand (EDUCANZ) as a provisionally registered teacher.

ENTRY REQUIREMENTS

The selection process for this programme includes interviews and literacy and numeracy assessments. You must have no criminal convictions which would preclude you from working with children. You must be aged over 17 by the start of the programme and have University Entrance (see website for details).

If you are over 20 years of age and don't have University Entrance, you need to satisfactorily prove that you have the potential to succeed in tertiary study and satisfy the selection panel that you possess all of the necessary qualities that make you capable of undertaking the programme of study, and demonstrate competence in literacy and numeracy by meeting internal selection requirements.

If English is not your first language, you must have an IELTS minimum score of 7.0 in all bands.

Length	3 years full-time field-based	Start date	February
Fee	\$5,391 per year (approx)	Campus	Hawke's Bay or Tairāwhiti



SOCIAL WORK

Gain a qualification that can help you make a difference in the lives of others. EIT gives you the opportunity to study social sciences from a foundation level right up to a degree qualification. Starting with an introduction to the core concepts of social services, you can go on to develop the academic skills needed to succeed in achieving a Bachelor of Social Work. Degree students enhance their study of theory and skills with placements in the community. Graduates of the Bachelor of Social Work are able to apply for provisional registration as a social worker.

YOUR CAREER OPPORTUNITIES

Social work is challenging and offers plenty of variety, and as a qualified social worker you'll be taking on a career that is rewarding and fulfilling.

To find out more check out socialwork.eit.ac.nz

NZ Certificate in Study and Career Preparation [Level 3]

(Subject to approval and accreditation).

This is the ideal introduction if you're interested in working in social services or education. This certificate will help you get to grips with important concepts and basic skills relevant to careers in social work, teaching and other caring professions. It prepares you for further study at Level 4.

ENTRY REQUIREMENTS

Please see website for details.

Length	17 weeks full-time*	Start date	February and July
Fee	\$2,131 (approx)	Campus	Hawke's Bay or Tairāwhiti (February start only)

* Part-time study available

NZ Certificate in Study and Career Preparation [Level 4]

(Subject to approval and accreditation).

This qualification will give you an introduction to important skills and ideas, so you're ready to step up to higher level study, including at degree level. You'll learn the study and communication skills you need in the context of your field of interest. The courses you choose will get you ready to apply for entry into a range of diploma and degree programmes in the fields of health, including nursing and mental health support, social work and teaching.

If you choose not to carry on with study, you will have some broad knowledge and skills to enhance your employment prospects.

ENTRY REQUIREMENTS

Please see website for details.

Length	19 weeks full-time*	Start date	February and July
Fee	\$2,595 (approx)	Campus	Hawke's Bay or Tairāwhiti (July start only)

* Part-time study available

Bachelor of Social Work [Level 8]

Make a difference in your community. With a degree in social work you will be ready to help empower individuals, families and whole communities to create positive change. Social workers are employed in areas of community development, health and education, child protection, family work, drug and alcohol, domestic violence, probation and reintegration, and more. You will develop the skills, knowledge and expertise to be a professional social worker here in Aotearoa New Zealand and beyond. As part of your training you'll be assigned to social work placements in agencies. You will also gain the skills to reflect on your own perceptions, actions, and processes, as well as the ability to justify and defend your professional practice. Upon graduating, you will be able to apply for provisional registration as a social worker.

If you receive high grades in your third year of study, you may complete the fourth year at a higher level and graduate with a Bachelor of Social Work (Honours).

ENTRY REQUIREMENTS

You must meet university entry requirements. If you do not meet the standard degree entry requirements and do not wish to complete a foundation programme, you may elect to sit a written test.

Once you meet entry requirements, you are then required to participate in an internal selection process. This process includes the provision of a CV, police record, confidential referee reports and an interview.

Approved foundation programmes include the NZ Certificate in Study and Career Preparation at Levels 3 and 4 and other approved programmes.

Length	4 years full-time*	Start date	February
Fee	\$730 per 15 credit course or \$5,962 per year (120 credits) (approx)	Campus	Hawke's Bay or Tairāwhiti - on campus and blended delivery

* Part-time study available

Te Tohu Tītohu mō Te Aka Whakaaroaro: Postgraduate Diploma in Professional Practice Te Tohu Paerua mō Te Aka Whakaaroaro: Master of Professional Practice [Level 8-9]

Are you looking for an opportunity to reflect on and develop your professional practice? These postgraduate programmes are for people whose primary work is with people: social workers, teachers, community/iwi development practitioners, counsellors, health practitioners and others working in fields where understanding customs, beliefs, values and language is essential.

Features of the programmes:

- Focus on your own practice developments and passions
- Critically reflect on your own practice strengths, weaknesses, challenges and areas for expansion
- Flexible delivery (block wānanga and online learning)
- Commitment to mātauranga Māori
- Collaborative interdisciplinary study with others whose practice is in socio-cultural fields.

ENTRY REQUIREMENTS

An undergraduate degree or level 7 graduate diploma in a socio-cultural field. Engagement in some form of socio-cultural practice is expected.

Length	Post-graduate 1 year full-time. Master 18 months full-time*	Start date	February
Fee	\$1960 per 30 credit course (approx)	Campus	Hawke's Bay - on campus and blended delivery

* Part-time study available

TOURISM & TRAVEL

A young woman with dark hair tied in a ponytail, wearing a white sleeveless lace top, is smiling and looking towards the camera. She is standing in front of a yellow aircraft, which has some text visible on its side, including "NO", "AN", and "E". The background is slightly blurred, focusing attention on the woman.

"The lecturers were amazing."

"They had stories from within the tourism industry that you don't normally get to hear."

The reason I wanted to study at EIT was because it was small enough to get to know everyone and taught me how to know what people are interested in – which is a big part of tourism.

EIT's not different to what I thought it would be, it's more than I thought it would be".

Hayley Paewhenua
Diploma in Tourism & Travel graduate
Nimon and Sons Ltd.

TOURISM & TRAVEL

By studying with EIT you can take a big step towards working in one of the world's biggest industries. If you love travel, think New Zealand is a great tourist destination, or want to help others see the world, study for a qualification that can really take you places.

YOUR CAREER OPPORTUNITIES

Graduates can gain employment in the exciting world of tourism in a variety of roles. These could be as a travel consultant, wholesale tour consultant, flight or cruise attendant, travel reservation staff, attractions guide, tour guide or airline ground staff.

To find out more check out tourism.eit.ac.nz

NZ Certificate in Tourism [Level 3]

Graduates will understand the visitor experience, the exciting world of tourism and travel, and be ready for an entry level position or further study. During the programme you will get an insight into why Hawke's Bay and New Zealand are amazing destinations, gain customer service and selling skills, and learn to apply tourism workplace practices. Includes City & Guild Certificate in International Tourism.

ENTRY REQUIREMENTS

A minimum of NCEA Level 1 or any qualification at Level 1 or above from the New Zealand Qualifications Framework, or special admission for applicants aged over 20. If English is not your first language, you need an IELTS score of 5 Academic with no band score lower than 5, or the New Zealand Certificate in English Language [Level 3] with an endorsement of either General, Workplace or Academic.

Length	19 weeks full-time	Start date	February
Fee	\$3,864 (approx)	Campus	Hawke's Bay

NZ Certificate in Tourism [Level 4]

This qualification will give you the skills to deliver quality visitor experiences, apply in-depth knowledge of New Zealand tourism destinations, understand workplace operations, manage first aid, and be able to have some responsibility for the performance of others. Includes City & Guild Diploma in International Tourism.

ENTRY REQUIREMENTS

A minimum of NCEA Level 2 or any qualification at Level 2 or above from the New Zealand Qualifications Framework, or special admission for applicants aged over 20. If English is not your first language, you need an IELTS score of 5 Academic with no band score lower than 5, or the New Zealand Certificate in English Language [Level 3] with an endorsement of either General, Workplace or Academic.

Length	19 weeks full-time	Start date	July
Fee	\$3,349 (approx)	Campus	Hawke's Bay

NZ Diploma in Tourism and Travel [Level 5]

This qualification will give you the skills to pro-actively support and enhance the visitor experience in senior positions in a range of organisations in the tourism and travel industries. You will be able to effectively contribute to a tourism workplace upholding the importance of tourism and travel to the New Zealand economy.

ENTRY REQUIREMENTS

A minimum of NCEA Level 3 or any qualification at Level 3 or above from the New Zealand Qualifications Framework, or special admission for applicants aged over 20. If English is not your first language, you need an IELTS score of 5.5 Academic with no band score lower than 5, or the New Zealand Certificate in English Language [Level 4] with an Academic endorsement.

Length	41 weeks full-time	Start date	February
Fee	\$5,523 (approx)	Campus	Hawke's Bay

TRADES & TECHNOLOGY

A construction worker with a beard and long hair tied back, wearing a red hard hat with a headlamp and an orange high-visibility safety vest, is holding a red spirit level against a vertical metal beam. The background shows a construction site with concrete and metal structures.

**"I love my job. I love
Hawke's Bay."**

"You get to try everything at EIT. It's great. I would definitely recommend getting a trade or qualification because it is too hard without it these days."

Nate Krutz
Certificate in Engineering Trades graduate
Red Steele

TRADES & TECHNOLOGY

EIT's trades and technology qualifications are all about giving you plenty of hands-on practical experience, like constructing a building, wiring a house, or repairing vehicles for customers in a fully-equipped commercial workshop. You can study foundation programmes and try your hand at a range of trades, then go on to specialist training at EIT.

If you're already working as a tradesperson, you can get career development to help you take your next step up the ladder. You may be eligible for help with paying your fees through an EIT Youth Scholarship or Māori and Pasifika Trades Training scheme.

YOUR CAREER OPPORTUNITIES

Qualified, professional tradespeople are always in demand.

You could score a great career in architecture, carpentry, electrical engineering, automotive, plumbing and gasfitting or engineering, including machining, welding and fabrication.

To find out more check out trades.eit.ac.nz

NZ Certificate in Foundation Skills – Construction [Level 2]

FEE FREE

During this course you will complete construction projects such as decks, pergolas and non-consent buildings. This certificate prepares you for further study or for employment in the construction industry. You will also achieve NCEA Level 1 Literacy and Numeracy.

ENTRY REQUIREMENTS

This is an open entry programme which means no formal academic qualifications are required. You must be aged 16 or over. You need to be able to demonstrate a commitment to learning. An interview is part of the application process.

Length	19 weeks full-time	Start date	February and July
Fee	Fee FREE	Campus	Hawke's Bay or EIT Regional Learning Centres (Hastings, Napier, Dannevirke, Tairāwhiti, Tolaga Bay or Ruatoria)

NZ Certificate in Foundation Skills – Automotive and Engineering [Level 2]

FEE FREE

This programme is hands-on with some theory work included that will allow you to achieve NCEA Level 1 Literacy and Numeracy. During the practicals you will learn the skills that are needed to carry out real workplace tasks. This will prepare you for further studies in the automotive or engineering or will support your quest for a job with new skills.

ENTRY REQUIREMENTS

This is an open entry programme which means no formal academic qualifications are required. You must be aged 16 or over. You need to be able to demonstrate a commitment to learning. An interview is part of the application process.

Length	19 weeks full-time	Start date	February and July
Fee	Fee FREE	Campus	Hawke's Bay, Tairāwhiti (TBC), Ruatoria (TBC) or Wairoa

NZ Certificate in Construction Trade Skills (Carpentry) [Level 3]

If you are looking for a hands-on career in the building and construction industry this qualification will start you on the way. On completion you could be employed as an apprentice by a builder or building contractor to complete your carpentry qualification.

ENTRY REQUIREMENTS

You must have NCEA Level 1 literacy and numeracy, or provide evidence of achievement at an equivalent level. You need to have full physical mobility to meet the demands of OSH requirements and construction site work. An interview will be part of the application process. You may be required to sit a pre-entry test.

Length	39 weeks full-time	Start date	February and July (only Hawke's Bay)
Fee	\$6,312 (approx)	Campus	Hawke's Bay, Tairāwhiti*, Wairoa or CHB

* February start only

NZ Certificate in Carpentry [Level 4]

(Subject to approval and accreditation)

This programme guides you through your apprenticeship. It combines the best aspects of on-the-job training with night classes to ensure that you achieve the skills and qualifications desired by industry. An added advantage is you can earn while you learn.

ENTRY REQUIREMENTS

You can enter direct from the workforce with the recommendation of the builder who is to be your employer. You may have completed a carpentry pre-apprenticeship course, or you could have previously completed unit standards towards the New Zealand Certificate in Carpentry [Level 4] with another provider. An interview will be part of the application process. You may be asked to sit a pre-entry test. You need to have full physical mobility to meet the demands of construction site work.

Length	3-4 years full-time	Start date	Anytime
Fee	\$1,200 - 2,000 per year (approx)	Campus	Hawke's Bay or Tairāwhiti

NZ Certificate in Electrical Engineering Theory [Level 3]

You will spend time in electrical workshops completing projects and developing practical skills in preparation for an apprenticeship. Upon completion you will continue theory and practical training during an apprenticeship, leading on to become a registered electrician.

ENTRY REQUIREMENTS

NCEA Level 2 or above with Mathematics, English and Physics or General Science, or an alternative qualification at Level 2 or above with the same subjects, or evidence of relevant knowledge and experience.

Length	39 weeks full-time	Start date	February and July
Fee	\$5,540 (approx)	Campus	Hawke's Bay

NZ Certificate in Mechanical Engineering [Level 3]

(Subject to approval and accreditation)

This programme introduces you to the engineering trade which consists of welding, machining and fabrication disciplines. This programme pathways on to a range of apprenticeships within the engineering trade or onto further study at Level 4.

ENTRY REQUIREMENTS

You must have NCEA Level 1 literacy and numeracy, or provide evidence of an achievement at an equivalent level, or if you have achieved an appropriate level of knowledge as a result of previous work experience, you are welcome to apply. An interview is part of the application process. You may be required to sit a pre-entry test.

Length	40 weeks full-time	Start date	February and July
Fee	\$6,480 (approx)	Campus	Hawke's Bay or Tairāwhiti (February start only)



NZ Certificate in Plumbing, Gasfitting and Drainlaying [Level 3]

If you are looking for a hands-on career in the plumbing and gasfitting industry, this is the programme for you. Upon completion you could be employed as an apprentice and enrol in further study.

ENTRY REQUIREMENTS

You must meet the NCEA Level 1 literacy and numeracy requirements, or provide evidence of achievement at an equivalent level. An interview may be part of the application process. You are required to have the physical mobility needed to meet the demands of construction site work. You may be required to sit a pre-entry test.

Length	24 weeks full-time	Start date	February
Fee	\$6,480 (approx)	Campus	Hawke's Bay

NZ Certificate in Automotive Engineering [Level 3]

(Subject to approval and accreditation)

If you have a passion for cars and motors, this hands-on, pre-employment programme will be valuable in gaining skills required for entry into a range of fields in the industry. You could find yourself working on trucks, cars, motorcycles or heavy machinery. Whichever you choose, motor mechanics are always in high demand.

ENTRY REQUIREMENTS

You must meet the NCEA Level 1 literacy and numeracy requirements, or provide evidence of achievement at an equivalent level, or completed the NZ Certificate in Foundation Skills or successfully completed the alternative academic entry test which measures your literacy and numeracy ability. An interview is part of the application process.

Length	40 weeks full-time	Start date	February and July
Fee	\$6,353 per year (approx)	Campus	Hawke's Bay or Tairāwhiti (February start only)

NZ Diploma in Architectural Technology [Level 6]

This programme will offer you stimulating studies and provide a pathway to your professional qualification as an architectural technician. Gain the knowledge, skills and attitudes required to become a productive member of an architectural design team – undertake practical learning to learn the whole process of producing architectural drawings, from establishing a client's requirements right through to submission of the final designs.

ENTRY REQUIREMENTS

A minimum of NCEA Level 2, a foundation or bridging programme, or for applicants over 20 years old evidence of relevant prior learning and experience.

Length	2 years full-time	Start date	February
Fee	\$6,606 per year (approx)	Campus	Hawke's Bay

VETERINARY NURSING

A photograph of two veterinary nurses in blue scrubs attending to a Siamese cat. The nurse in the foreground is focused on the cat's paw, while the second nurse in the background looks on with a smile. The cat is lying on a white surface, and a pair of yellow-handled scissors is visible in the bottom right corner.

ANIMAL MANAGEMENT & VETERINARY NURSING

Would you like to work with all creatures great and small? Here's your chance to learn about this exciting world: from animal husbandry to anatomy and first aid. Plus, you will be responsible for the animal residents of EIT's brand-new Veterinary Centre. You'll get the skills to assist veterinarians and use professional equipment.

YOUR CAREER OPPORTUNITIES

You could work with animals in a veterinary practice, laboratory, animal hospital or wildlife park.
You could also go on to earn a qualification in veterinary nursing, technology or science.

To find out more check out vetnursing.eit.ac.nz

NZ Certificate in Animal Management (Companion Animals Strand) [Level 4]

Get the skills required to work in the animal care and handling industry through hands-on practicals and work experience placements. You'll be able to demonstrate knowledge of animal anatomy and physiology, animal husbandry, recognise the signs of ill-health, and apply first aid to small animals.

ENTRY REQUIREMENTS

You need NCEA Level 1 and 36 NCEA credits at Level 2 including 12 credits in English and 12 credits of a relevant science or have achieved the NZ Certificate in Animal Care [Level 3], or if aged over 20 provide evidence of ability to study at Level 4. You must be willing to work with all animals, plus dissect and handle animal body parts and fluids.

Length	41 weeks full-time	Start date	February
Fee	\$6,986 (approx)	Campus	Hawke's Bay

NZ Certificate in Animal Technology (Veterinary Nursing Assistant Strand) [Level 5]

This programme will enable you to provide assistance to a veterinary team, maintain health and husbandry of animals, care for hospitalised patients, contribute in surgery preparation and anaesthesia plus assist with diagnostic procedures.

ENTRY REQUIREMENTS

You must have NCEA Level 2 including a minimum of 12 NCEA credits in English at Level 2 and a minimum of 12 NCEA credits in Maths at Level 1, plus a minimum of 12 credits of relevant Science at Level 1 or have a relevant animal care qualification or meet alternative entry criteria.

If English is not your first language, you need an IELTS score of 6.0 Academic in all bands or higher.

Length	41 weeks full-time	Start date	February
Fee	\$6,810 (approx)	Campus	Hawke's Bay

NZ Diploma in Veterinary Nursing [Level 6]

You will become an essential part of a veterinary team, clinic or hospital. Through this programme you will learn to provide surgical and medical veterinary nursing, manage services and perform diagnostic sampling and medical imaging. A mix of face-to-face and online delivery of courses is offered to enable you to work and study at the same time.

ENTRY REQUIREMENTS

You must hold the New Zealand Certificate in Animal Technology with Veterinary Nursing Assistant Strand [Level 5] or the National Certificate in Veterinary Nursing [Level 5] or equivalent.

If English is not your first language, you need an IELTS score of 6.0 Academic in all bands or higher.

Length	41 weeks full-time	Start date	February
Fee	\$7,118 (approx)	Campus	Hawke's Bay

VITICULTURE & WINE SCIENCE



"I would recommend EIT to anyone in New Zealand and around the world."

"Four years to gain two degrees. A short time-frame for such quality and skills learnt which will set you up for a career in either winemaking or viticulture."

Jascha Oldham-Selak

Bachelor of Wine Science and Bachelor of Viticulture
(Concurrent) student



VITICULTURE & WINE SCIENCE

Here's your chance to study viticulture and wine science in the heart of New Zealand's premium wine regions. You can choose from the widest range of grapegrowing and winemaking programmes in New Zealand. You'll learn from highly qualified and experienced lecturers. You'll gain invaluable experience at Hawke's Bays superb teaching and research winery, and wine sensory laboratory, or through the outstanding Waimata Wine label and vineyard, a 1.6 hectare commercially run winery at Tairāwhiti.

YOUR CAREER OPPORTUNITIES

EIT's strong connections with the local wine industry means you'll be in an excellent position to find employment once you graduate. Plus our programmes have an excellent global reputation, so you may also be able to work in some of the world's great wine regions.

To find out more check out wine.eit.ac.nz and waimata.eit.ac.nz

NZ Certificate in Applied Science [Level 3]

(Subject to approval and accreditation)

This programme is designed to provide you with introductory science knowledge and skills. This includes the practical application of science to entry level tasks commonly found in science, technology and engineering related workplaces. You will be able to continue on to further study in science and applied science or gain entry level employment in a range of science and technology related jobs.

ENTRY REQUIREMENTS

Achieved NCEA Level 1 or equivalent qualification or be able to demonstrate the ability to undertake this study.

Length	17 weeks full-time	Start date	July
Fee	\$2,997 (approx)	Campus	Hawke's Bay

* Part-time study available

New Zealand Certificate in Horticulture (Fruit Production) [Level 3]

In this programme you can specialise in grapegrowing for work in the exciting wine industry.

You will gain a wide range of practical grapegrowing skills that equip you to work in vineyards and is ideal if you want practical, hands-on outdoor work. You could also continue on to further study. One option is to gain skills in both grapegrowing and winemaking by completing the NZ Certificate in Cellar Operations [Level 3].

ENTRY REQUIREMENTS

Achieved NCEA Level 1 or equivalent qualification or evidence of relevant knowledge and experience including literacy and numeracy abilities equivalent to NCEA Level 1.

Length	18 weeks full-time	Start date	July
Fee	See website for details	Campus	Hawke's Bay



New Zealand Certificate in Cellar Operations [Level 3]

As an apprentice, you will be employed full-time in the industry, studying towards your national certificates. Study includes on-job assessments, block courses and EIT tutorials. You will gain a well rounded understanding of the wider industry and the skills required for the viticulture industry. The delivery of this programme is designed to avoid peak industry periods.

ENTRY REQUIREMENTS

You need to be employed in the horticultural/viticulture industry. An interview may be part of the process.

Length	3 years part-time	Start date	February and various times throughout the year
Fee	\$784 per year (approx)	Campus	Hawke's Bay

Bachelor of Viticulture [Level 7]

This programme has a strong emphasis on the science, techniques and management aspects of viticulture. You will gain expertise in husbandry, technical, scientific and managerial skills in grapegrowing. Highly skilled lecturers offer applied learning in conjunction with the local wine industry and research facilities.

ENTRY REQUIREMENTS

You must meet university entry requirements (see website for details), and a good understanding of chemistry and physics is essential. You must be aged over 18 on the 1st of February of the year you apply for entry to this programme. If you are aged under 18, you may be provisionally accepted into the programme but restricted in which courses you are enrolled in until you turn 18 years of age.

Length	17 weeks full-time	Start date	February
Fee	\$5,996 per year or \$749 per 15 credit course and \$1498 per 30 credit course (approx)	Campus	Hawke's Bay or online with an on-campus component in Hawke's Bay.

Bachelor of Wine Science [Level 7]

Study the science of winemaking (oenology) in New Zealand's premium wine region. It covers specialist technical, scientific and managerial skills in winemaking. You will gain hands-on experience using our purpose-built winery and laboratory facilities.

ENTRY REQUIREMENTS

You must meet university entry requirements (see website for details), and a good understanding of chemistry and physics is essential. You must be aged over 18 on the 1st of February of the year you apply for entry to this programme. If you are aged under 18, you may be provisionally accepted into the programme but restricted in which courses you are enrolled in until you turn 18 years of age.

Length	3 years full-time*	Start date	February and July
Fee	\$5,996 per year or \$749 per 15 credit course and \$1498 per 30 credit course (approx)	Campus	Hawke's Bay or online with an on-campus component in Hawke's Bay.

* Part-time study available

Bachelor of Viticulture or Bachelor of Wine Science (by distance) [Level 7]

These degrees may also be studied by distance learning. They are offered as a part-time study option and students will be required to attend compulsory residential schools in Hawke's Bay each year.

ENTRY REQUIREMENTS

Academic entry requirements are the same as for the on-campus offering of the degrees with the additional requirement that you must have internet access for online learning and access to the grapegrowing and winemaking industry for selected courses.

Length	6 years part-time	Start date	February and July
Fee	\$5,996 per year or \$725 per 15 credit course and \$1449 per 30 credit course (approx)	Campus	Online with an on-campus component in Hawke's Bay.

Bachelor of Viticulture and Bachelor of Wine Science (Concurrent) [Level 7]

This is a unique opportunity for you to study two degrees simultaneously. Obtain specialised viticulture and wine science knowledge which includes grapegrowing, winemaking, science and management subjects. It has a strong emphasis on the sciences, technical and management aspects of both grapegrowing and winemaking.

ENTRY REQUIREMENTS

You must meet university entry requirements (see website for details), and a good understanding of chemistry and physics is essential. You must be aged over 18 on the 1st of February of the year you apply for entry to this programme. If you are aged under 18, you may be provisionally accepted into the programme but restricted in which courses you are enrolled in until you turn 18 years of age.

Length	4 years full-time*	Start date	February and July
Fee	\$5,996 per year or \$749 per 15 credit course and \$1498 per 30 credit course (approx)	Campus	Hawke's Bay

* Part-time study available

Graduate Diploma in Oenology or Graduate Diploma in Viticulture [Level 7]

If you have a science degree, these graduate diplomas will allow you to fast track into a viticulture or oenology (wine science) specialisation. They are particularly suitable if you are working in the winegrowing industry and wish to increase and deepen your skills and knowledge to further your career. The programmes emphasise the specific scientific, technical and managerial aspects of grapegrowing and winemaking, and are the only distance online graduate diplomas in viticulture and oenology available in New Zealand.

ENTRY REQUIREMENTS

You need to have completed a three year degree or equivalent qualification, or be able to demonstrate significant in-depth work and professional experience in science or the wine industry.

Length	1 year full-time*	Start date	February and July (part-time only)
Fee	\$750 per course (approx)	Campus	Hawke's Bay or online with an on-campus component in Hawke's Bay

* Part-time study available

Graduate Diploma in Business (Wine Industry) [Level 7]

The Graduate Diploma in Business enables those who have completed a bachelor's degree to achieve a degree level qualification in business or in a specialised area of business. Endorsements include management, information systems, accounting, entrepreneurship plus an unendorsed option. The wine industry endorsement will particularly suit those involved in the wine industry who are seeking to enhance their career opportunities, or those seeking to add wine industry related skills to an existing business qualification.

ENTRY REQUIREMENTS

You need a degree or equivalent qualification, or work in business and can demonstrate evidence of significant work and professional experience at degree level or above. You will be required to participate in an interview. Graduates from non-business disciplines may require preparatory study before enrolment.

Length	1 year full-time*	Start date	February, March and July
Fee	\$5,264 (approx) depending on course selection	Campus	Hawke's Bay or Auckland

* Part-time study available



Nick Picone (left)
Bachelor of Wine Science
Chief Winemaker at Villa Maria

Ollie Powrie (right)
Bachelor of Viticulture graduate
Company Viticulturist at Villa Maria



Alex Roper | 2016 Hawke's Bay Young Winemaker of the Year
Bachelor of Wine Science graduate
Assistant Winemaker Mission Estate

ENROLMENT INFORMATION

HOW TO ENROL

STEP 1

Check out our website, enrol online, or request a printed application pack.

Both our website and application packs include detailed programme information, entry requirements, and an enrolment form.

0800 22 55 348 | www.eit.ac.nz | info@eit.ac.nz

Complete and return the enrolment form and all required supporting documents.

Apply to StudyLink if applicable, even if you haven't been accepted on to your programme yet. Visit www.studylink.govt.nz.

STEP 2

You may be contacted and invited to an interview.

You will receive an acceptance letter with programme information including your start date. It may also include course selection forms. You need to complete and return them.

STEP 3

You will receive an invoice with payment details.

Arrangements for full payment of enrolment fees must be made before the start of your programme.

STUDENT SERVICES LEVY

The Student Services Levy is a compulsory non-tuition fee that is charged to students enrolled at EIT. The levy is to contribute to the provision of quality student services that support learning. The funds received by EIT from the levy are ring-fenced, meaning they can only be spent on student services.

STUDENT LOANS AND ALLOWANCES

StudyLink is a service of the Ministry of Social Development. Apply well before your programme begins (even if you haven't been accepted yet) so you'll be ready to get your payments when you need them most. Check out studylink.govt.nz or phone 0800 88 99 00. A Student Allowance is a weekly payment to help you with living expenses. It doesn't have to be paid back. A Student Loan is made up of three parts – compulsory fees, course-related costs and living costs. You have to pay these back.

Photo credit: Jeff Brass from Think Photography

